

**LANGLADE COUNTY U.S. PUBLIC LAND  
SURVEY MONUMENT LOCATION RECORD**

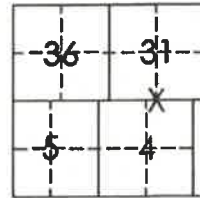
Corner Location: South Quarter Corner of Section 31  
 Monument Type: Found 0.75" Rebar  
 County Coordinate: N 260,345.03 E 336,661.93  
 Date of Survey: 5/28/2019 Datum: WSCRS Marathon NAD 83 (2011)  
 Survey Party: John Jursa  
 Field Book: Looseleaf Hewitt Page Number: Z3

Found   
 Set   
 Re-set   
 Re-Tied

Section 31  
 Township 31N  
 Range 9E

Z3

Ackley  
~~City, Village, Town~~  
4310931 0020  
 Section



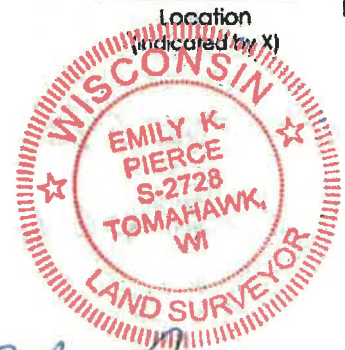
**BASIS FOR MONUMENT LOCATION:**

(Describe method of survey and corner authentication)

1851 - James Marsh set original corner and four bearing trees.

11/98 - 11/02, 1/05/2005 - D. Trusty did not recover any evidence of original corner location. Set 0.75" x 30" Rebar to monument corner location by single proportion between SW and SE corners of Section 31-31-9. Set four ties to corner location.

5/28/2019 - Visited corner location and found 0.75" Rebar and three remaining ties in good condition. Accepted corner location and ties, and set one new tie and measured as shown below.

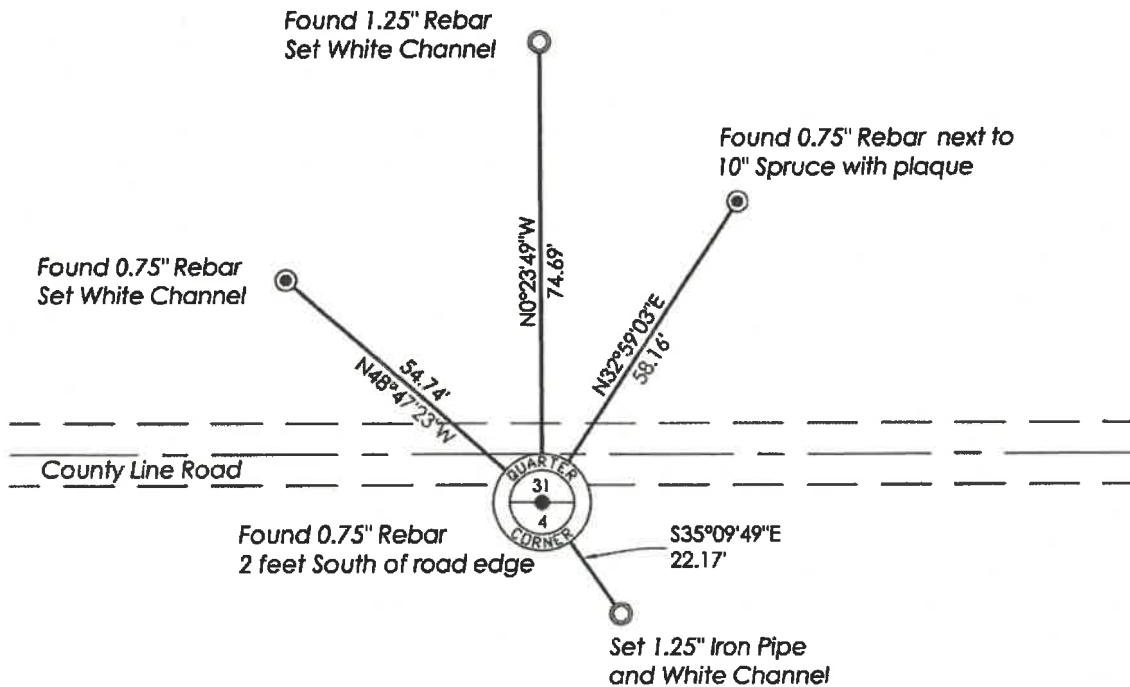


*Emily K. Pierce*

Emily K. Pierce, RLS-2728

Date: 5/28/2019

**TIE SKETCH:** Show minimum of four (4) horizontal tie distances to fixed witness monuments. Describe all monuments found or set.



Z3