

LANGLADE COUNTY U.S. PUBLIC LAND CORNER RESTORATION

The South Quarter corner of Section 31, T. 31 N., R. 9 E., Langlade County, WI.

Corner was: (check all that apply)

43109310020

- Restored through acceptance of an obliterated evidence location.
- Restored through acceptance of a found perpetuated location.
- Determined to be lost and re-established through proportionate methods.
 - Show bearings and distances to PLSS corners used for proportioning, and show original distances).
 - Restored/recovered/re-established in a location that differs from a previously established position.
- (Show difference in plan view below).
- Check here if additional information is shown on the reverse side of this form.

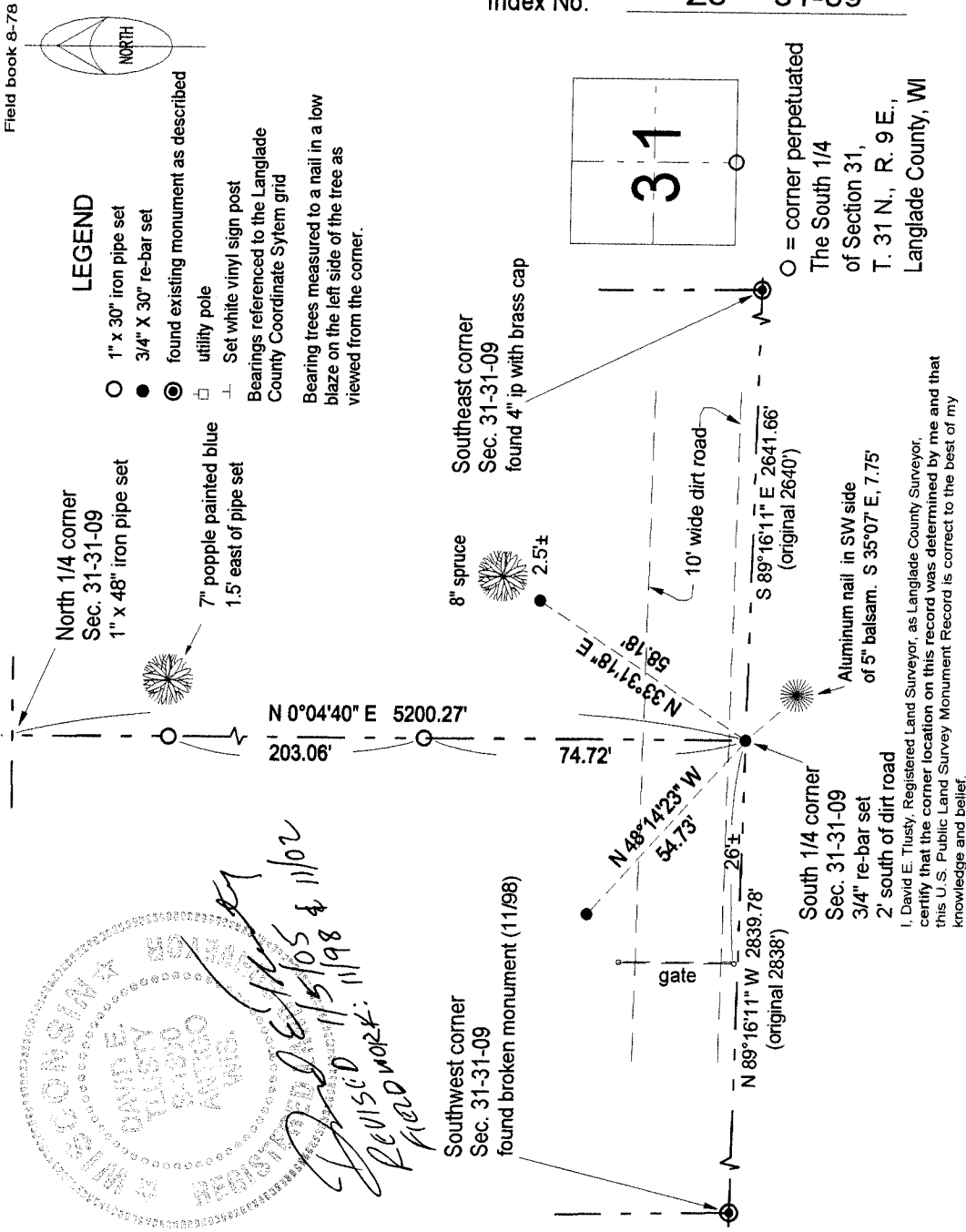
Describe record evidence, recovered physical evidence, occupational evidence, testimonial evidence and all other evidence considered in the recovery/restoration of the corner.

The original corner was established in 1851 by James M. Marsh. Original bearing trees: elm, 8", N80°E, 27 links; a tamarac, 11", N60°E, 32 links; a hemlock, 16", N10°W, 34 links and a birch, 10", N35°W, 12 links. There are no other records on file pertaining to this corner. I established this corner by single proportionate measurement between the Southeast and Southwest corners of Section 31. The total distance between those corners works very close to the original government survey distances. (see dimensions on sketch below)

Physical description of the monument set:

Set a 3/4" x 30" re-bar for the corner, approx. 2 feet off the south edge of an existing dirt road.

Describe the accessories used to perpetuate the corner. Include a plan view drawing and accessories found/set. Describe measuring point on bearing trees. Show any topographic features that would aid in future recovery of the corner.



Index No. Z3 31-09



David E. Tlusty
 REVISID 11/5/05 & 11/02
 FIELD MARK: 11/98

I, David E. Tlusty, Registered Land Surveyor, as Langlade County Surveyor, certify that the corner location on this record was determined by me and that this U.S. Public Land Survey Monument Record is correct to the best of my knowledge and belief.