

# LANGLADE COUNTY U.S. PUBLIC LAND CORNER RESTORATION

The Southeast corner of Section 31, T. 31 N., R. 9 E., Langlade County, WI.

**Corner was: (check all that apply)**

4 3109 310000

- Restored through acceptance of an obliterated evidence location.
- Restored through acceptance of a found perpetuated location.
- Determined to be lost and re-established through proportionate methods.
  - Show bearings and distances to PLSS corners used for proportioning, and show original distances).
  - Restored/recovered/re-established in a location that differs from a previously established position.
- (Show difference in plan view below).
- Check here if additional information is shown on the reverse side of this form.

**Describe record evidence, recovered physical evidence, occupational evidence, testimonial evidence and all other evidence considered in the recovery/restoration of the corner.**

The original corner was established in 1851 by James M. Marsh. Original bearing trees: elm, 8", N80°E, 27 links; tamarac, 11", N60°E, 32 links; hemlock, 14", N10°W, 34 links and a birch, 10", N35°W, 12 links. In 1906, Brooks, in a survey in Section 32, said "orig BT stumps standing". In 1937, D. A. Hintze, as part of a resurvey of the east half of T31N, R9E said "found cor. good" and set a 4" iron pipe with brass cap. 11/20/02 D. Tlusty, after tying into corners to the east and west, found the 4" iron pipe with brass cap. Pipe was frost heaved and lying on ground under a layer of leaves & brush. Re-set monument in old hole at base of pipe. Corner is in the south ditch of old east-west road. Distance to 1/4 corner to east works very well with Hintzes distance. Accepted monument found as the best evidence of the original corner location and tied it as shown below.

**Physical description of the monument set:**

Re-set the 4" iron pipe found, top is 7" above ground. Set white vinyl sign post just north of corner monument.

**Describe the accessories used to perpetuate the corner. Include a plan view drawing and accessories found/set. Describe measuring point on bearing trees. Show any topographic features that would aid in future recovery of the corner.**

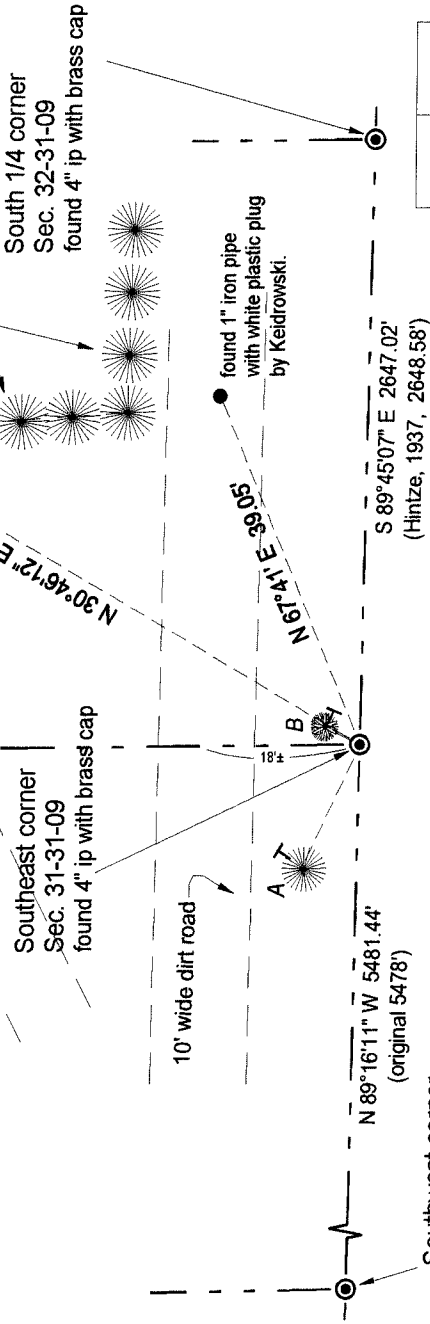
**LEGEND**

● found existing monument as described

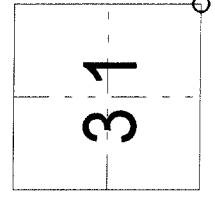
Bearings referenced to the Langlade County Coordinate System grid

Bearing trees measured to a nail in a low blaze on the right side of the tree as viewed from the corner.

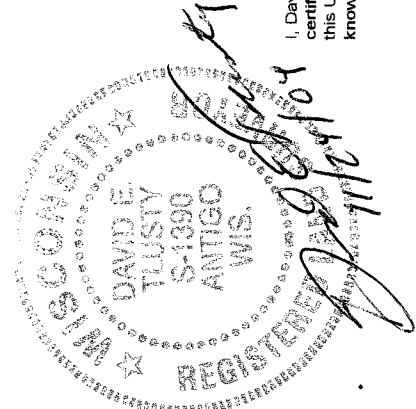
Field book 8-73



Bearing trees:  
A: spruce, 5", N 65°W, 13.26'  
B: blue beech, 3", N 26° E, 4.00'  
BT bearings are with hand compass.



○ = corner perpetuated  
The Southeast corner  
of Section 31,  
T. 31 N., R. 9 E.,  
Langlade County, WI



I, David E. Tlusty, Registered Land Surveyor, as Langlade County Surveyor, certify that the corner location on this record was determined by me and that this U.S. Public Land Survey Monument Record is correct to the best of my knowledge and belief.