

# LANGLADE COUNTY U.S. PUBLIC LAND CORNER RESTORATION

The East Quarter corner of Section 29, T. 31 N., R. 09 E., Langlade County, WI.

4310930 2000 2022

**Corner was: (check all that apply)**

- Restored through acceptance of an obliterated evidence location.
- Restored through acceptance of a found perpetuated location.
- Determined to be lost and re-established through proportionate methods.
- Show bearings and distances to PLSS corners used for proportioning, and show original distances).
- Restored/recovered/re-established in a location that differs from a previously established position.
- (Show difference in plan view below).
- Check here if additional information is shown on the reverse side of this form.

The original corner was established in 1860 by Hiram Fellows. He marked bearing trees: Hemlock, 6", N55E, 17 lks and Hemlock, 15", N72W, 20 links.

In 1907, Ed Brooks surveyed within Section 29. He ran West (from E1/4 of Sec. 29) 78.55 ch. (5184.3') and recorded "1.48 S of 1/4 P." but didn't describe the quarter corner. He also measured the N-S 1/4 line as 77.35 ch. (5105.1'), with the center of section being 40.05 ch (2645.3') north of the S1/4 corner.

April 2022. As Brooks did not measure the West line of Section 29, I resorted to recreating the quarter corner by proportioning his distances in Section 29, described as follows. I measured the N-S quarter line as 5098.2'; 6.9' shorter than Brooks. I then assumed that he measured the E-W quarter line under the same conditions so I shortened his E-W quarter line distance by 6.9 feet. To control the direction from the East 1/4 of Sec. 29, I computed a center of section location by shortening Brooks' distance by 3.45 feet (half of his 1 mile comparison) from the S1/4 corner to the center of section. See sketch below.

**Physical description of the monument set:**

I set a 1" x 60" iron pipe, marked by a iron channel post with "Survey Marker" signs, 0.8' north.  
Corner falls in wet and unstable swamp no trees. No reference ties set; see coordinates.

**Describe the accessories used to perpetuate the corner. Include a plan view drawing and accessories found/set. Describe measuring point on bearing trees. Show any topographic features that would aid in future recovery of the corner.**

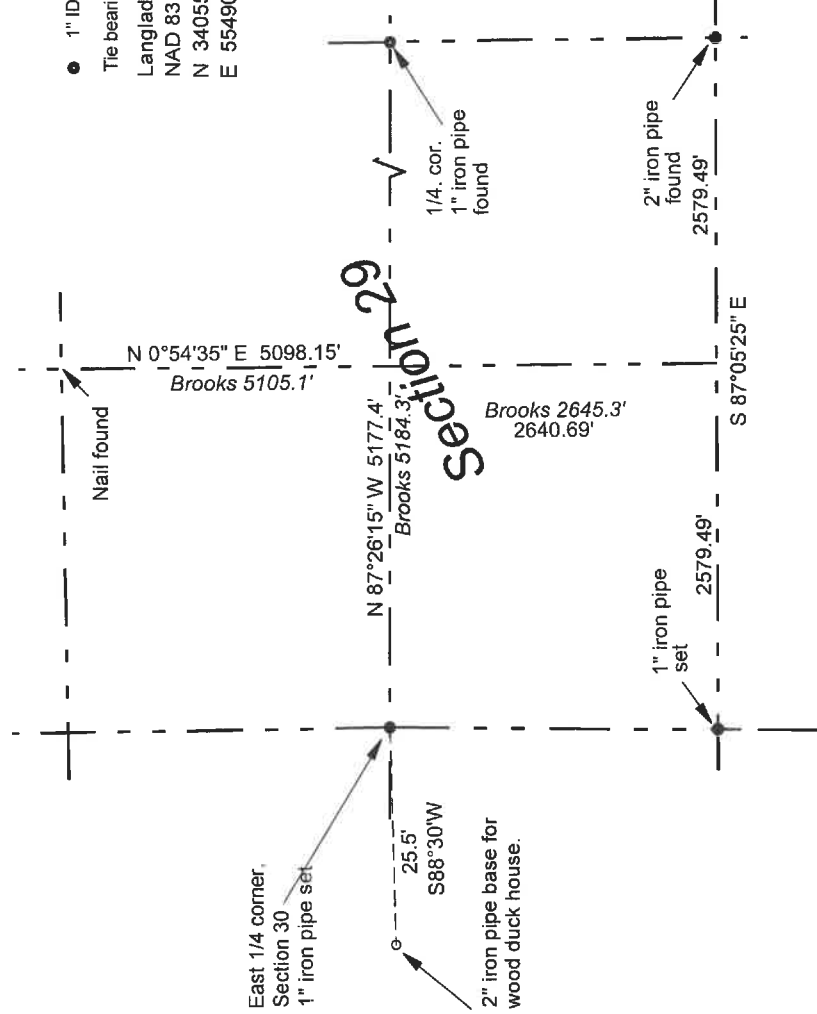


**LEGEND**

- 1" ID x 60" iron pipe set

The bearing shown is county grid.

Langlade County Coordinate system values  
NAD 83 (2021) datum  
N 340555.85  
E 554900.23



O = corner perpetuated

The East Quarter corner of Section 30, T. 31 N., R. 09 E., Langlade County, WI

I, David E. Tlusty, Wisconsin Professional Land Surveyor S-1390, do hereby certify that the corner location and perpetuation shown on this record was made by me and that this U.S. Public Land Survey Monument Record as required by AE-8 of the Wisconsin Administrative Code is correct to the best of my knowledge and belief.

75 31-09