

LANGLADE COUNTY  
U.S. PUBLIC LAND CORNER RESTORATION

The East 1/4 corner of Section 29, T. 31 N., R. 09 E., Langlade County, WI.

4310929 2000

**Corner was: (check all that apply)**

- Restored through acceptance of an obliterated evidence location.
- Restored through acceptance of a found perpetuated location.
- Determined to be lost and re-established through proportionate methods.
- Show bearings and distances to PLSS corners used for proportioning, and show original distances).
- Restored/recovered/re-established in a location that differs from a previously established position.
- (Show difference in plan view below).
- Check here if additional information is shown on the reverse side of this form.

**Describe record evidence, recovered physical evidence, occupational evidence, testimonial evidence and all other evidence considered in the recovery/restoration of the corner.**

The original corner was established in 1860 by Hiram Fellows. Original bearing trees: hemlock, 11", S73°W, 6 links and a hemlock, 12", S72°E, 8 links. In 1907, Brooks found the SW bearing tree standing, other gone. He ran the East line of Section 29 and reported 40.44 chains south and 39.82 chains north.

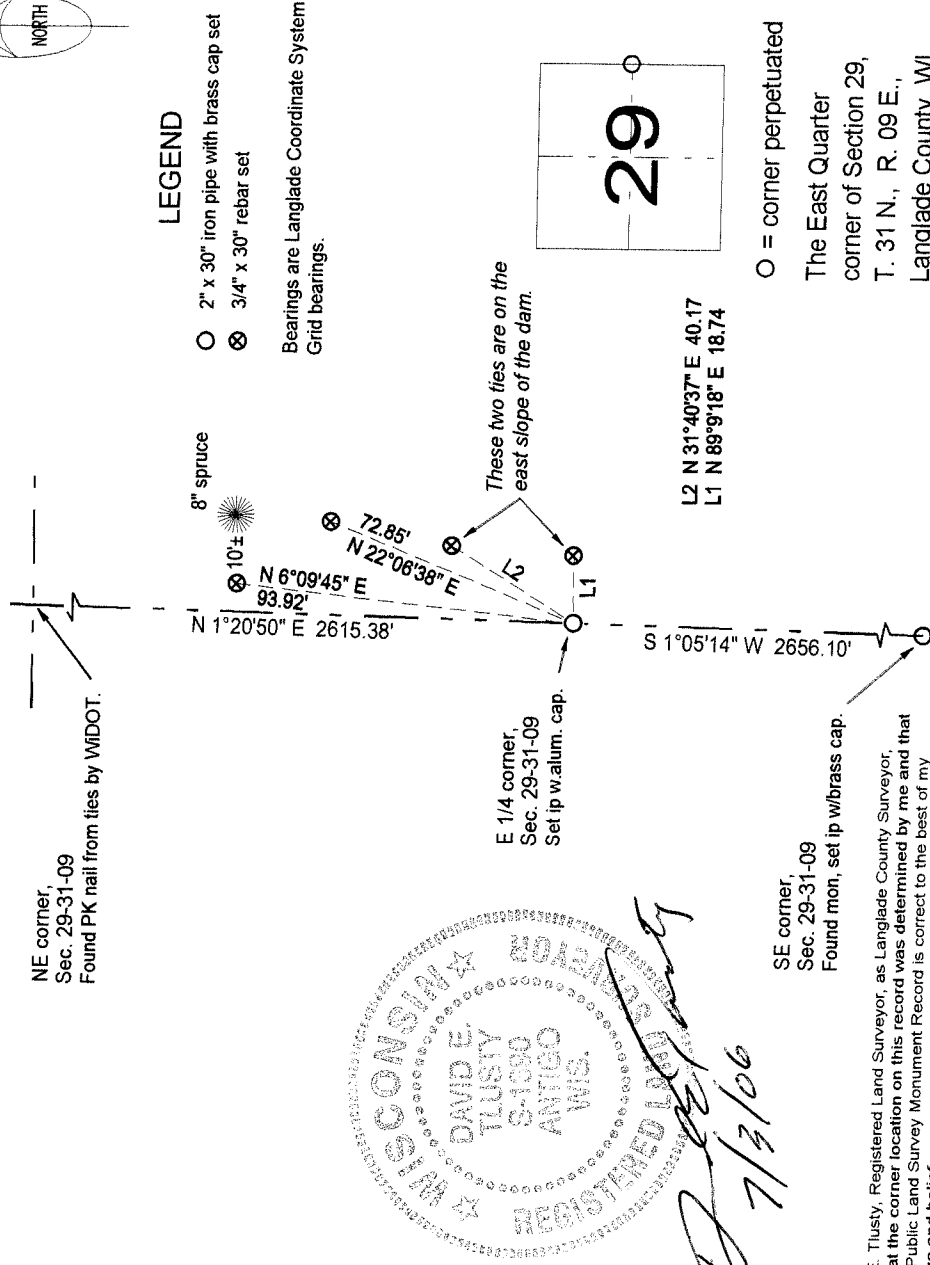
06/29/06 D. Tlusty. All corner evidence has been obliterated by the building of a dike. I re-established this corner by proportionate measurement north-south and in line with the North 1800' feet of road between Sec's. 28 & 29. Bakers 1927 atlas shows a road on the line between Sec's. 28 & 29. A considerable portion of the road has been re-built in the area of this quarter corner. The corner falls on the West edge of the west wheel rut of trail running N-S on the dike.

**Physical description of the monument set:**

I set a 1" (ID) x 30" iron pipe with aluminum cap, top of which is 0.5' below the road surface.

**Describe the accessories used to perpetuate the corner. Include a plan view drawing and accessories found/set. Describe measuring point on bearing trees. Show any topographic features that would aid in future recovery of the corner.**

Field book: FB8-90



Index No. T 9 31-09

O = corner perpetuated  
The East Quarter  
corner of Section 29,  
T. 31 N., R. 09 E.,  
Langlade County, WI

I, David E. Tlusty, Registered Land Surveyor, as Langlade County Surveyor, certify that the corner location on this record was determined by me and that this U.S. Public Land Survey Monument Record is correct to the best of my knowledge and belief.