

LANGLADE COUNTY U.S. PUBLIC LAND CORNER RESTORATION

The Southeast corner of Section 29, T. 31 N., R. 09 E., Langlade County, WI.

Corner was: (check all that apply)

- Restored through acceptance of an obliterated evidence location.
- Restored through acceptance of a found perpetuated location.
- Determined to be lost and re-established through proportionate methods.
- Show bearings and distances to PLSS corners used for proportioning, and show original distances).
- Restored/recovered/re-established in a location that differs from a previously established position.
- (Show difference in plan view below).
- Check here if additional information is shown on the reverse side of this form.

4310929 0000

Describe record evidence, recovered physical evidence, occupational evidence, testimonial evidence and all other evidence considered in the recovery/restoration of the corner.


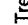
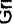
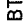
The original corner was established in 1860 by Hiram Fellows. Original bearing trees: birch, 9", N22°W, 17 links and a birch, 12", S65°E, 18 links. In June, 1906, Brooks, working in Sec. 32, for this corner said "Orig BT standing". In Sept. 1907, Brooks ran the line between Sec. 28 & 29. He had 40.44 ch. on South half and 39.82 on North half. In 1924, C.E. Baker measured south, between Secs. 28 & 29, 5277 feet to this corner and described it as: "Found Square post at cor. with point of older rotten post beside it. Stumps of both orig. B.T. correct for dist. & bng. but all marks gone. Joe Balada living on Sec 32 for 30 years says stk was set by Brooks many years ago and that the B.T. then bore the marks. Drove a well point." Baker also set 1/4 corner "at middle point". Baker obviously didn't have Brooks' notes. 06/07/06 D. Tlusty, Steve Jackson Found a 4" iron pipe with brass cap stamped to identify the corner and stamped "May 27, 1937". Removed this monument and also found the old well point. Based on the recovered well point described by Baker, I accept this position as the best evidence of the original corner location. I removed the old monument and set a new 2" x 30" brass capped, galvanized iron pipe (flush) to mark the corner. We have notes on re-survey work in the 1930's for the East half of this township, but no notes indicating that those surveyors were at this corner.

Physical description of the monument set:

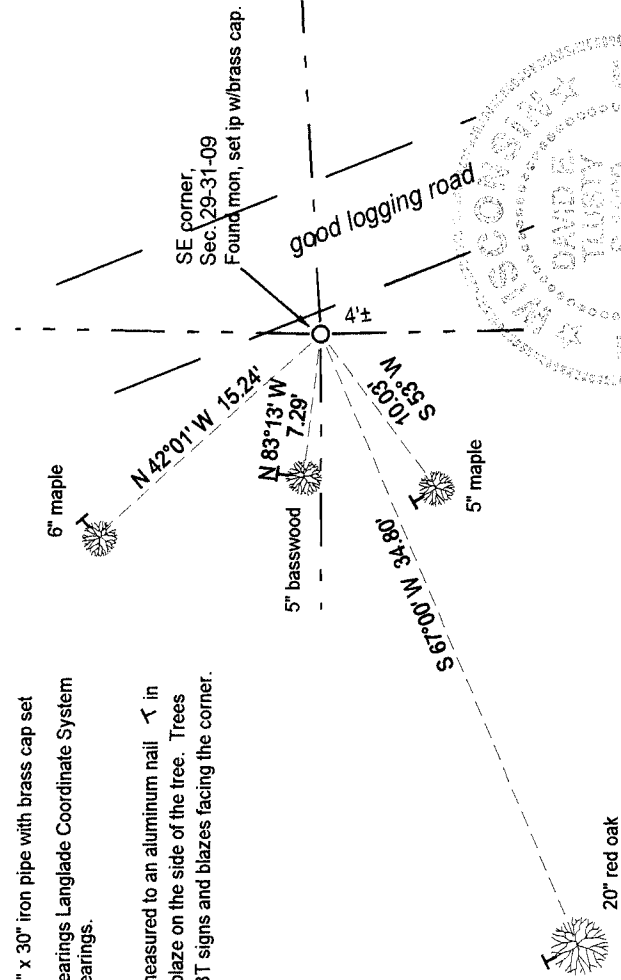
I removed the existing 4" iron pipe with brass cap and the existing well point and replaced them with a new 2" x 30" galvanized, flared bottom iron pipe with a 3 1/4" brass cap, top of which is flush with the ground. I set the old 4" monument on the ground and reset the well point alongside the new monument.

Describe the accessories used to perpetuate the corner. Include a plan view drawing and accessories found/set. Describe measuring point on bearing trees. Show any topographic features that would aid in future recovery of the corner.

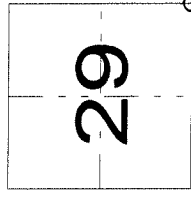
LEGEND

-  2" x 30" iron pipe with brass cap set
-  Tree bearings
-  Langlade Coordinate System
-  Grid bearings.

BT's measured to an aluminum nail in a low blaze on the side of the tree. Trees have BT signs and blazes facing the corner.



Index No. V 9 31-09



O = corner perpetuated
The Southeast corner of Section 29, T. 31 N., R. 09 E., Langlade County, WI



David E. Tlusty
9/13/06

I, David E. Tlusty, Registered Land Surveyor, as Langlade County Surveyor, certify that the corner location on this record was determined by me and that this U.S. Public Land Survey Monument Record is correct to the best of my knowledge and belief.

Field book: FB8-32

