

# LANGLADE COUNTY U.S. PUBLIC LAND SURVEY MONUMENT LOCATION RECORD

4310924 0020 2014

SECTION 25  
TOWNSHIP 31 N  
RANGE 9 E

R-23

NO.

LANDMARK       BENCHMARK  
CORNER IDENTITY: N1/4 CORNER SEC. 25 (BERNTSEN SNM-1 NAIL)  
FOUND  SET   
RESET  RE-TIED

LANGLADE COUNTY COORDINATE: N: 342134.915  
E: 578971.398

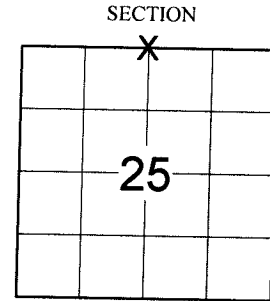
ELEVATION-(FEET): \_\_\_\_\_ DATUM: \_\_\_\_\_

WEATHER: PARTLY SUNNY

DATE OF SURVEY: 8/7/2014 TEMPERATURE: 74 °F

SURVEY PARTY: CHRIS FIERI & IAN FIELD

ACKLEY  
CITY, VILLAGE, TOWN



LOCATION  
(Indicated By X)

## BASIS FOR MONUMENT LOCATION:

(DESCRIBE METHOD OF SURVEY AND CORNER AUTHENTICATION)

1860 - Hiram Fellows established the original corner.

3/29/1990 - William Kelly S-1098 found a P.K. Nail over 3/4" iron rod at the corner location. Set out three (3) bearing trees and set a Langlade County witness monument to perpetuate the corner location.

5/11/1994 - Barrientos and Associates visited the corner location and show a P.K. Nail marking the corner on their tie sheet. Four (4) Berntsen 3" x 30" aluminum witness monuments were set to perpetuate the corner location.

8/7/2014 - I recovered a Gin Spike at the corner location and all four (4) witness monuments from the previous tie sheet. Also recovered the Langlade County Aluminum Monument heaved badly by frost. Plumbed the monument and reset. Returned after the re-surfacing of State Highway "64" and set a Berntsen SNM-1 Nail at the corner location.



CERTIFIED CORRECT:

*Christopher L. Fieri*

CHRISTOPHER L. FIERI S-2954

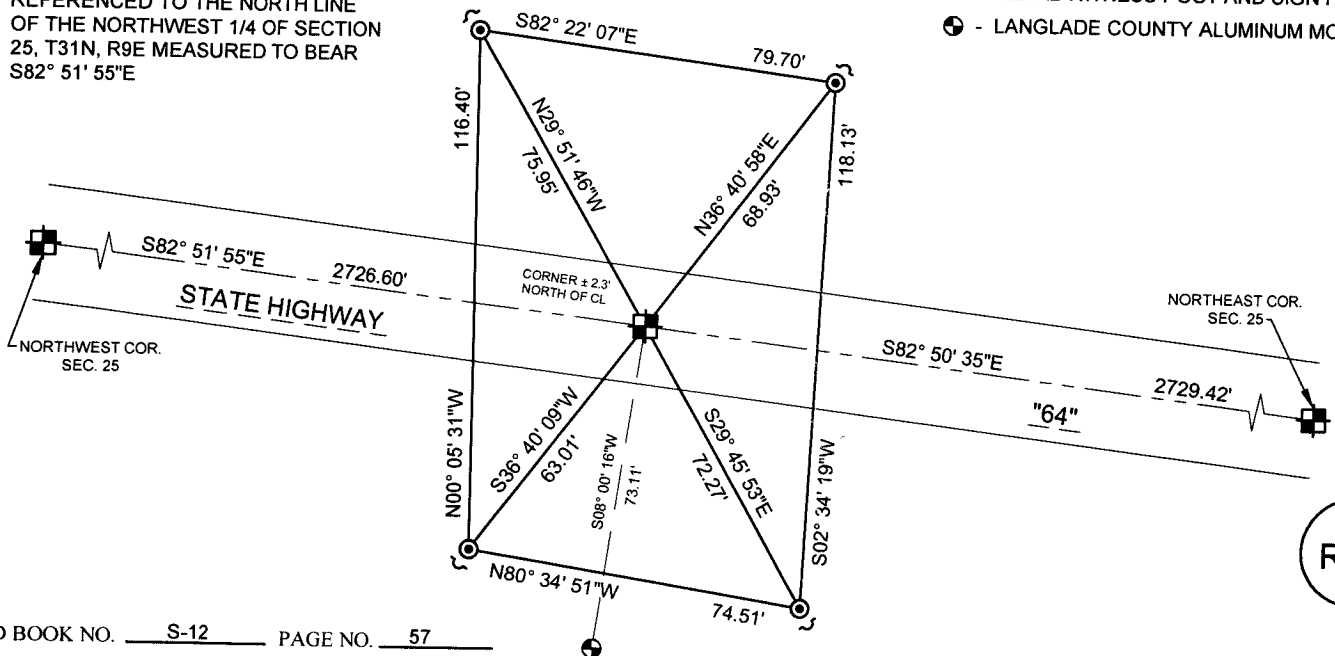
Registered Land Surveyor

DATE: 10-9-2014

## TIE SKETCH:

BEARINGS ARE BASED ON THE LANGLADE COUNTY COORDINATE SYSTEM NAD 83 (2011) AND REFERENCED TO THE NORTH LINE OF THE NORTHWEST 1/4 OF SECTION 25, T31N, R9E MEASURED TO BEAR S82° 51' 55"E

- ⊠ - BERNTSEN SNM-1 NAIL SET
- ⊙ - WISDOT ALUMINUM MONUMENT FOUND
- ∨ - METAL WITNESS POST AND SIGN FOUND
- ⊕ - LANGLADE COUNTY ALUMINUM MONUMENT



R-23

NO.

FIELD BOOK NO. S-12 PAGE NO. 57

COMPANY RIVERSIDE LAND SURVEYING LLC