

4 310924 0000 2014

LANGLADE COUNTY U.S. PUBLIC LAND SURVEY MONUMENT LOCATION RECORD

SECTION 24
TOWNSHIP 31 N
RANGE 9 E

R-25
NO.

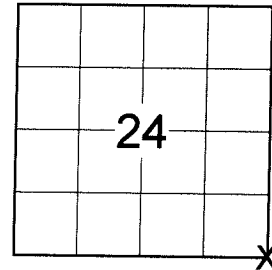
LANDMARK BENCHMARK

FOUND
SET
RESET
RE-TIED

CORNER IDENTITY: SE CORNER SEC. 24 (BERNTSEN SNM-1 NAIL)

ACKLEY
CITY, VILLAGE, TOWN

SECTION



LOCATION
(Indicated By X)



LANGLADE COUNTY COORDINATE: N: 341794.866

E: 581679.548

ELEVATION-(FEET): _____ DATUM: _____

WEATHER: PARTLY SUNNY

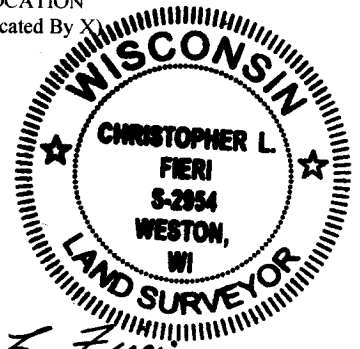
DATE OF SURVEY: 8/7/2014 TEMPERATURE: 74 °F

SURVEY PARTY: CHRIS FIERI & IAN FIELD

BASIS FOR MONUMENT LOCATION:

(DESCRIBE METHOD OF SURVEY AND CORNER AUTHENTICATION)

- 1859 - Hiram Fellows established the original corner.
- 1887 - B.F. Dorr ran West from this corner. At 77.64 ch he fell 7.10 ch South (FB 140-46)
- 1919 - Hutchinson ran West between sections 19 & 30 for a road survey for the state. "V 11° 15' at 80.50 int 243 S of cor. on range line". He did not describe the corner.
- 1930 - Hintz drove an iron peg 1/2" x 3" in the road during his resurvey. Brass Cap 30 feet South and another peg 30 feet North.
- 6/23/2006 - D. Tlusty found the top of the South brass capped witness monument.
- 4/20/2010 - D. Tlusty reset the 4" x 38" pipe with brass tablet that was found four years prior on the South side of Highway "64" so the top was 8" below the ground level. He re-established the section corner 30 feet North of the reset witness monument. Bearings and distances from the 1930 resurvey fit well with this position. Set a 6" gear headed spike at the corner and set witness monuments to perpetuate the corner.
- 8/7/2014 - I recovered the gear headed spike of record at the corner location. I also found and measured to three (3) witness monuments from the previous tie sheet. Set four (4) Bemtsen witness monuments and returned after re-surfacing of State Highway "64" to set a Bemtsen SNM-1 Nail at the corner location.



CERTIFIED CORRECT:

Christopher L. Fieri

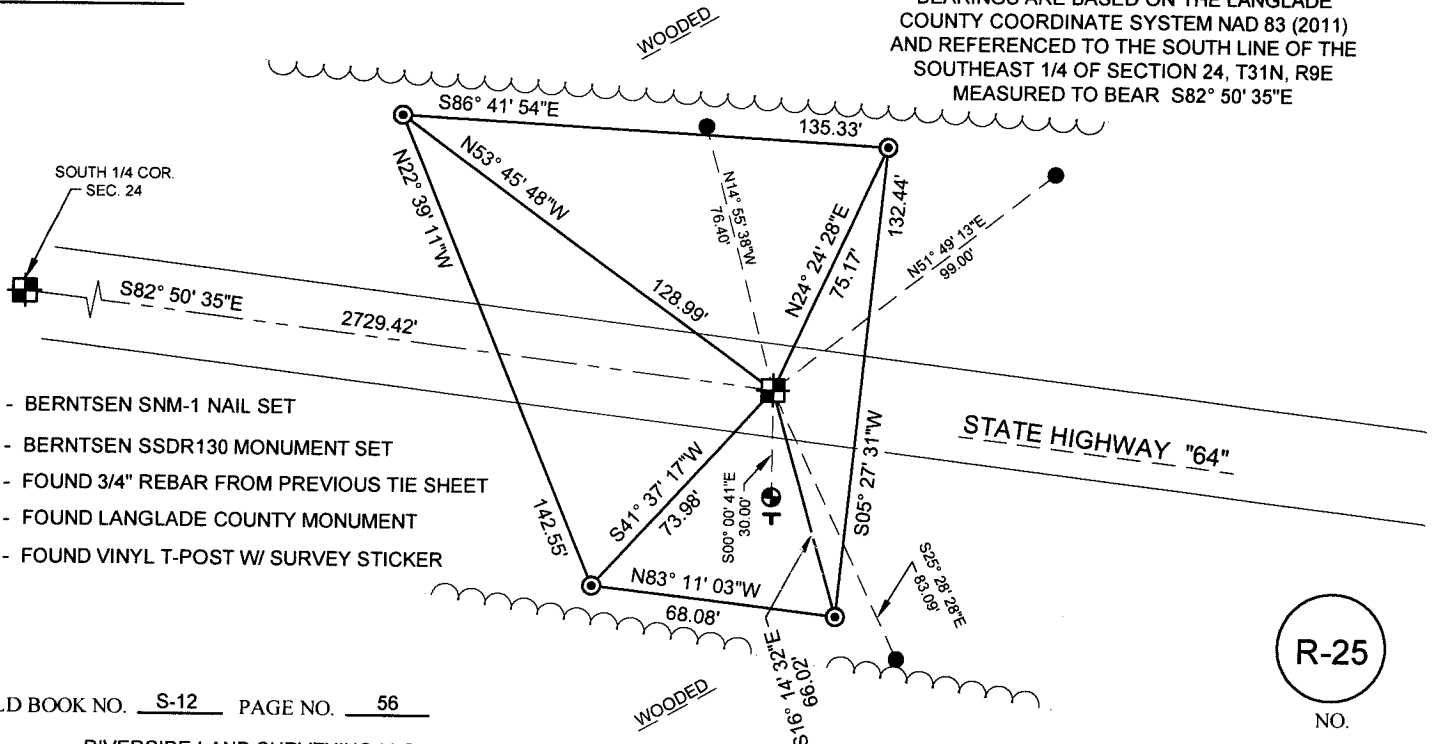
CHRISTOPHER L. FIERI S-2954

Registered Land Surveyor

DATE: 10-9-2014

TIE SKETCH:

BEARINGS ARE BASED ON THE LANGLADE COUNTY COORDINATE SYSTEM NAD 83 (2011) AND REFERENCED TO THE SOUTH LINE OF THE SOUTHEAST 1/4 OF SECTION 24, T31N, R9E MEASURED TO BEAR S82° 50' 35"E



R-25
NO.

FIELD BOOK NO. S-12 PAGE NO. 56

COMPANY RIVERSIDE LAND SURVEYING LLC