

LANGLADE COUNTY U.S. PUBLIC LAND SURVEY MONUMENT LOCATION RECORD

4310923 0020 2014

SECTION 26
TOWNSHIP 31 N
RANGE 9 E

R-19
NO.

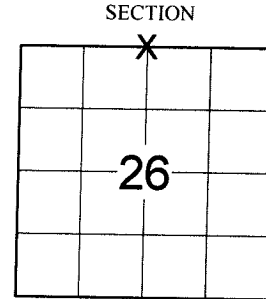
LANDMARK BENCHMARK _____

FOUND
SET
RESET
RE-TIED

CORNER IDENTITY: N1/4 CORNER SEC. 26 (BERNTSEN SNM-1 NAIL)

ACKLEY
CITY, VILLAGE, TOWN

LANGLADE COUNTY COORDINATE: N: 342647.955
E: 573547.747



ELEVATION-(FEET): _____ DATUM: _____

WEATHER: PARTLY SUNNY

DATE OF SURVEY: 8/7/2014 TEMPERATURE: 74 °F

SURVEY PARTY: CHRIS FIERI & IAN FIELD

LOCATION
(Indicated By X)



CERTIFIED CORRECT:

Christopher L. Fieri

CHRISTOPHER L. FIERI S-2954

Registered Land Surveyor

DATE: 10-9-2014

BASIS FOR MONUMENT LOCATION:

(DESCRIBE METHOD OF SURVEY AND CORNER AUTHENTICATION)

1937 - D.A. Hintz performed a resurvey of the E1/2 of Township 31 North Range 9 East.

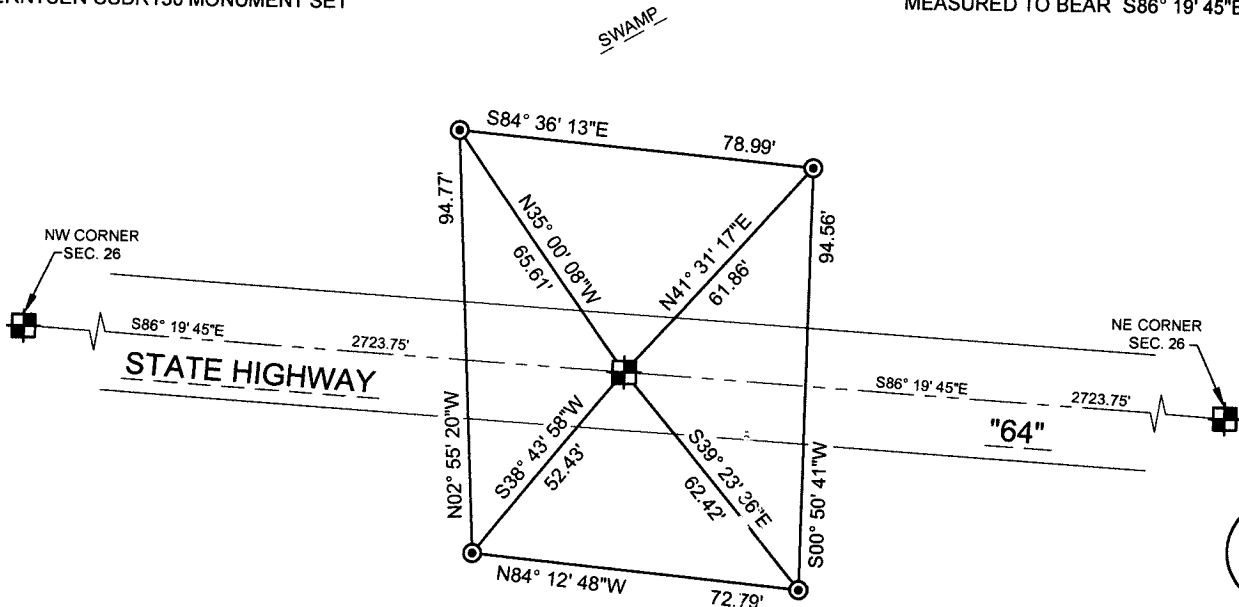
7/26/1969 - Raymond Hallisy S-685 recovered the Northeast and Northwest corners of Section 26. Measured the distance between these monuments to be 82 chains 54 links. Ran East to West setting the 40 corners and the quarter corner by single proportionate measurement. Also set witness corners North and South of the corners per his tie sheet.

8/7/2014 - I searched for evidence of Hallisy witness monuments and found none. As the witness monuments were set no more than 25' North or South of the corner it seems highly likely they were destroyed during widening of State Highway "64". Measuring between the Northwest and Northeast corners of this section, My distance fits very well with Hallisy's distance from 1969. I used single proportionate measurement to re-establish the corner. I set four (4) Berntsen witness monuments and returned after the resurfacing of Highway "64" to set a Berntsen SNM-1 Nail at the corner position.

TIE SKETCH:

- BERNTSEN SNM-1 NAIL SET
- BERNTSEN SDDR130 MONUMENT SET

BEARINGS ARE BASED ON THE LANGLADE COUNTY COORDINATE SYSTEM NAD 83 (2011) AND REFERENCED TO THE NORTH LINE OF THE NORTHWEST 1/4 OF SECTION 26, T31N, R9E MEASURED TO BEAR S86° 19' 45"E



R-19
NO.

FIELD BOOK NO. S-12 PAGE NO. 58

COMPANY RIVERSIDE LAND SURVEYING LLC