

CERTIFIED LAND CORNER RESTORATION

31-9

Index No. R-17  
-18  
-19  
-20

State of Wisconsin }  
County of Langlade } ss.

I, Raymond J. Hallisy, do hereby certify that on the 26th day of July, 19 69, I found evidence of the Section Line ~~corner~~ Between Sec. 23 & Sec. 26 Township 31, North, Range 9E, Fourth, Principal Meridian, as described hereon; and that from this evidence I established a new monument and accessories as described hereon to perpetuate the original location of this corner.

History of original corner establishment:

Resurvey of E 1/2 T31N R9E in 1937 by D. A. Hintz.

Description of corner evidence found:

NE Section corner and NW Section corner of Section 26 T31N R9E.

Ran transit line from NE Section corner to NW Section corner, distance of 82 chain 54 links.

Set WC corners for E1/16 at 20 chains 63.5 links; 1/4 at 41 chains 27 links; and W 1/16 at 61 chains 90.5 links.

Description of monument and accessories I established to perpetuate the original location of this corner.

E 1/16 - Two 1 1/4" pipes with brass caps; one 20 Feet South and one 20 Feet North.

1/4 - Two 4" cement with brass caps; one 25 Feet North and one 20 Feet South.

W 1/16 - Two 1 1/4" pipes with brass caps; one 25 Feet North and one 15 Feet South.

WC to NW Section Corner - Set 4" cement with brass cap; 60 Feet South of Corner.

~~XX~~ Section ~~XX~~ line runs down Hiway "64".

SEE OTHER SIDE

Dated at Antigo, Wis., this 26th day of July, 19 69

Signature Raymond J. Hallisy Title Reg. Land Surveyor Registration No. S-685  
(County Surveyor, Registered Land Surveyor, or other duly authorized official)

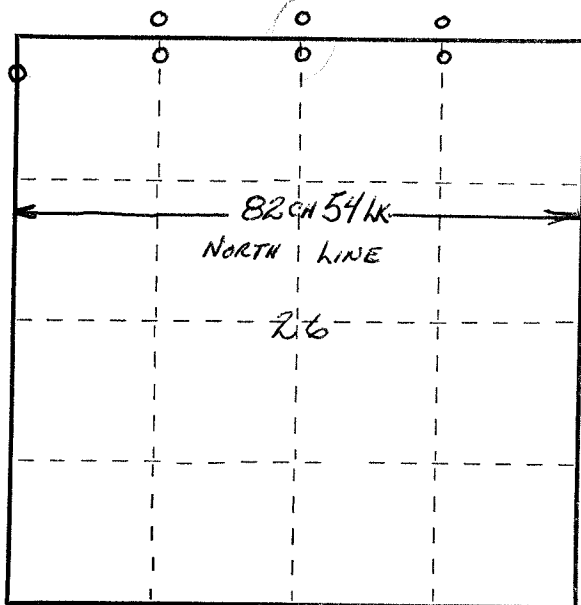
Office of Register of Deeds, County of \_\_\_\_\_, I hereby certify that the within instrument was filed in this office for record on the \_\_\_\_\_ day of \_\_\_\_\_, 19 \_\_\_\_\_ at \_\_\_\_\_ o'clock \_\_\_\_\_ M.

(Register of Deeds)

By \_\_\_\_\_ Deputy

FORM 985 H. C. MILLER CO., MILWAUKEE

43109230020



○ = Corner monument restored.

NORTH LINE SEC 26 T31N R9E. LINE RUN FROM NE. CORNER WEST  
TO N.W. CORNER

○ CORNER SET

