

4310923 0000 2014

LANGLADE COUNTY U.S. PUBLIC LAND SURVEY MONUMENT LOCATION RECORD

SECTION 26
TOWNSHIP 31 N
RANGE 9 E

R-21
NO.

LANDMARK BENCHMARK FOUND
CORNER IDENTITY: NE CORNER SEC. 26 (BERNTSEN SNM-1 NAIL) SET
RE-SET
RE-TIED

LANGLADE COUNTY COORDINATE: N: 342473.562
E: 576265.912

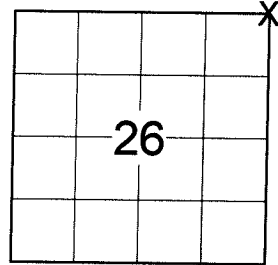
ELEVATION-(FEET): _____ DATUM: _____

WEATHER: PARTLY SUNNY

DATE OF SURVEY: 8/7/2014 TEMPERATURE: 74 °F

SURVEY PARTY: CHRIS FIERI & IAN FIELD

ACKLEY
CITY, VILLAGE, TOWN



LOCATION
(Indicated By X)



BASIS FOR MONUMENT LOCATION:

(DESCRIBE METHOD OF SURVEY AND CORNER AUTHENTICATION)
1860 - Hiram Fellows established the original corner.

3/29/1990 - William Kelly S-1098 recovered a P.K. Nail over a 3/4" iron bar at the corner location. He set out bearing trees and witness monuments to perpetuate the corner location.

5/11/1994 - Barrientos and Associates recovered a P.K. Nail at the corner location and set four (4) Berntsen aluminum witness monuments.

8/7/2014 - I visited this corner prior to road construction and recovered a Gin Spike at the corner location. I also recovered three (3) of the Berntsen aluminum monuments that checked well with record distances from the previous tie sheet. I set an additional Berntsen witness monument to the Northeast and returned after the re-surfacing of State Highway "64" to set a Berntsen SNM-1 Nail at the corner location.

FIELD BOOK NO. S-12 PAGE NO. 57

COMPANY RIVERSIDE LAND SURVEYING LLC



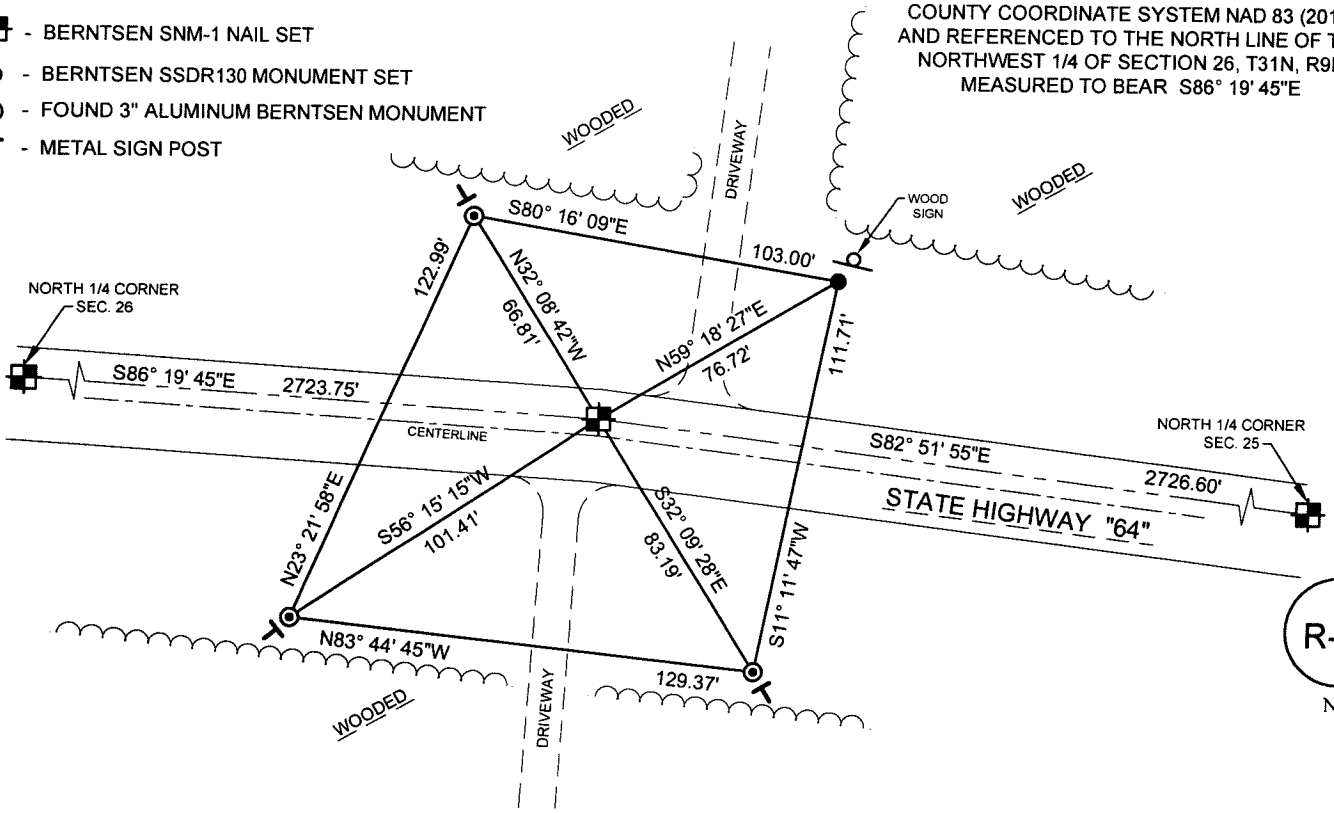
CERTIFIED CORRECT:

Christopher L. Fieri
CHRISTOPHER L. FIERI S-2954
Registered Land Surveyor
DATE: 10-9-2014

TIE SKETCH:

- BERNTSEN SNM-1 NAIL SET
- - BERNTSEN SDDR130 MONUMENT SET
- ⊙ - FOUND 3" ALUMINUM BERNTSEN MONUMENT
- T - METAL SIGN POST

BEARINGS ARE BASED ON THE LANGLADE COUNTY COORDINATE SYSTEM NAD 83 (2011) AND REFERENCED TO THE NORTH LINE OF THE NORTHWEST 1/4 OF SECTION 26, T31N, R9E MEASURED TO BEAR S86° 19' 45"E



R-21
NO.