

4310922 0000 2014

LANGLADE COUNTY U.S. PUBLIC LAND SURVEY MONUMENT LOCATION RECORD

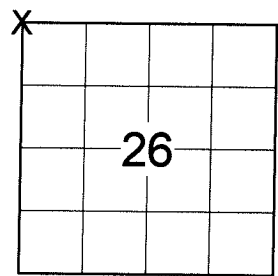
SECTION 26
TOWNSHIP 31 N
RANGE 9 E

R-17
NO.

LANDMARK BENCHMARK
CORNER IDENTITY: NW CORNER SEC. 26 (BERNTSEN SNM-1 NAIL) FOUND
RE-TIED SET
RESET

ACKLEY
CITY, VILLAGE, TOWN
SECTION

LANGLADE COUNTY COORDINATE: N: 342822.348
E: 570829.582



WEATHER: PARTLY SUNNY
DATE OF SURVEY: 8/11/2014 TEMPERATURE: 74 °F

SURVEY PARTY: CHRIS FIERI & IAN FIELD

BASIS FOR MONUMENT LOCATION:

(DESCRIBE METHOD OF SURVEY AND CORNER AUTHENTICATION)

- 1860 - Hiram Fellows set the original corner monument.
- 4/6/1985 - Raymond Hallisy S-685 reset the corner using a witness monument 60 feet South of the corner that was set in the 1930 resurvey.
- 3/6/1990 - William Kelly S-1098 recovered a 3/4" iron bar at the corner location and two (2) existing ties. He set a P.K. Nail over the found corner monument and set two (2) additional ties.
- 5/11/1994 - Barrientos and Associates recovered a P.K. Nail at the corner location and two existing ties to the South. Set four (4) Berntsen 3" x 30" aluminum monuments to perpetuate the corner location.

8/7/2014 - I visited this corner prior to road construction and recovered the shaft of a Berntsen Nail at the corner position. Also found three (3) of the Berntsen aluminum monuments from the previous tie sheet which checked well with record distances. Set an additional witness monument to the NW and returned after the re-surfacing of State Highway "64" and set a Berntsen SNM-1 Nail at the corner location.

LOCATION
(Indicated By X)



CERTIFIED CORRECT:

Christopher L. Fieri
CHRISTOPHER L. FIERI S-2954
Registered Land Surveyor
DATE: 10-9-2014

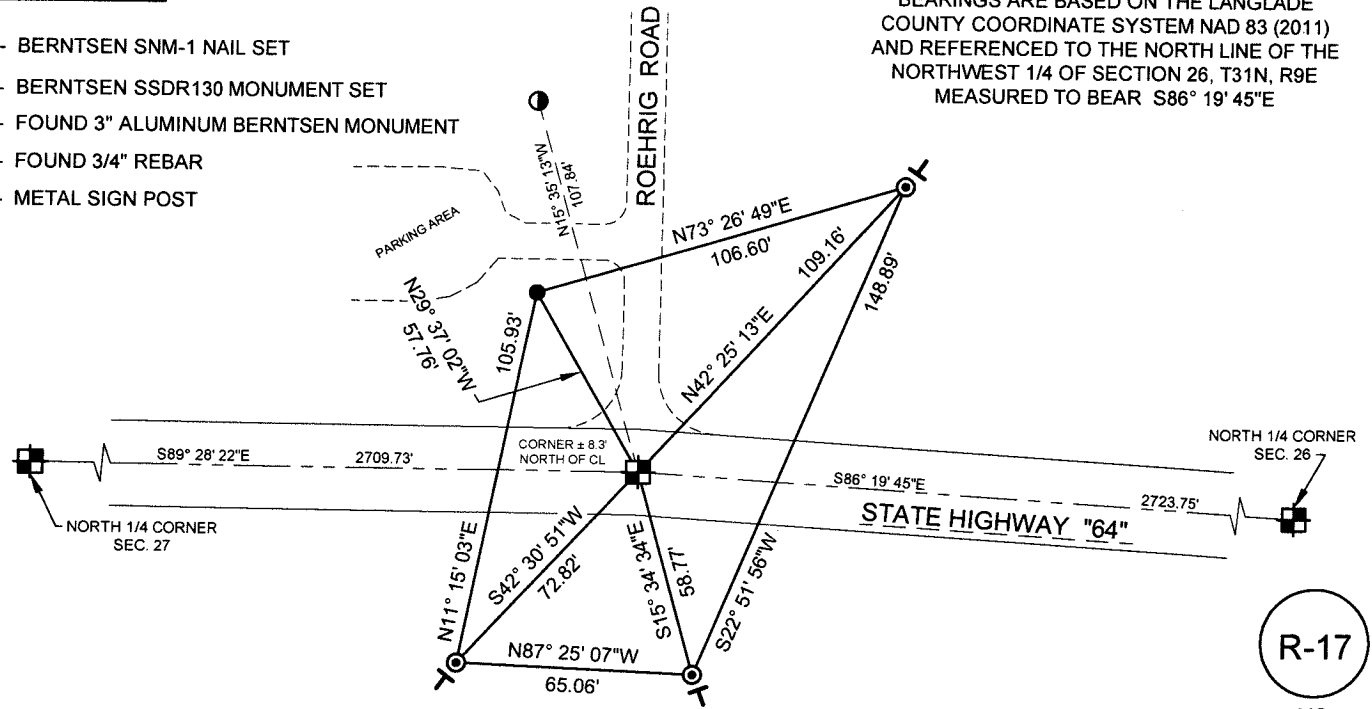
FIELD BOOK NO. S-12 PAGE NO. 58

COMPANY RIVERSIDE LAND SURVEYING LLC

TIE SKETCH:

- BERNTSEN SNM-1 NAIL SET
- - BERNTSEN SSSDR130 MONUMENT SET
- ⊙ - FOUND 3" ALUMINUM BERNTSEN MONUMENT
- ⊙ - FOUND 3/4" REBAR
- T - METAL SIGN POST

BEARINGS ARE BASED ON THE LANGLADE COUNTY COORDINATE SYSTEM NAD 83 (2011) AND REFERENCED TO THE NORTH LINE OF THE NORTHWEST 1/4 OF SECTION 26, T31N, R9E MEASURED TO BEAR S86° 19' 45"E



R-17
NO.