

CERTIFIED LAND CORNER RESTORATION

Index No. R-17

State of Wisconsin }
 County of LANGLADE } ss.

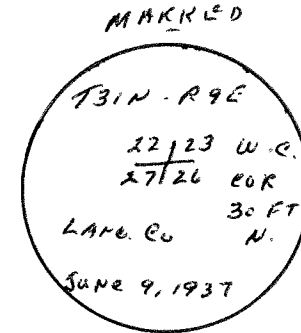
History of original corner establishment:

1930 RESURVEY

I RAYMOND S. HALLISY, do hereby certify that on the 6TH day of APRIL, 1985, I found evidence of the SECTION corner of 22, 23, 26 & 27 Township 31, North, Range 9E, Fourth Principal Meridian, as described hereon; and that from this evidence I established a new monument and accessories as described hereon to perpetuate the original location of this corner.

Description of corner evidence found:

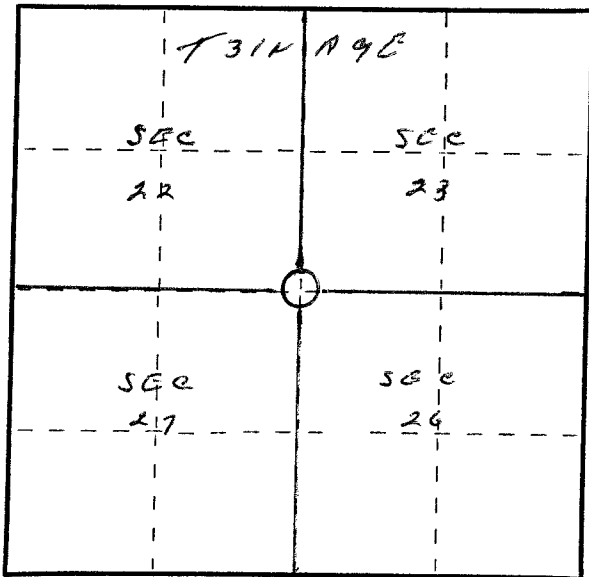
4" IRON PIPE WITH BRASS CAP
PULLED OUT BY VANDELS
SMALL ROCK MOUND



Resident witnesses:

Description of monument and accessories I established to perpetuate the original location of this corner.

RESET FROM W.C. 60 FT SOUTH OF TRUE CORNER
~~AND 30 FT~~
ROCK MOUND



○ = Corner monument restored.

Dated at ANTHRO, Wis., this 6th day of APRIL, 1985
 Signature Raymond S. Hallisy Title LAND SURVEYOR Registration No. 5-685
 (County Surveyor, Registered Land Surveyor, or other duly authorized official)
 Office of Register of Deeds, County of _____, I hereby certify that the within instrument was filed in this office for record on the _____ day of _____, 19____ at _____ o'clock _____ M.

(Register of Deeds)

By _____ Deputy

FORM 985 H. C. MILLER CO., MILWAUKEE

4310922000