

4310921 0020 2014

LANGLADE COUNTY U.S. PUBLIC LAND SURVEY MONUMENT LOCATION RECORD

SECTION 21
TOWNSHIP 31 N
RANGE 9 E

R-11
NO.

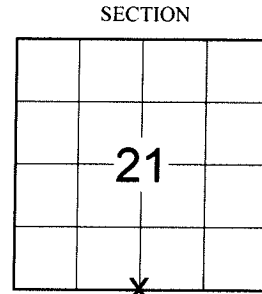
LANDMARK BENCHMARK
CORNER IDENTITY: S1/4 CORNER SEC. 21 (BERNTSEN SNM-1 NAIL) FOUND
RE-TIED SET

LANGLADE COUNTY COORDINATE: N: 342904.4970
E: 562772.1730

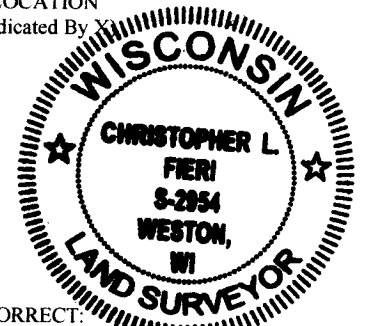
WEATHER: CLEAR AND SUNNY

DATE OF SURVEY: 8/12/2014 TEMPERATURE: 75 °F

SURVEY PARTY: CHRIS FIERI & IAN FIELD



LOCATION
(Indicated By X)



CERTIFIED CORRECT:

Christopher L. Fieri

CHRISTOPHER L. FIERI S-2954

Registered Land Surveyor

DATE: 10-9-2014

BASIS FOR MONUMENT LOCATION:

(DESCRIBE METHOD OF SURVEY AND CORNER AUTHENTICATION)

- 1860 - Hiram Fellows established the original section corner.
- 1919 - Malcolm Hutchinson performed a survey of the highway running along the section line. He made no mention of this corner, but measured the South line of the section to be 5245.68'.
- Date unknown - Baker performed a survey along the highway. By centerline stationing, he located section corners and culverts. Baker's distance along the South line of the section 21 was reported as 5190'.
- 1920 - The highway was surveyed by G.C. Miles. His notes show that the section and quarter corners were held as centerline PI's.
- 6/23/2006 - David Tlusty re-established corner by single proportionate measure.

8/12/2014 - I visited this corner before highway construction and recovered a Berntsen Nail at the corner location. I also found four (4) witness monuments from the previous tiesheet which checked the found corner monument well. Set four (4) Berntsen witness monuments and returned after the re-surfacing of Highway "64" to set a Berntsen SNM-1 Nail at the corner position.

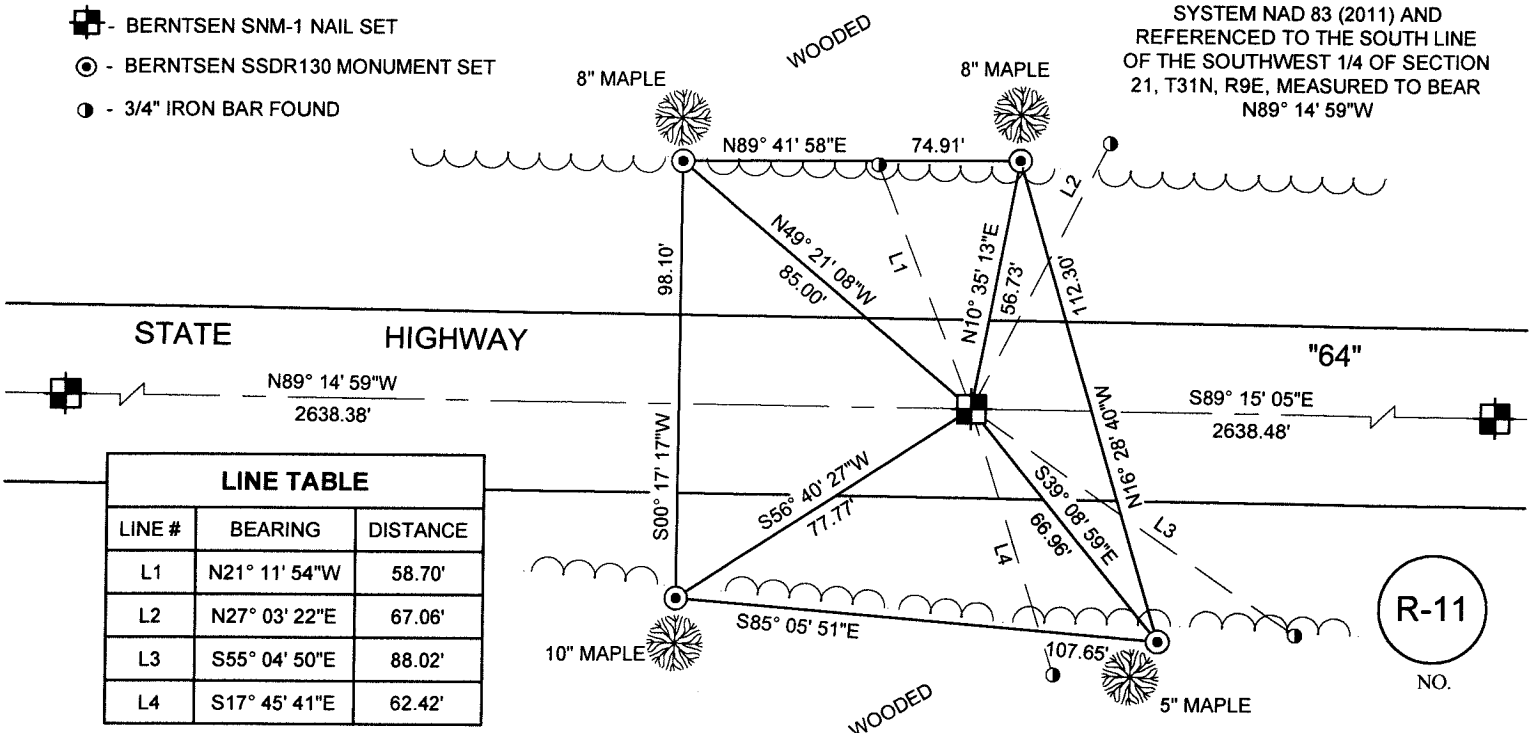
FIELD BOOK NO. S-12 PAGE NO. 60

COMPANY RIVERSIDE LAND SURVEYING LLC

TIE SKETCH:

- BERNTSEN SNM-1 NAIL SET
- ⊙ - BERNTSEN SDDR130 MONUMENT SET
- - 3/4" IRON BAR FOUND

BEARINGS ARE BASED ON THE
LANGLADE COUNTY COORDINATE
SYSTEM NAD 83 (2011) AND
REFERENCED TO THE SOUTH LINE
OF THE SOUTHWEST 1/4 OF SECTION
21, T31N, R9E, MEASURED TO BEAR
N89° 14' 59"W



LINE TABLE		
LINE #	BEARING	DISTANCE
L1	N21° 11' 54"W	58.70'
L2	N27° 03' 22"E	67.06'
L3	S55° 04' 50"E	88.02'
L4	S17° 45' 41"E	62.42'

R-11
NO.