

4310921 0000 2014

# LANGLADE COUNTY U.S. PUBLIC LAND SURVEY MONUMENT LOCATION RECORD

SECTION 28  
TOWNSHIP 31 N  
RANGE 9 E

R-13  
NO.

LANDMARK       BENCHMARK  
CORNER IDENTITY: NE CORNER SEC. 28 (BERNTSEN SNM-1 NAIL)      FOUND   
RE-SET       SET   
RE-TIED       RESET

LANGLADE COUNTY COORDINATE: N: 342870.030  
E: 565410.428

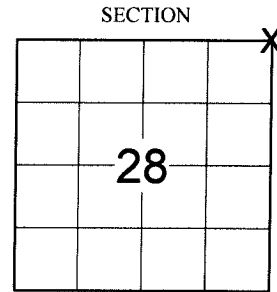
ELEVATION-(FEET): \_\_\_\_\_ DATUM: \_\_\_\_\_

WEATHER: CLEAR AND SUNNY

DATE OF SURVEY: 8/11/2014 TEMPERATURE: 75 °F

SURVEY PARTY: CHRIS FIERI & IAN FIELD

ACKLEY  
CITY, VILLAGE, TOWN



LOCATION  
(Indicated By X)

### BASIS FOR MONUMENT LOCATION:

(DESCRIBE METHOD OF SURVEY AND CORNER AUTHENTICATION)

1860 - Hiram Fellows set original corner.

3/29/1990 - William Kelly, S-1098 recovered an existing iron bar at the corner location. Set a P.K. Nail over the found bar and set witnesses to perpetuate the corner.

5/5/1994 - Barrientos and Associates visited this corner and recovered the P.K. Nail of record. Set four (4) 3" x 30" aluminum Berntsen Monuments to perpetuate the corner location.

8/11/2014 - I visited this corner prior to road construction. I recovered a Gin Spike at the corner location and all four (4) witness monuments from the previous tiesheet. Also found the Langlade County Aluminum Witness Monument to the North. Returned after the re-surfacing of Highway "64" and set a Berntsen SNM-1 Nail at the Corner location.



CERTIFIED CORRECT:

*Christopher L. Fieri*

CHRISTOPHER L. FIERI S-2954

Registered Land Surveyor

DATE: 10-9-2014

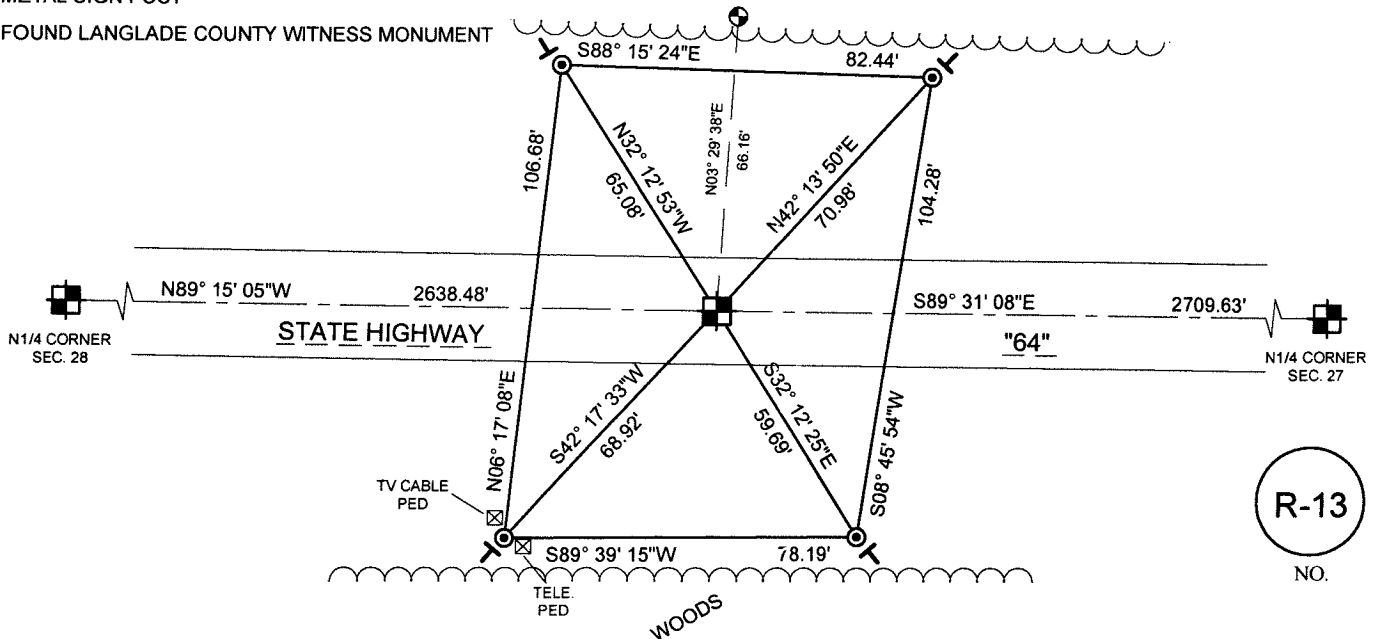
FIELD BOOK NO. S-12 PAGE NO. 59

COMPANY RIVERSIDE LAND SURVEYING LLC

### TIE SKETCH:

- BERNTSEN SNM-1 NAIL SET
- FOUND 3" ALUMINUM BERNTSEN MONUMENT
- METAL SIGN POST
- FOUND LANGLADE COUNTY WITNESS MONUMENT

BEARINGS ARE BASED ON THE LANGLADE COUNTY COORDINATE SYSTEM NAD 83 (2011) AND REFERENCED TO THE NORTH LINE OF THE NORTHEAST 1/4 OF SECTION 28, T31N, R9E MEASURED TO BEAR N89° 15' 05"W



R-13  
NO.