

4310920 0020 2014

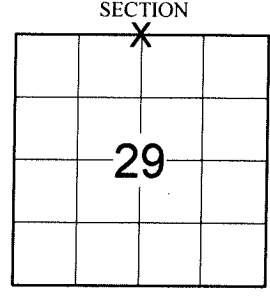
LANGLADE COUNTY U.S. PUBLIC LAND SURVEY MONUMENT LOCATION RECORD

SECTION 29
TOWNSHIP 31 N
RANGE 9 E
ACKLEY
CITY, VILLAGE, TOWN

R-7
NO.

LANDMARK BENCHMARK
CORNER IDENTITY: N1/4 CORNER SEC. 29 (BERNTSEN SNM-1 NAIL)
LANGLADE COUNTY COORDINATE: N: 342897.2360
E: 557526.8990
ELEVATION-(FEET): _____ DATUM: _____
WEATHER: CLEAR AND SUNNY
DATE OF SURVEY: 8/11/2014 TEMPERATURE: 75 °F
SURVEY PARTY: CHRIS FIERI & IAN FIELD

FOUND
SET
RESET
RE-TIED



LOCATION
(Indicated By X)



BASIS FOR MONUMENT LOCATION:

(DESCRIBE METHOD OF SURVEY AND CORNER AUTHENTICATION)

Original Corner set by Hiram Fellows in 1860.
1919 - Malcolm Hutchinson found an "original bearing tree" per FB122-121 while performing a road survey for the state.
12/1994 - David Tlusty S-1390 re-established this corner by proportioning Hutchinson's East - West distances of 1919 and the centerline of the existing road. Set a R.R. Spike at the corner on 6/14/1995 and set witness monuments to perpetuate it's location.
8/11/2014 - I visited this corner location and recovered the R.R. Spike of record and two (2) witness monuments from the previous tiesheet. Set four (4) Berntsen monuments to perpetuate the corner location. Returned after the re-surfacing of State Highway "64" and set a Berntsen SNM-1 Nail at the corner position.

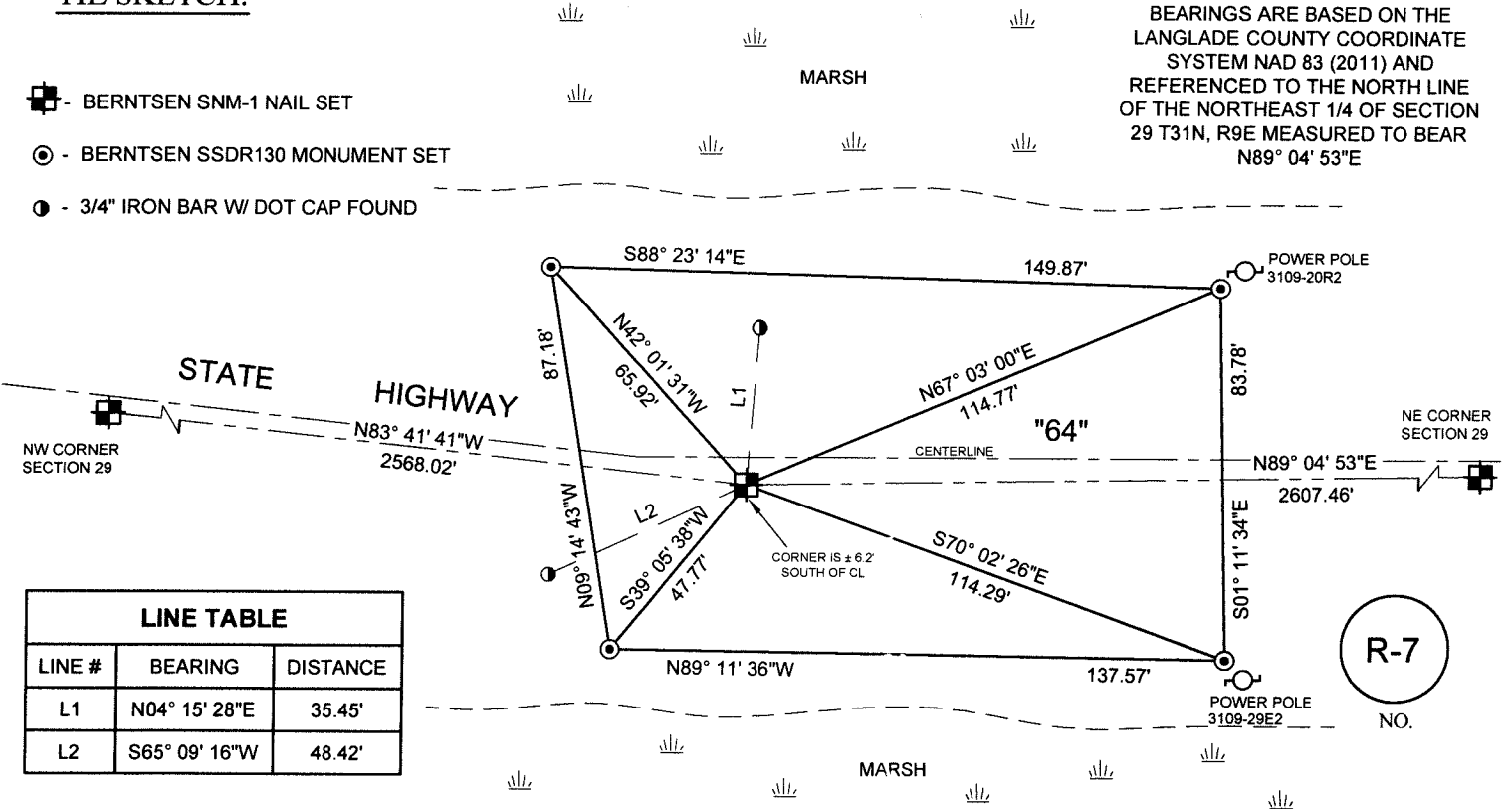
Christopher L. Fieri
CORRECT:
CHRISTOPHER L. FIERI S-2954
Registered Land Surveyor
DATE: 10-9-2014

FIELD BOOK NO. S-12 PAGE NO. 61
COMPANY RIVERSIDE LAND SURVEYING LLC

TIE SKETCH:

- BERNTSEN SNM-1 NAIL SET
- BERNTSEN SDR130 MONUMENT SET
- 3/4" IRON BAR W/ DOT CAP FOUND

BEARINGS ARE BASED ON THE
LANGLADE COUNTY COORDINATE
SYSTEM NAD 83 (2011) AND
REFERENCED TO THE NORTH LINE
OF THE NORTHEAST 1/4 OF SECTION
29 T31N, R9E MEASURED TO BEAR
N89° 04' 53"E



LINE TABLE		
LINE #	BEARING	DISTANCE
L1	N04° 15' 28"E	35.45'
L2	S65° 09' 16"W	48.42'

R-7
NO.