

LANGLADE COUNTY U.S. PUBLIC LAND CORNER RESTORATION

The Center of Section 19, T. 31 N., R. 9 E., Langlade County, WI.

Corner was: (check all that apply)

- Restored through acceptance of an obliterated evidence location.
- Restored through acceptance of a found perpetuated location.
- Determined to be lost and re-established through proportionate methods.
 Show bearings and distances to PLSS corners used for proportioning, and show original distances).
- Restored/recovered/re-established in a location that differs from a previously established position.
 (Show difference in plan view below).
- Check here if additional information is shown on the reverse side of this form.

4/31/09:192020

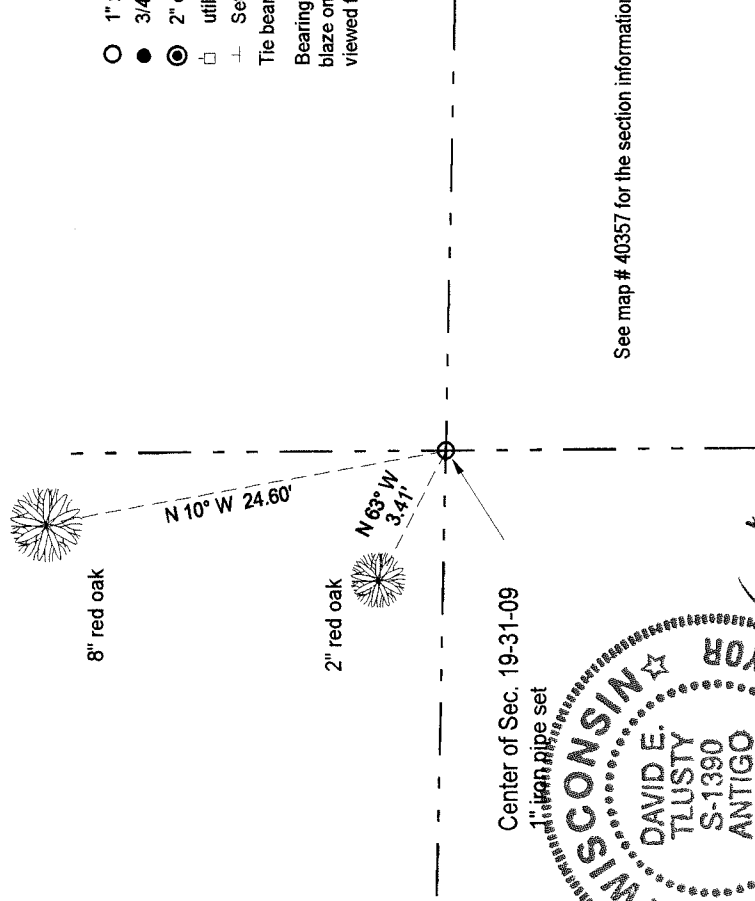
Describe record evidence, recovered physical evidence, occupational evidence, testimonial evidence and all other evidence considered in the recovery/restoration of the corner.

This corner was not monumented in the original government survey. In 1997, I surveyed in Section 30 and set the monument described below for the corner.

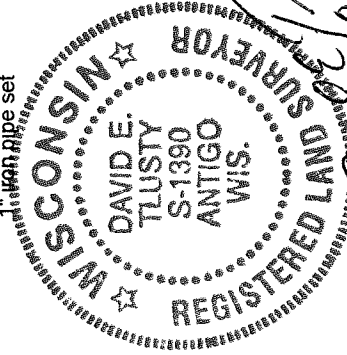
Physical description of the monument set:

Set a 1" x 30" iron pipe with 2" aluminum cap, up 0.2'.

Describe the accessories used to perpetuate the corner. Include a plan view drawing and accessories found/set. Describe measuring point on bearing trees. Show any topographic features that would aid in future recovery of the corner.

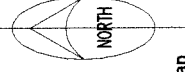


Center of Sec. 19-31-09
1" iron pipe set



David E. Tlusty, Registered Land Surveyor, as Langlade County Surveyor, certify that the corner location on this record was determined by me and that this U.S. Public Land Survey Monument Record is correct to the best of my knowledge and belief.

Field book 6-107



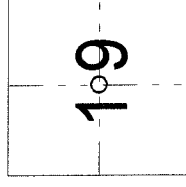
LEGEND

- 1" x 30" iron pipe set with alum. cap
- 3/4" iron pipe found
- ⊙ 2" exist. witness monument found
- utility pole
- + Set white vinyl sign post
- ⊕ Tie bearings with hand compass.

Bearing trees measured to a nail in a low blaze on the left side of the tree as viewed from the corner.

Index No. _____

P3 31-09



○ = corner perpetuated

The Center of Section 19,
T. 31 N., R. 9 E.,
Langlade County, WI

See map # 40357 for the section information.