

4310919 0020 2014

LANGLADE COUNTY U.S. PUBLIC LAND SURVEY MONUMENT LOCATION RECORD

SECTION 30
TOWNSHIP 31 N
RANGE 9 E

R-3
NO.

LANDMARK BENCHMARK

FOUND
SET
RESET
RE-TIED

CORNER IDENTITY: N1/4 CORNER SEC. 30 (BERNTSEN SNM-1 NAIL)

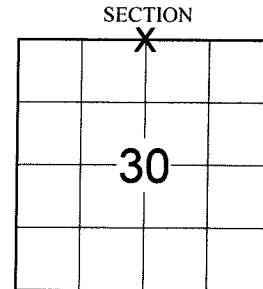
LANGLADE COUNTY COORDINATE: N: 343473.0003
E: 551732.4340

WEATHER: CLEAR AND SUNNY

DATE OF SURVEY: 8/12/2014 TEMPERATURE: 75 °F

SURVEY PARTY: CHRIS FIERI & IAN FIELD

ACKLEY
CITY, VILLAGE, TOWN



BASIS FOR MONUMENT LOCATION:

(DESCRIBE METHOD OF SURVEY AND CORNER AUTHENTICATION)

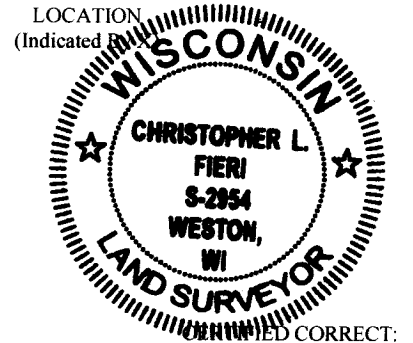
Original corner was set by Hiram C. Fellows in 1860.

1912 - Malcolm Hutchinson found the 1/4 post and original BT, dead but plainly marked. He marked new BT's.

November 1921 - W.C. Weby used this corner for survey work in the SW quarter of Section 19 and set a pipe in the highway for the corner.

5/10/1994 - David Tlusty S-1390 found a 2-1/2" x 3" T-shaped iron rod 25" below the surface of the roadway. He also found remains of a Bearing tree by Hutchinson that matched this found monument. He accepted the found iron as the corner and set four (4) 2" x 30" Berntsen Aluminum Monuments with 3" caps to perpetuate the corner location. Also set a 3/4" bar in the remains of the bearing tree he found as an additional reference monument.

8/12/2014 - I recovered a Mag Nail at the corner location along with all four (4) Berntsen witness monuments set by David Tlusty in 1994. Returned after re-surfacing of State Highway "64" and set a Berntsen SNM-1 Nail at the corner location.



Christopher L. Fieri

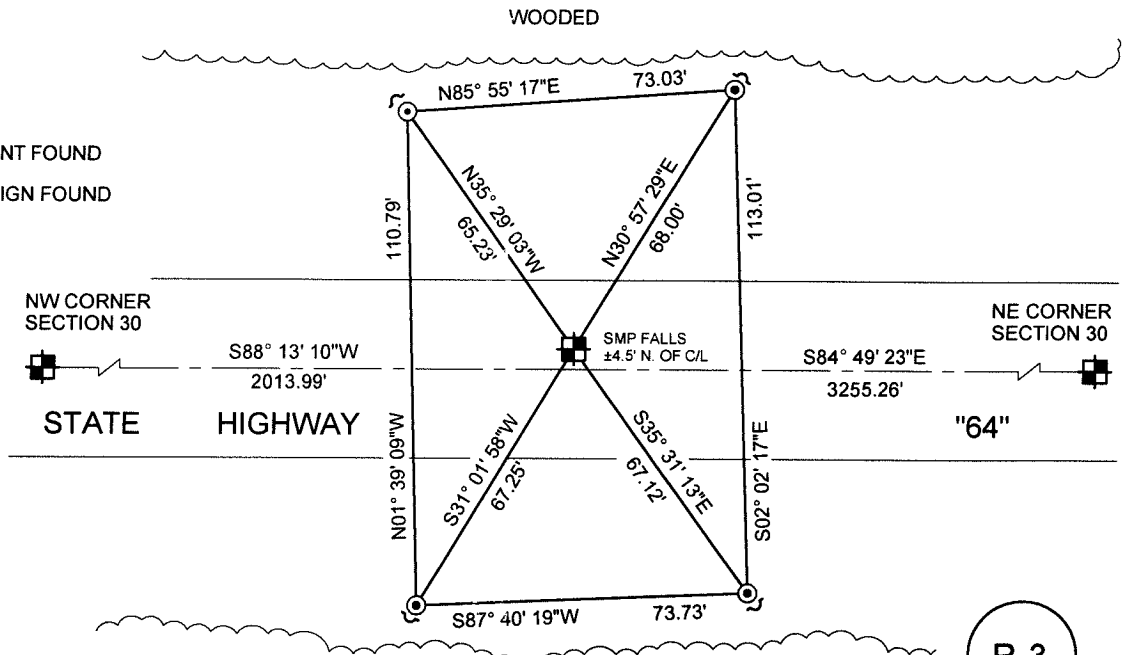
CHRISTOPHER L. FIERI S-2954
Registered Land Surveyor

DATE: 10-9-2014

TIE SKETCH:

- BERNTSEN SNM-1 NAIL SET
- WISDOT ALUMINUM MONUMENT FOUND
- METAL WITNESS POST AND SIGN FOUND

BEARINGS ARE BASED ON THE LANGLADE COUNTY COORDINATE SYSTEM NAD 83 (2011) AND REFERENCED TO THE NORTH LINE OF THE NORTHWEST 1/4 OF SECTION 30, T31N, R9E MEASURED TO BEAR N88° 13' 10"E



R-3
NO.

FIELD BOOK NO. S-12 PAGE NO. 62

COMPANY RIVERSIDE LAND SURVEYING LLC

WOODED