

U.S. PUBLIC LAND SURVEY MONUMENT RECORD

(Prepared and as required by S. A-E 7.08 WI Administrative Code)

The SOUTH QUARTER corner of Section 18, T. 31 N., R. 9 E., Langlade County, WI

Corner was: (check all that apply)

- Restored through acceptance of an obliterated evidence location.
- Restored through acceptance of a found perpetuated location.
- Determined to be lost and re-established through proportionate methods.
(Show bearings and distances to PLSS corners used for proportioning.)
- Restored/recovered/reestablished in a location that differs from a previously established position. (Show difference in plan view below.)

43109180020

- Check here if additional information is shown on the reverse side of this form.

Describe record evidence, recovered physical evidence, occupational evidence, testimonial evidence and all other evidence considered in the recovery/restoration of the corner.

The original corner was established in 1860 by Hiram C. Fellows. Original bearing trees: birch, 12", S53°E, 27 lks. and a hemlock, 20", N42°E, 12 lks. Brooks, 1906, found no original evidence and reset the corner by proportionate methods. Hutchinson, 1912, found stake by previous surveyor. Webley, 1921, apparently found this corner and marked a birch, 24", W, 26 lks. (17.2'), and a hemlock, 20", N46°W, 53 lks. (34.98'). 11/14/94 D. Tlusty found birch stump that, because of blaze heal marks, is obviously BT. Re-set corner (rebar) East, 17.2' from birch stump. 06/01/95 D. Tlusty found remains of hemlock stump N55°W, 35'. Marked BT's. 10/16/97 D. Tlusty, B. Markowski replaced rebar with a 1 1/4" x 30" iron pipe with 4" brass cap up 0.3'. Area has been clear-cut. Remeasured 1995 BT's as shown below.

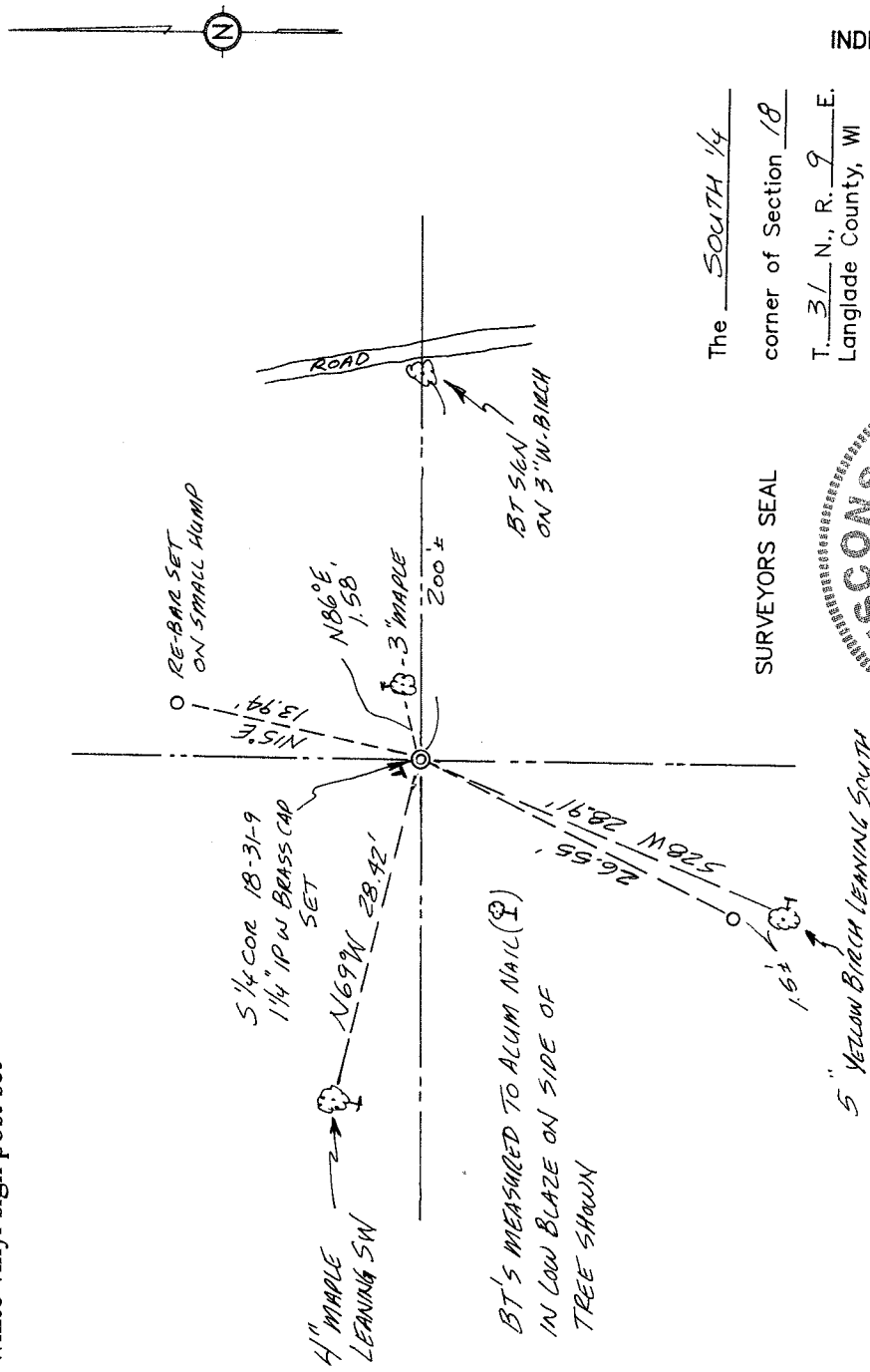
Physical description of the monument set:

For the corner, I set a 1 1/4" x 30" iron pipe monument with 4" brass cap up 0.3'. Set white vinyl sign post 0.5' north of corner.

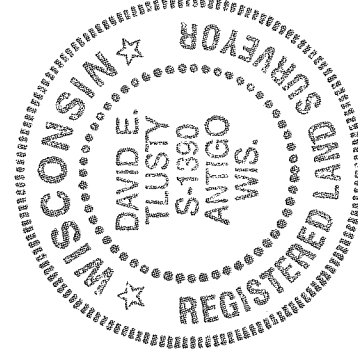
Describe the accessories used to perpetuate the location of the corner. Include a plan view drawing and indicate accessories found/set. Describe measuring point on bearing trees. Show any topographic features that would aid in future recovery of the corner.

- = 3/4" x 30" rebar set flush with ground
- = white vinyl sign post set

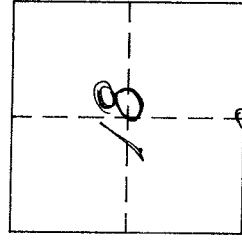
Notes FB6-97



SURVEYORS SEAL



The SOUTH 1/4
corner of Section 18
T. 31 N., R. 9 E.
Langlade County, WI



○ = Location of corner

INDEX No. 23

I, David E. Tlusty, Langlade County Surveyor, certify that the corner location shown on this record was determined by me or under my direction and control and that this U.S. Public Land Survey Monument Record is correct and complete to the best of my knowledge and belief.

David E. Tlusty 12/30/97
Signature Date