

# U.S. PUBLIC LAND SURVEY MONUMENT RECORD

(Prepared and as required by S. A-E 7.08 WI Administrative Code)

The SOUTHEAST corner of Section 18, T. 31 N., R. 9 E., Langlade County, WI

Corner was: (check all that apply)

- Restored through acceptance of an obliterated evidence location. --BY DISTANCES.
- Restored through acceptance of a found perpetuated location.
- Determined to be lost and re-established through proportionate methods.
- Restored/recovered/reestablished in a location that differs from a previously established position. (Show difference in plan view below.)

43109180000

- Check here if additional information is shown on the reverse side of this form.

**Describe record evidence, recovered physical evidence, occupational evidence, testimonial evidence and all other evidence considered in the recovery/restoration of the corner.**

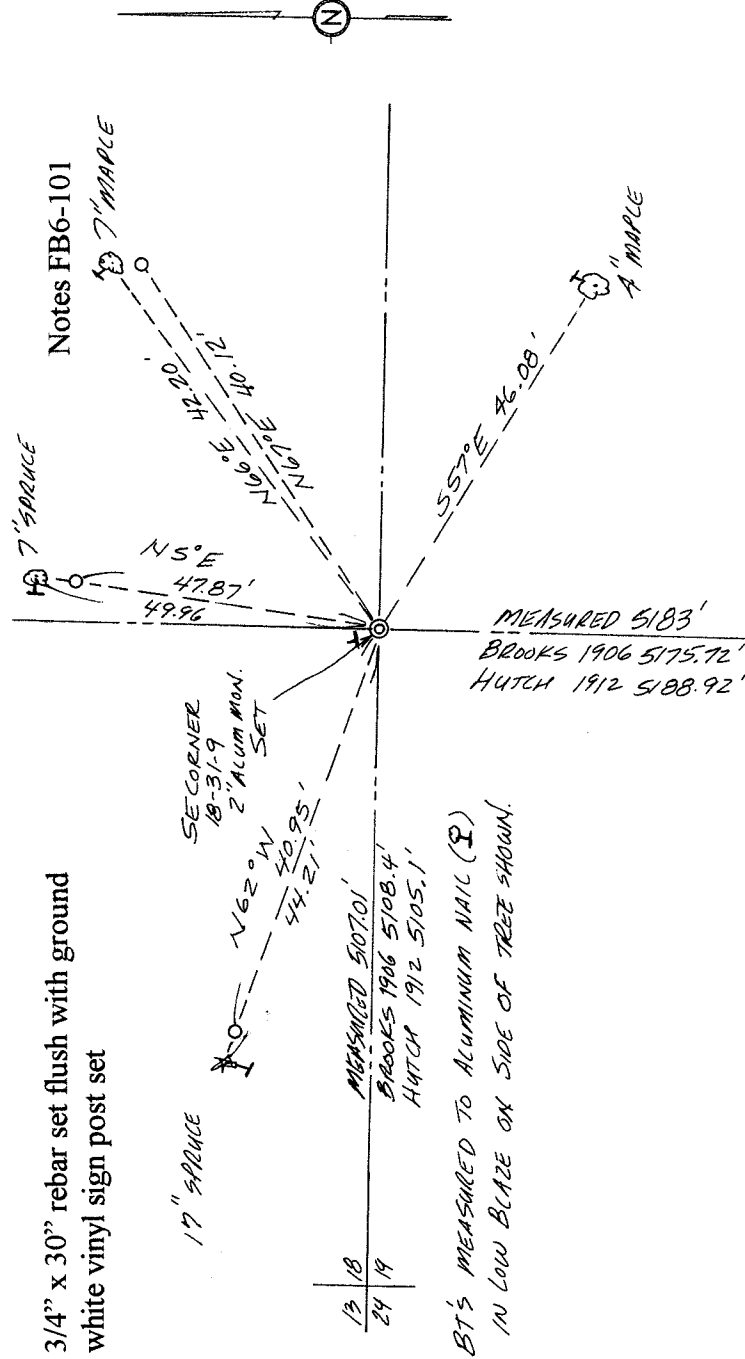
The original corner was established in 1860 by Hiram C. Fellows. Original bearing trees: birch, 16", S35°E, 20 lks. and a maple, 24", N20°W, 18 lks. Brooks, 1906, found original bearing trees "good" for this corner and measured to the NW and SE corners of Section 19. Hutchinson, 1912, found stake by previous surveyor and stump of original bearing tree. He marked a new hemlock, 14", N8.5°E, 21 lks. and measured to the NW and SE corners of Section 19. 10/16/97 D. Tlusty, B. Markowski, finding nothing after several searches of the area, re-set corner by averaging Brooks' and Hutchinsons' distances to the NE and SE corners of Section 19. Based on the previous history and measurements by Brooks & Hutchinson, I accept this location as the best evidence of the original corner location.

**Physical description of the monument set:**

For the corner, I set a 2" x 42" aluminum pipe monument with 3 1/4" aluminum cap up 6". Anchored monument to clay soil with a bent 1/2" x 48" re-bar under monument. Set white vinyl sign post 0.5' north of corner.

Describe the accessories used to perpetuate the location of the corner. Include a plan view drawing and indicate accessories found/set. Describe measuring point on bearing trees. Show any topographic features that would aid in future recovery of the corner.

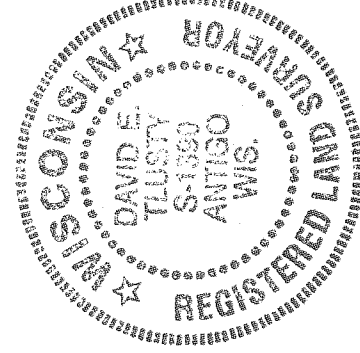
- = 3/4" x 30" rebar set flush with ground
- ↓ = white vinyl sign post set



19 20  
30 29

SURVEYORS SEAL  
The SOUTHEAST  
corner of Section 18

T. 31 N., R. 9 E.  
Langlade County, WI



INDEX No. N5

I, David E. Tlusty, Langlade County Surveyor, certify that the corner location shown on this record was determined by me or under my direction and control and that this U.S. Public Land Survey Monument Record is correct and complete to the best of my knowledge and belief.

David E. Tlusty 12/30/97  
Signature Date

○ = Location of corner