

CERTIFIED LAND CORNER RESTORATION

31-9

Index No. F-25

State of Wisconsin }
County of Langlade } ss.

History of original corner establishment:

Corner set in the 1930 resurvey

I Raymond J. Hallisy, do hereby certify that on the 5th day of July, 1969, I found evidence of the N 1/16 corner of 12 & 7 Township T31N R9 & 10E, North, Range , Fourth, Principal Meridian, as described hereon; and that from this evidence I established a new monument and accessories as described hereon to perpetuate the original location of this corner.

Description of corner evidence found:

Found squared post down point in place. Marked Cor. 10 Ft. E.

Resident witnesses:

.....
.....
.....

Description of monument and accessories I established to perpetuate the original location of this corner.

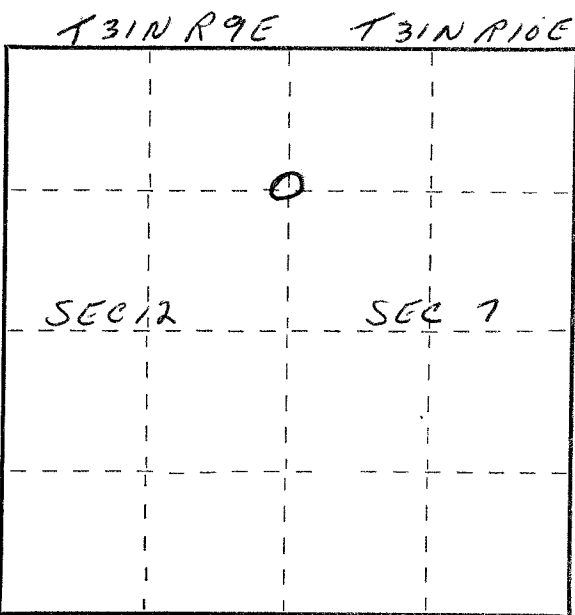
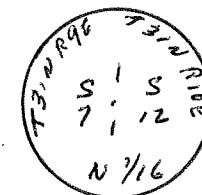
Set 2" iron pipe with brass cap at true location.

B.T.'s to corner

Aspen 4" S38W 39.2 Links

Aspen 13" S83W 24.5 Links

B.T.'s faced at base and scribed BT



○ = Corner monument restored.

Dated at Antigo Wis., this 5th day of July, 1969.

Signature Raymond J. Hallisy Title Reg. Lang Surveyor Registration No. S-685
(County Surveyor, Registered Land Surveyor, or other duly authorized official)

Office of Register of Deeds, County of , I hereby certify that the within instrument was filed in this office for record on the day of , 19 at o'clock M.

.....
(Register of Deeds)

By Deputy

FORM 985 H. C. MILLER CO., MILWAUKEE

43109123000