

CERTIFIED LAND CORNER RESTORATION

Index No. 5-19

State of Wisconsin }
County of LANGLADE } ss.

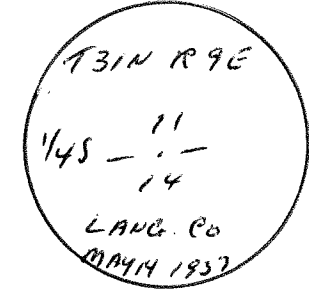
History of original corner establishment:

CORNER SET IN THE 1930 RESURVEY

I RAYMOND S. HALLISY, do hereby certify that on the 2ND day of APRIL, 1988, I found evidence of the Y4 corner of T11 S 14 Township 31, North, Range 9 E, Fourth Principal Meridian, as described hereon; and that from this evidence I established a new monument and accessories as described hereon to perpetuate the original location of this corner.

Description of corner evidence found:

4" IRON PIPE WITH BRASS CAP

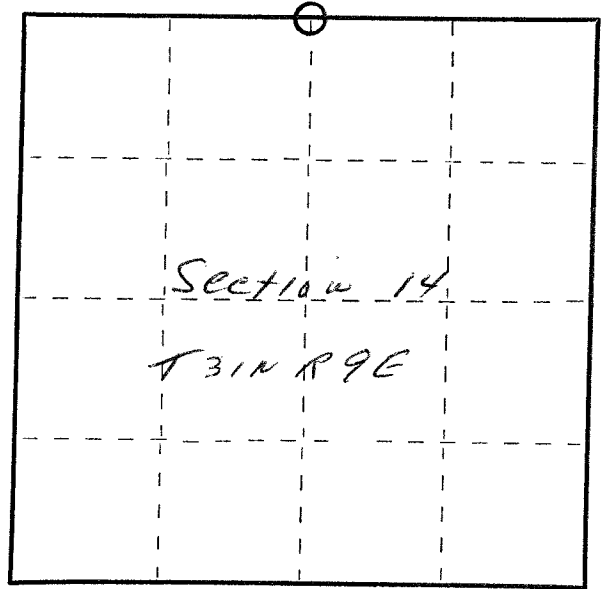


Resident witnesses:

Description of monument and accessories I established to perpetuate the original location of this corner.

NEW BT'S

- 12" RED MAPLE N 42 W 17' 11"
- 8" RED MAPLE N 16 E 6' 3"
- 8" HARD MAPLE S 28 E 5' 5"
- 4" HARD MAPLE S 20 W 20'



Dated at Artigo, Wis., this 2ND day of APRIL, 1988

Signature Raymond S. Hallisy Title SURVEYOR Registration No. 5685
(County Surveyor, Registered Land Surveyor, or other duly authorized official)

Office of Register of Deeds, County of _____, I hereby certify that the within instrument was filed in this office for record on the _____ day of _____, 19____ at _____ o'clock _____ M.

(Register of Deeds)

By _____ Deputy

FORM 985 H. C. MILLER CO., MILWAUKEE
43109110020

○ = Corner monument restored.