

LANGLADE COUNTY U.S. PUBLIC LAND CORNER RESTORATION

The Southeast corner of Section 10, T. 31 N., R. 09 E., Langlade County, WI.

Corner was: (check all that apply)

4310910 0000

- Restored through acceptance of an obliterated evidence location.
- Restored through acceptance of a found perpetuated location.
- Determined to be lost and re-established through proportionate methods.
- Show bearings and distances to PLSS corners used for proportioning, and show original distances).
- Restored/recovered/re-established in a location that differs from a previously established position.
- (Show difference in plan view below).
- Check here if additional information is shown on the reverse side of this form.

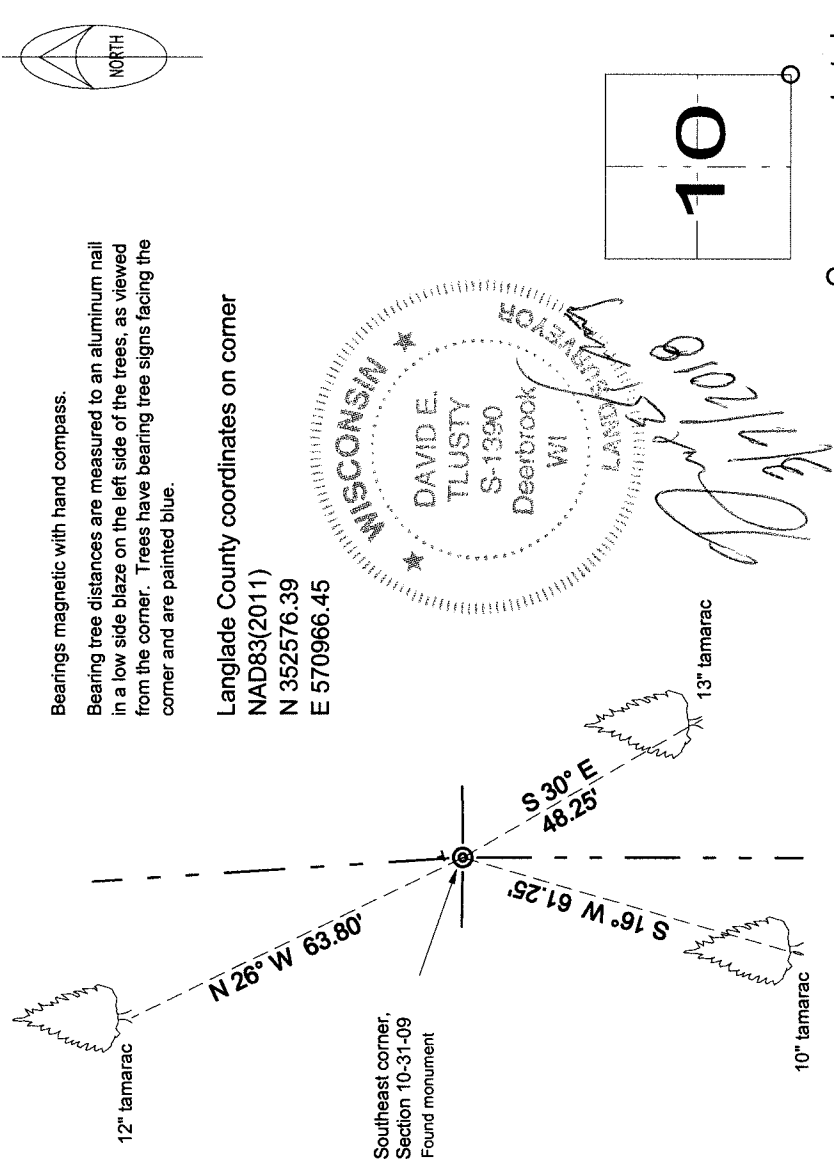
Describe record evidence, recovered physical evidence, occupational evidence, testimonial evidence and all other evidence considered in the recovery/restoration of the corner.

The original corner was established in 1859 by Hiram C. Fellows. Original bearing trees: tamarac, 12", N26W, 26 links and a tamarac, 10", N47E, 44 links.
 In the 1930's, Darwin Hintz surveyed "to the orig sec corner. Orig tam N26E, 26 links". Hintz marked two new bearing trees: tamarac, 5", S 23 1/2 E, 34.4 lks and a tamarac, 5", N 54 1/2 E, 109.4 lks. and set a 4" iron pipe with brass cap for corner.
 D. Tlusty. 02/27/2018 Found 4" iron pipe with brass cap frozen solid in ground and leaning at 45° towards N30°W. GPS shot and ties were at the apparent location if monument was reset vertical. The area was recently clearcut, no remaining evidence of the 1930's BT's. Distance to the SW corner of Section 7 measures 21173.5' which compares well to Hintz distance of 21166.9'. I accepted the monument as the best evidence of the original corner location and perpetuated the location as shown below.

Physical description of the monument set:

I left the existing monument in place and set a 6' steel channel post, S80E, 0.6'

Describe the accessories used to perpetuate the corner. Include a plan view drawing and accessories found/set. Describe measuring point on bearing trees. Show any topographic features that would aid in future recovery of the corner.



O = corner perpetuated

The Southeast corner of Section 10, T. 31 N., R. 09 E., Langlade County, WI

I, David E. Tlusty, Registered Land Surveyor, as Langlade County Surveyor, certify that the corner location on this record was determined by me and that this U.S. Public Land Survey Monument Record is correct to the best of my knowledge and belief.