

U.S. PUBLIC LAND SURVEY MONUMENT RECORD

(Prepared and as required by S. A-E 7.08 WI Administrative Code)

The WEST 1/4 corner of Section 1, T. 31 N., R. 9 E., Langlade County, WI
 Corner was (check all that apply)

- Restored through acceptance of an obliterated evidence location.
- Restored through acceptance of a found perpetuated location.
- Determined to be lost and re-established through proportionate methods. (show bearings and distances to PLSS corners used for proportioning.)
- Restored/recovered/re-established in a location that differs from a previously established position. (Show difference in plan view below.)
- Check here if additional information is shown on the reverse side of this form.

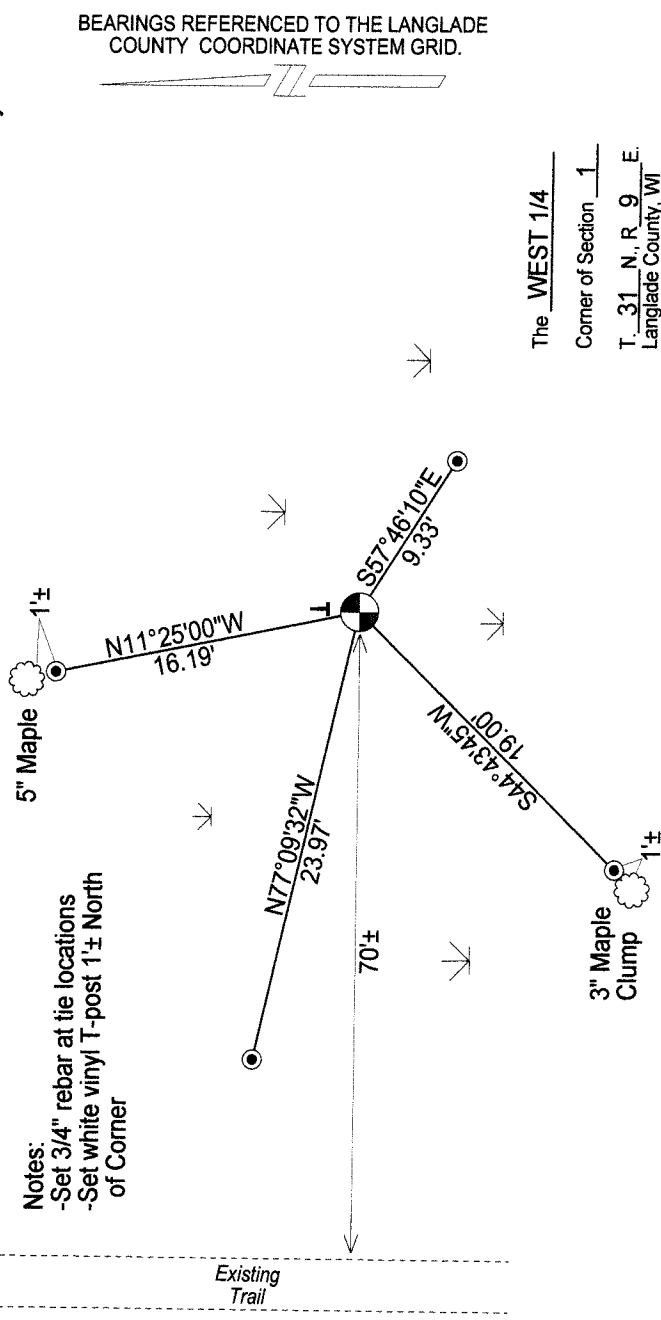
Describe record evidence, recovered physical evidence, occupational evidence, testimonial evidence, and all other evidence considered in the recovery/restoration of the corner.

- 1860- Government Surveyor H.C. Fellows set corner in original survey.
 BTs: 12" Tamarack N60°E, 15 links; 10" Birch, S16°W, 12 links.
- 1937- Corner re-established in 1937 resurvey.
- 1978 - Hallisy found "4 inch iron pipe with brass cap down & covered with moss & grass in low wet area. Small rock mound where corner had been set." Hallisy reset corner and marked new BT's;
 5" Red Maple, N21°W, 65.3 links; 9" Aspen, S37°E, 32.8 links; 11" Aspen, S48°W, 31.8 links.
 Hallisy prepared and filed a tiesheet at Langlade County.
- 2011 - I found 4" brass capped iron pipe dislodged from rock mound and lying on ground.
 I did not find any of Hallisy's ties. I reset the monument upright in rock mound.

Physical description of the monument set:

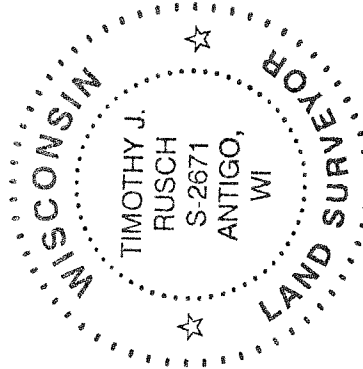
I accept the 4" brass capped iron pipe as corner location, and tied it out as follows.

Describe the accessories used to perpetuate the location of the corner. Include a plan view drawing and indicate accessories found/set. Describe measuring point on bearing trees. Show any topographic features that would aid in future recovery of the corner.



The WEST 1/4
 Corner of Section 1
 T. 31 N., R. 9 E.
 Langlade County, WI

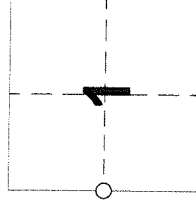
SURVEYOR'S SEAL



I, Timothy J. Rusch certify that the corner location shown on this record was determined by me or under my direction and control and that this U.S. Public Land Survey Monument Record is correct and complete to the best of my knowledge and belief.

Timothy J. Rusch 01-09-2012
 Signature Date

INDEX No. C-21 (31-9)



○ = Location of corner

110902 2000