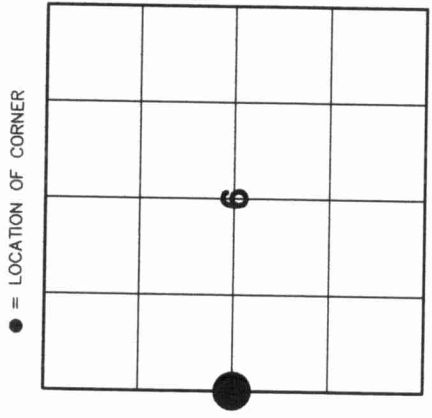


43109 01 2000

U.S. PUBLIC LAND SURVEY MONUMENT RECORD

HISTORY OF ORIGINAL CORNER ESTABLISHMENT AND SUBSEQUENT RESTORATION AND DESCRIPTION OF ANY RECORD, MONUMENT OCCUPATIONAL, TESTIMONIAL OR OTHER EVIDENCE CONSIDERED:

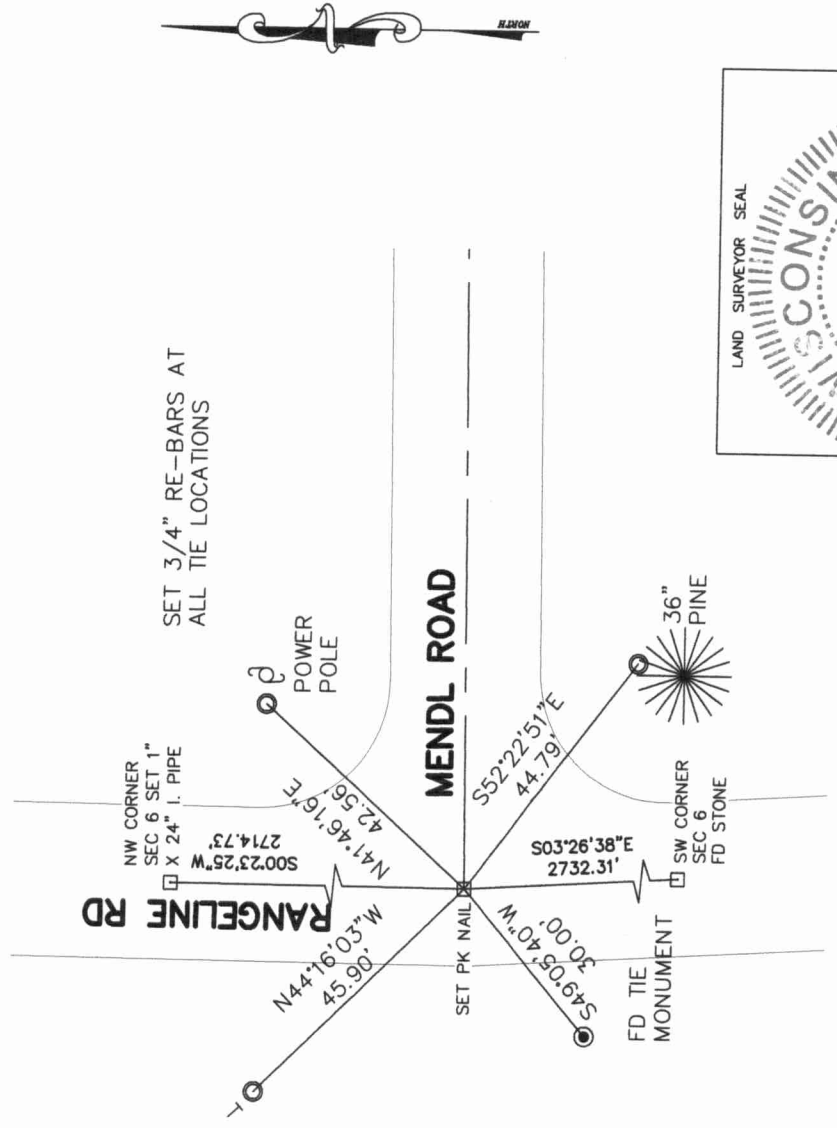
THE ORIGINAL CORNER WAS SET BY FELLOWS IN 1859. THE ORIGINAL BEARING TREES WERE:
 7" IRONWOOD S27°W - 17LKS
 10" BIRCH S88°E - 18LKS
 THIS CORNER WAS RESURVEYED BY D.A HINTZ. HINTZ SET THE BRASS MONUMENT SW - 30 FEET WITH A RECORD DISTANCE OF
 41.42 CHNS TO THE SW
 41.14 CHNS TO THE NW
 BILL KELLY SET A RR SPIKE AT A DISTANCE OF 33 FEET FROM THE BRASS MONUMENT, DISREGARDING THE 30 FOOT STAMPED IN THE CAP. WE PULLED 30 FEET TO THE NORTHEAST AND SET A PK NAIL. THE NAIL MATCHED WITH THE DISTANCE FROM THE NW AND THE SW CORNERS.



SECTION 6
 TOWNSHIP 31 NORTH, RANGE 10 EAST
 TOWN OF ACKLEY
 LANGLADE COUNTY, WISCONSIN

- CORNER WAS: (CHECK ALL THAT APPLY)
- RESTORED THROUGH ACCEPTANCE OF AN OBLITERATED EVIDENCE LOCATION
 - RESTORED THROUGH ACCEPTANCE OF A FOUND PERPETUATED LOCATION
 - CONSIDERED A LOST CORNER AND REESTABLISHED THROUGH LOST CORNER PROPORTIONATE METHODS (INCLUDE A PLAN VIEW DRAWING SHOWING DISTANCES AND DIRECTIONS TO OTHER PUBLIC LAND SURVEY CORNERS USED FOR PROPORTIONING AND DETERMINING THE CORNER LOCATION)
 - RESTORED OR REESTABLISHED IN A LOCATION THAT DIFFERS FROM A PREVIOUS RESTORATION OR REESTABLISHMENT (INCLUDE A PLAN VIEW DRAWING AND INDICATE WHAT WAS SET AND/OR FOUND)
 - CHECK IF THERE IS ADDITIONAL INFORMATION ON BACK

DESCRIBE THE MONUMENT AND ACCESSORIES USED TO PERPETUATE THE LOCATION OF THE CORNER. (INCLUDE A PLAN VIEW DRAWING AND INDICATE WHAT WAS SET AND/OR FOUND) ALSO INCLUDE FOUR TIES TO THE SECTION CORNER AND DESCRIPTION OF THE TIES.

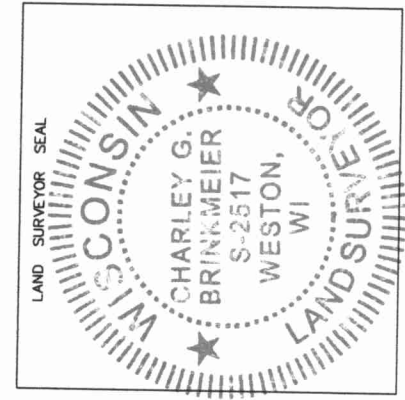


CHARLEY G. BRINKMEIER

(Type or print name) CERTIFY THAT THE CORNER LOCATION SHOWN ON THIS RECORD WAS DETERMINED BY ME OR UNDER MY DIRECTION AND CONTROL AND THAT THIS U.S. PUBLIC LAND SURVEY MONUMENT RECORD IS CORRECT AND COMPLETE TO THE BEST OF MY KNOWLEDGE AND BELIEF.

Charley G. Brinkmeier
 SIGNATURE

12-29-08
 DATE



C25 31-09
 INDEX NO.

CERTIFIED LAND CORNER RESTORATION

Index No. C-1
31-10

State of Wisconsin }
County of LANGLADE } ss.

I WILLIAM F. KELLY, do hereby certify that on the 5th day of NOV., 1981, I found evidence of the E. 1/4 corner of SEC. 1 Township 31, North, Range 9 EAST, Fourth Principal Meridian, as described hereon; and that from this evidence I established a new monument and accessories as described hereon to perpetuate the original location of this corner.

Resident witnesses:

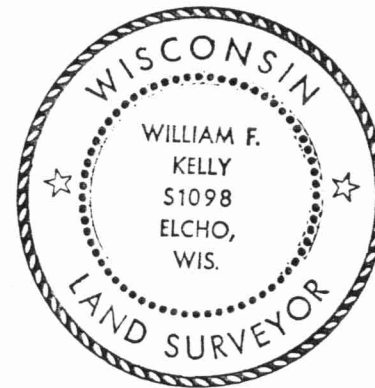
.....
.....
.....

History of original corner establishment:
ORIGINAL CORNER ESTABLISHED BY
HIRAM C. FELLOWS IN AUG. 1860

CORNER VERIFIED ON 1937
RESURVEY OF TWP.

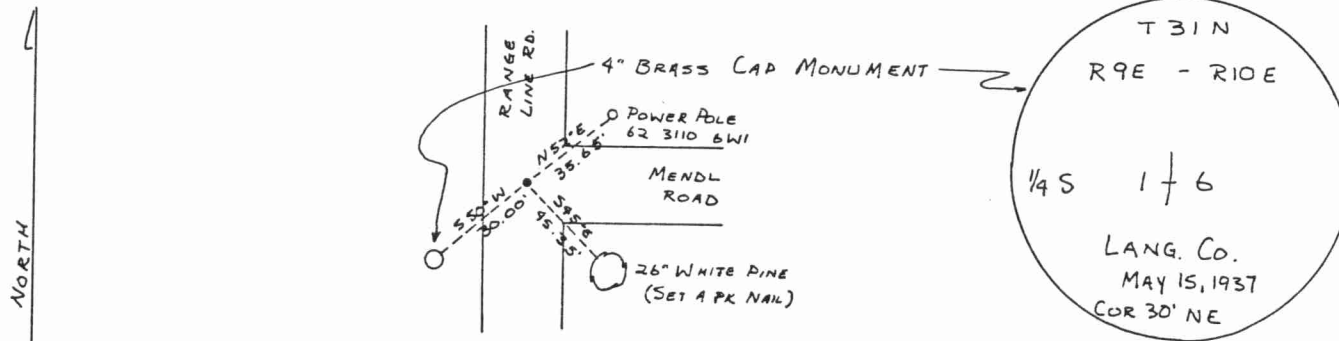
Description of corner evidence found:

FOUND A 4" BRASS CAP WIT. MONUMENT.



William F. Kelly

Description of monument and accessories I established to perpetuate the original location of this corner.



Dated at ELCHO, Wis., this 5th day of NOV., 1981.

Signature William F. Kelly Title COUNTY SURVEYOR Registration No. 1098
(County Surveyor, Registered Land Surveyor, or other duly authorized official)

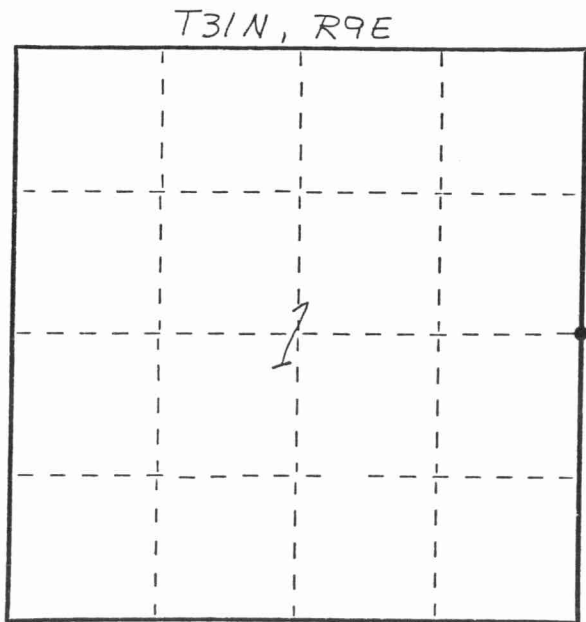
Office of Register of Deeds, County of....., I hereby certify that the within instrument was filed in this office for record on the..... day of....., 19..... at..... o'clock..... M.

.....
(Register of Deeds)

By..... Deputy

FORM 985 H. C. MILLER CO., MILWAUKEE

431891012000



○ = Corner monument restored.