

CERTIFIED LAND CORNER RESTORATION

Index No. C-25

State of Wisconsin }
County of LANGLADE } ss.

I WILLIAM F. KELLY, do hereby certify that on the 5th day of NOV., 1981, I found evidence of the E. 1/4 corner of SEC. 1 Township 31, North, Range 9 EAST, Fourth Principal Meridian, as described hereon; and that from this evidence I established a new monument and accessories as described hereon to perpetuate the original location of this corner.

Resident witnesses:

.....
.....
.....

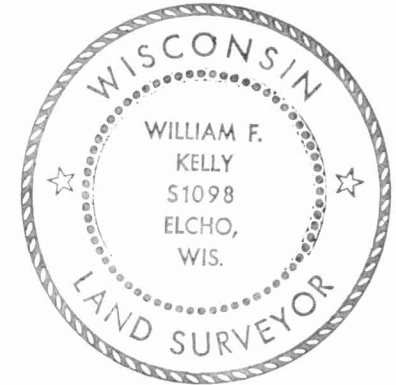
History of original corner establishment:

ORIGINAL CORNER ESTABLISHED BY
HIRAM C. FELLOWS IN AUG. 1860

CORNER VERIFIED ON 1937
RESURVEY OF TWP.

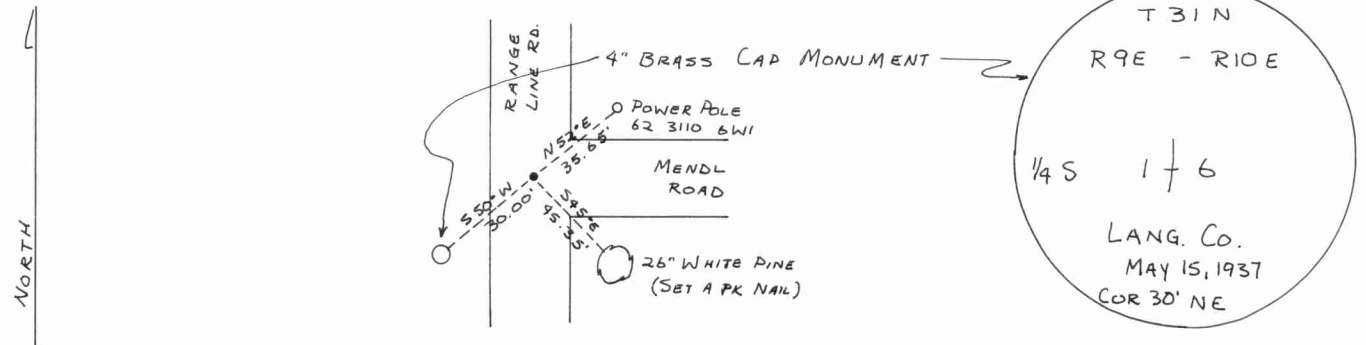
Description of corner evidence found:

FOUND A 4" BRASS CAP WIT. MONUMENT.



William F. Kelly

Description of monument and accessories I established to perpetuate the original location of this corner.



Dated at ELCHO, Wis., this 5th day of NOV., 1981

Signature William F. Kelly Title COUNTY SURVEYOR Registration No. 1098
(County Surveyor, Registered Land Surveyor, or other duly authorized official)

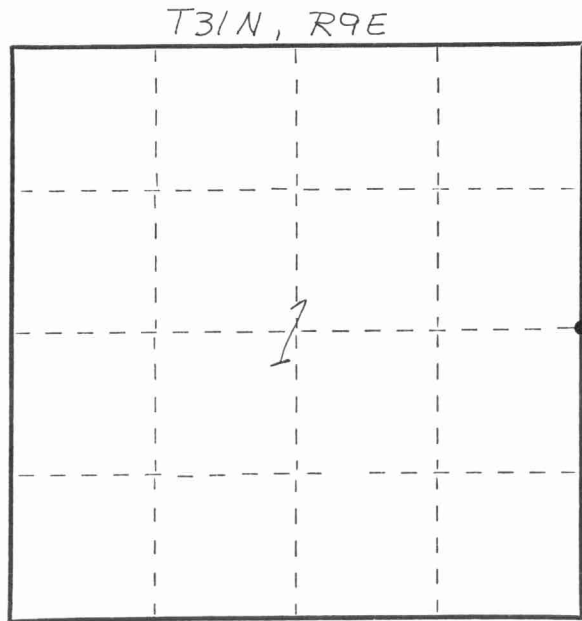
Office of Register of Deeds, County of, I hereby certify that the within instrument was filed in this office for record on the day of, 19..... at o'clock M.

(Register of Deeds)

By Deputy

FORM 985 H. C. MILLER CO., MILWAUKEE

43169012000



○ = Corner monument restored.