

4310901 0020

U.S. PUBLIC LAND SURVEY MONUMENT RECORD

(Prepared and as required by S. A-E 7.08 WI Administrative Code)

The SOUTH 1/4 corner of Section 1, T. 31 N., R. 9 E., Langlade County, WI
Corner was (check all that apply)

- Restored through acceptance of an obliterated evidence location.
- Restored through acceptance of a found perpetuated location.
- Determined to be lost and re-established through proportionate methods. (show bearings and distances to PLSS corners used for proportioning.)
- Restored/recovered/re-established in a location that differs from a previously established position. (Show difference in plan view below.)
- Check here if additional information is shown on the reverse side of this form.

Describe record evidence, recovered physical evidence, occupational evidence, testimonial evidence, and all other evidence considered in the recovery/restoration of the corner.

1860- Government Surveyor H.C. Fellows set corner in original survey.
BTs: 10" Spruce N20°E, 4 links; 10" Sugar, S40°W, 30 links.

1937- Corner re-established in 1937 resurvey.

1978- Surveyor Raymond Hallisy found witness monument (marked "1937", and "cor 15 lks. s.")
Set new BT's, and prepared and filed a tie sheet at Langlade County.

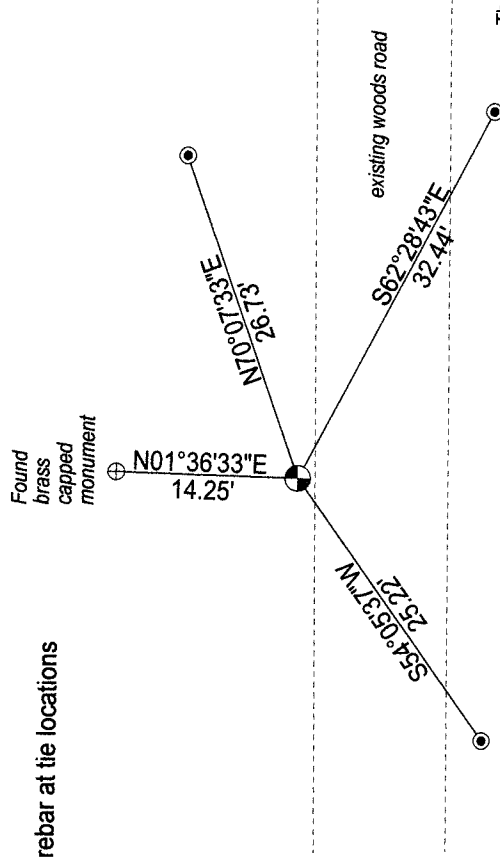
2011- I found a triangular stone at corner location 14.25' South of witness monument set in the 1930's resurvey.

Physical description of the monument set:

I accept the triangular stone as corner location, and tied it out as follows.

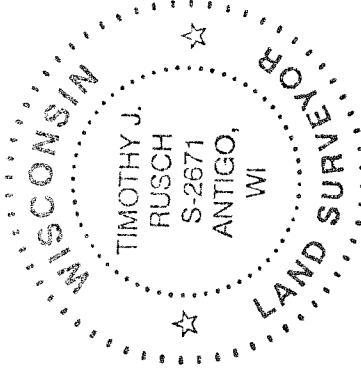
Describe the accessories used to perpetuate the location of the corner. Include a plan view drawing and indicate accessories found/set. Describe measuring point on bearing trees. Show any topographic features that would aid in future recovery of the corner.

Notes:
-Set 3/4" rebar at tie locations



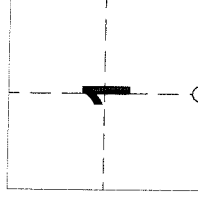
The SOUTH 1/4
Corner of Section 1
T. 31 N., R. 9 E.
Langlade County, WI

SURVEYOR'S SEAL



I, Timothy J. Rusch certify that the corner location shown on this record was determined by me or under my direction and control and that this U.S. Public Land Survey Monument Record is correct and complete to the best of my knowledge and belief.

Timothy J. Rusch 01-02-2012
Signature Date



○ = Location of corner

INDEX No. E - 23 (31-9)