

U.S. PUBLIC LAND SURVEY MONUMENT RECORD

(Prepared and as required by S. A-E 7.08 WI Administrative Code)

The Southeast corner of Section 1, T. 31 N., R. 9 E., Langlade County, WI

Corner was: (check all that apply)

- Restored through acceptance of an obliterated evidence location.
- Restored through acceptance of a found perpetuated location.
- Determined to be lost and re-established through proportionate methods.
(Show bearings and distances to PLSS corners used for proportioning.)
- Restored/recovered/reestablished in a location that differs from a previously established position. (Show difference in plan view below.)

(310901 0000)

- Check here if additional information is shown on the reverse side of this form.

Describe record evidence, recovered physical evidence, occupational evidence, testimonial evidence and all other evidence considered in the recovery/restoration of the corner.

The original corner was established in 1859 by Hiram C. Fellows. Original bearing trees: fir, 6", S80°W, 6 lks., oak, 12", N80°W, 17 lks., tamarac, 10", N82°E, 34 lks., and a maple, 8", S82°E, 20 lks. In the 1936 re-survey of part of 31-09 by Darwin Hintz & Hugh St. Claire, they described the corner as a stone with +, partly broken off. Set brass cap 20' SW in line with corner and then 91' to SW corner of school. Brass cap, stone corner and SW corner of school all in line. In 1978, Ray Hallisy, S-685, measured from N1/16 corner between 7 & 12, north, 20.26 chains. Measured 111 feet S62 1/2°W. Found hole where WC was set in 1939 resurvey. Set 1/2" x 24" rod for true corner. Set 2" IP's w/brass cap., S 62 1/2° W, 20' and N 62 1/2° E, 80'. SW corner of old school, N 62 1/2° E, 91'. 04/13/99 D. Tlusty, D. Williams found stone. approx. 3" x 5" x ? with partly broken top a part of chiseled "X" visible. Accepted stone as best evidence of corner. Found a 1/2" iron rod stuck in a 1" iron pipe 0.35' south of stone found. Set and measured ties shown below.

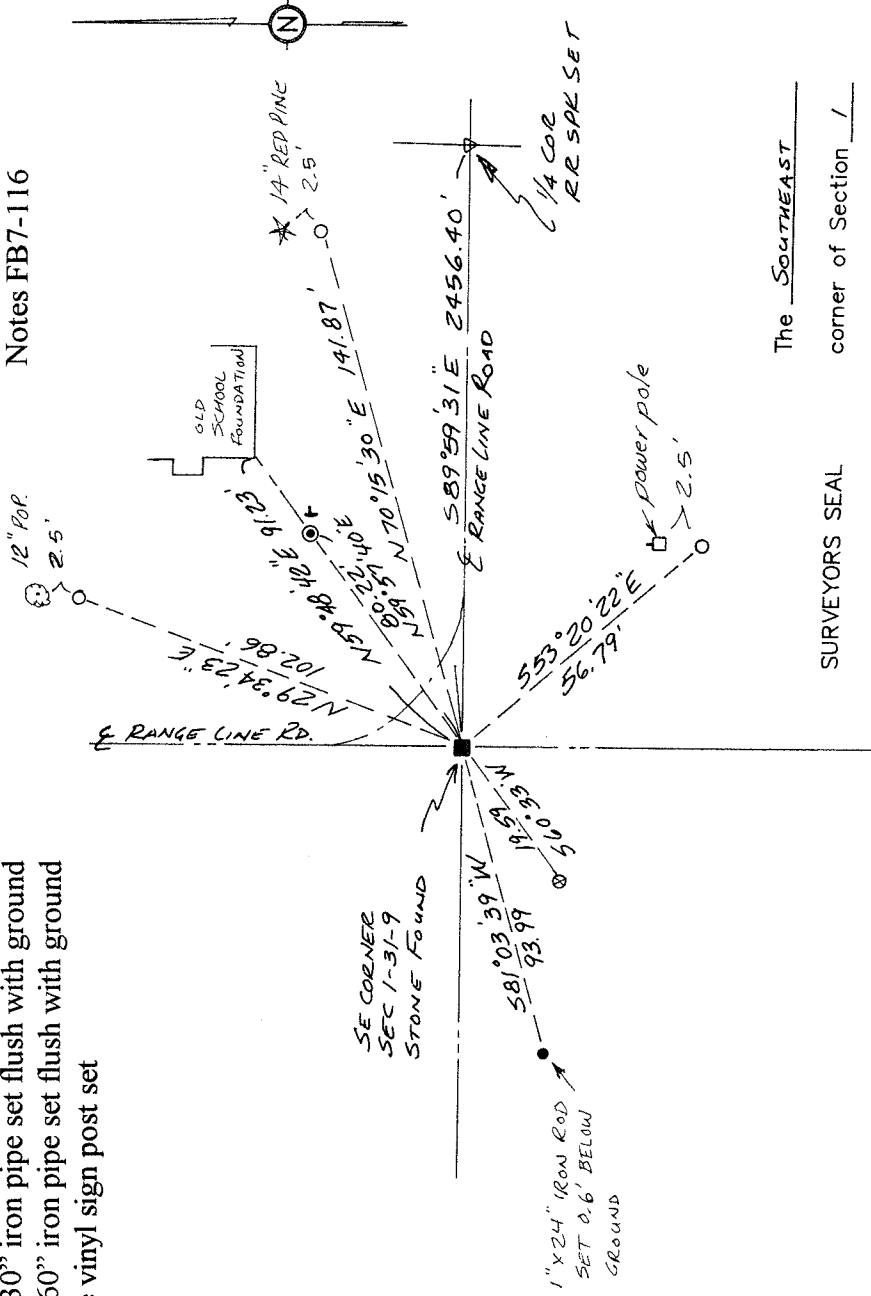
Physical description of the monument set:

For the corner, I left the existing stone monument in place.

Describe the accessories used to perpetuate the location of the corner. Include a plan view drawing and indicate accessories found/set. Describe measuring point on bearing trees. Show any topographic features that would aid in future recovery of the corner.

- = 1" x 30" iron pipe set flush with ground
- ⊗ = 1" x 60" iron pipe set flush with ground
- † = white vinyl sign post set

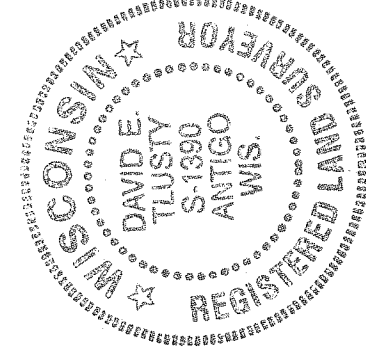
Notes FB7-116



SURVEYORS SEAL

The Southeast corner of Section 1

T. 31 N., R. 9 E.
Langlade County, WI



I, DAVID E. TLUSTY, LANGLADE COUNTY SURVEYOR, certify that the corner location shown on this record was determined by me or under my direction and control and that this U.S. Public Land Survey Monument Record is correct and complete to the best of my knowledge and belief.

David E. Tlusty 4/14/99
Signature Date

INDEX No. E-25
31-9

