

**LINCOLN COUNTY U.S. PUBLIC LAND
SURVEY MONUMENT LOCATION RECORD**

Corner Location: Section corner between 36 and 31 (Lincoln/Langlade)

Monument Type: Set 0.75" x 24" Rebar

County Coordinate: N 260,356.39 E 333,821.69

Date of Survey: 5/28/2019 Datum: WSCRS Marathon NAD 83 (2011)

Survey Party: John Jursa

Field Book: Looseleaf Hewitt Page Number: Y25

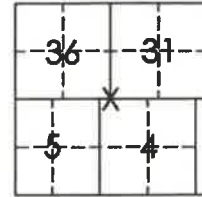
Found
Set
Re-set
Re-Tied

Section 36/31
Township 31N
Range 8E/9E

Y25

Pine River/Ackley
City, Village, Town

4310836 0000
Section



Location
(Indicated by X)



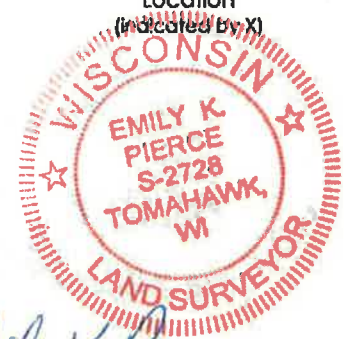
BASIS FOR MONUMENT LOCATION:

(Describe method of survey and corner authentication)

11/10/1977 - Kiedrowski dug with backhoe and found a 6" x 6" granite stone. Stone monument was lowered and a berntsen monument was set over top. Corner tied to nails and ID washers in powerpoles.

6/1/1995 - C. Nowaczyk found berntsen monument and two remaining ties. Set four additional ties.

5/28/2019 - Visited corner location and found three remaining ties in good condition. dug for corner and found a berntsen monument that was damaged and broken. This location did not fit ties from either 1995 nor 1977. Intersected ties and found a nail at the tie intersection. Removed and set a 0.75" x 24" rebar and set new ties as measured and shown below.

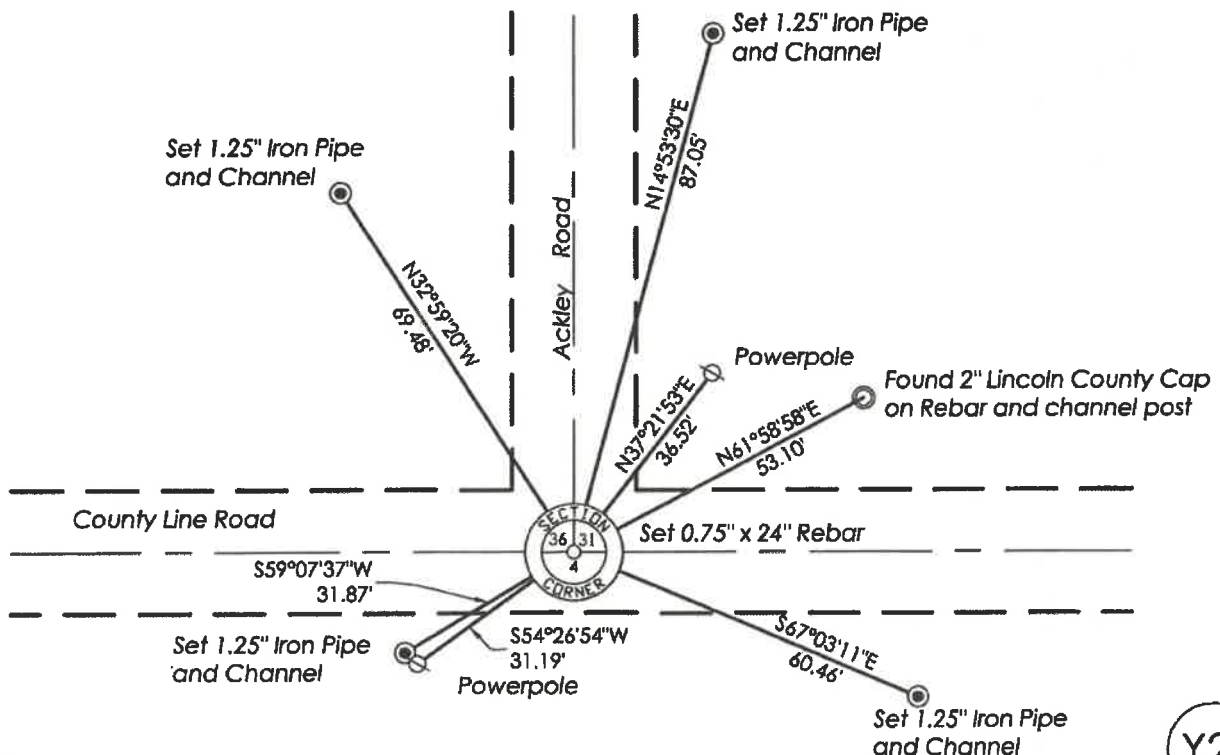


Emily K. Pierce

Emily K. Pierce, RLS-2728

Date: 5/28/2019

TIE SKETCH: Show minimum of four (4) horizontal tie distances to fixed witness monuments. Describe all monuments found or set.



Y25