

CERTIFIED LAND CORNER RESTORATION

Index No. J-1

State of Wisconsin }  
County of LANGLADE } ss.

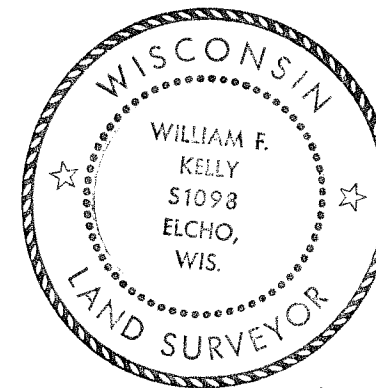
I WILLIAM F. KELLY, do hereby certify that on the 6<sup>th</sup> day of FEBRUARY, 1975, I found evidence of the SECTION corner of SECTIONS 12, 7, 13, & 18 Township 31, North, Range 8 & 9 EAST, Fourth Principal Meridian, as described hereon; and that from this evidence I established a new monument and accessories as described hereon to perpetuate the original location of this corner.

Resident witnesses:

E. DITTMAR  
\_\_\_\_\_  
\_\_\_\_\_  
\_\_\_\_\_

History of original corner establishment:

GRANITE STONE MON.  
SET IN THE 1920'S

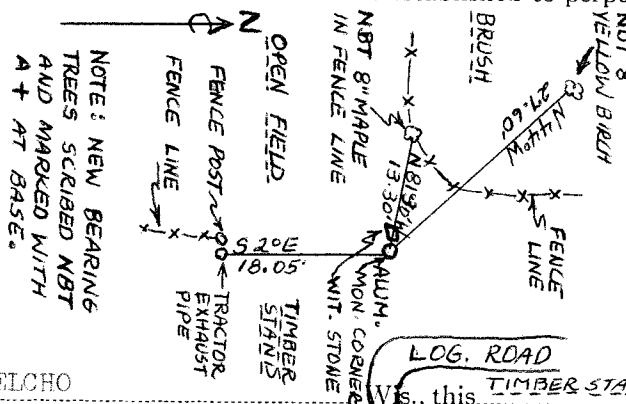


*William F. Kelly*

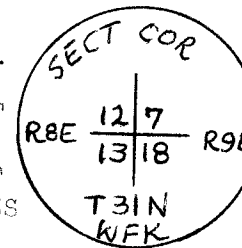
Description of corner evidence found:

LOCATED 6" x 6" GRANITE STONE LYING ON ITS SIDE. STONE HAD BEEN KNOCKED OVER BY LOGGING OPERATION. RESIDENT WITNESS IDENTIFIED ORIGINAL LOCATION OF CORNER. ALSO FOUND DEPRESSION IN GROUND INDICATING ORIGINAL CORNER LOCATION.

Description of monument and accessories I established to perpetuate the original location of this corner.

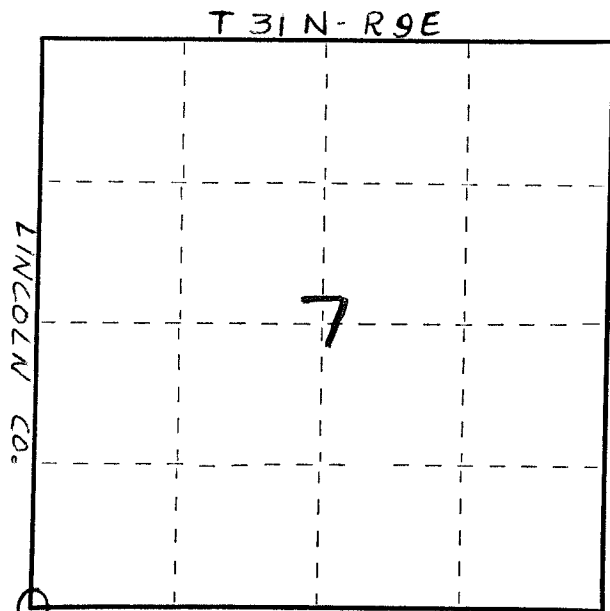


SET NEW ALUMINUM MONUMENT FLUSH WITH GROUND AS CORNER MONUMENT AND RESET GRANITE STONE AS A WITNESS CORNER. MONUMENT MARKED:



FORM 985 H. C. MILLER CO., MILWAUKEE

4310812000



○ = Corner monument restored.

LANGLADE CO.

Dated at ELCHO Wis., this TIMBER STAND day of 6<sup>th</sup> day of FEBRUARY, 1975.

Signature William F. Kelly Title REGISTERED LAND SURVEYOR Registration No. 1098  
(County Surveyor, Registered Land Surveyor, or other duly authorized official)

Office of Register of Deeds, County of \_\_\_\_\_, I hereby certify that the within instrument was filed in this office for record on the \_\_\_\_\_ day of \_\_\_\_\_, 19\_\_\_\_ at \_\_\_\_\_ o'clock \_\_\_\_\_ M.

(Register of Deeds)

By \_\_\_\_\_ Deputy