

CERTIFIED LAND CORNER RESTORATION

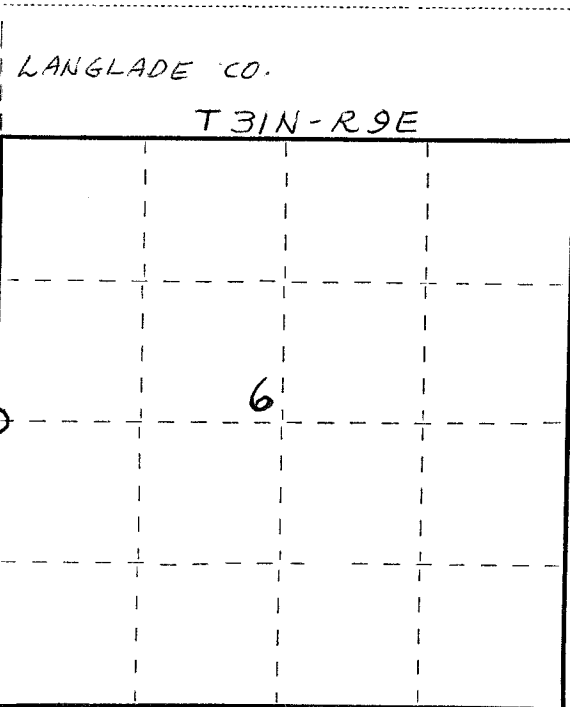
Index No. 6-1

State of Wisconsin }  
County of LANGLADE } ss.

I WILLIAM F. KELLY, do hereby certify that on the 5th day of FEBRUARY, 1925, I found evidence of the 1/4 SECTION corner of SECTIONS 1 & 6 Township 31, North, Range 8 & 9 EAST, Fourth Principal Meridian, as described hereon; and that from this evidence I established a new monument and accessories as described hereon to perpetuate the original location of this corner.

Resident witnesses:

WALTER KRAUSE



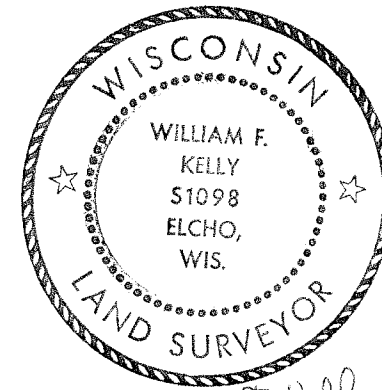
○ = Corner monument restored.

History of original corner establishment:

GRANITE STONE SET IN THE 1920'S

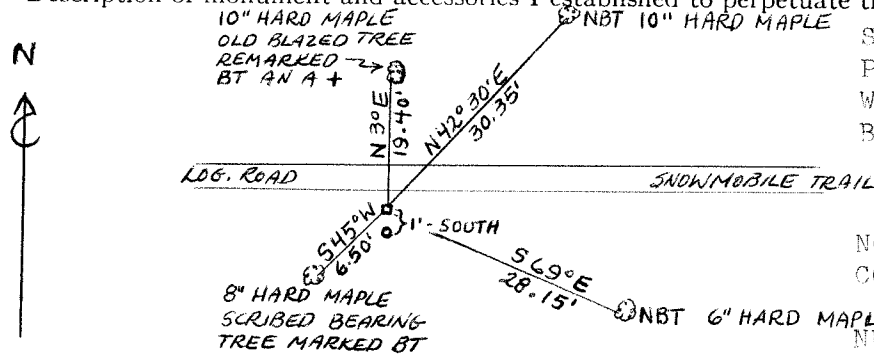
Description of corner evidence found:

LOCATED 6" SQUARE GRANITE STONE. STONE HAD DRILLED HOLE IN TOP. ALSO FOUND SCRIBED BEARING TREE.

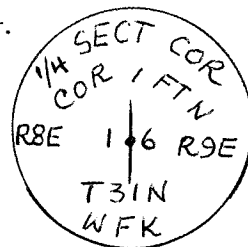


*William F. Kelly*

Description of monument and accessories I established to perpetuate the original location of this corner.



SET 2" x 36" BLACK IRON PIPE WITH BRASS CAP AS WITNESS CORNER. BRASS CAP MARKED:



NOTE: A BLAZED LINE RUNS SOUTH FROM CORNER TO THE SW CORNER SECTION 6- T. 31N. - R. 9E. NEW BEARING TREES MARKED NBT ON TRUNK WITH + AT BASE.

Dated at ELCHO, Wis., this 5th day of FEBRUARY, 1925.

Signature William F. Kelly Title REGISTERED LAND SURVEYOR Registration No. S. 1098  
(County Surveyor, Registered Land Surveyor, or other duly authorized official)

Office of Register of Deeds, County of \_\_\_\_\_, I hereby certify that the within instrument was filed in this office for record on the \_\_\_\_\_ day of \_\_\_\_\_, 19\_\_\_\_ at \_\_\_\_\_ o'clock \_\_\_\_\_ M.

(Register of Deeds)

By \_\_\_\_\_ Deputy

FORM 985 H. C. MILLER CO., MILWAUKEE

43168012000