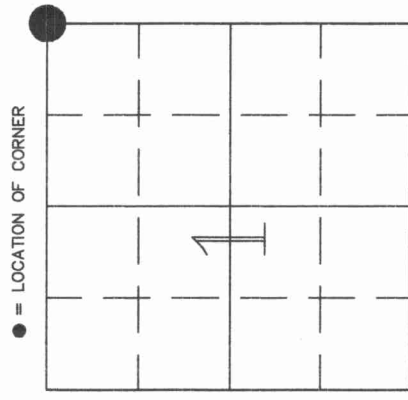


3013019000

U.S. PUBLIC LAND SURVEY MONUMENT RECORD

HISTORY OF ORIGINAL CORNER ESTABLISHMENT AND SUBSEQUENT RESTORATION AND DESCRIPTION OF ANY RECORD, MONUMENT OCCUPATIONAL, TESTIMONIAL OR OTHER EVIDENCE CONSIDERED:

NO INFORMATION ON WHO SET THE ORIGINAL CORNER ALTHOUGH THE GLO, IN 1933, REPORTS FINDING THE REMAINS OF THE ORIGINAL BEARING TREES: MAPLE S43°E 39LKS., MAPLE 18" S8°W 53 LKS. THEY ALSO SET TWO NEW BEARING TREES: HEMLOCK 16" S241/2°E 98LKS., HEMLOCK 28" S56°W 130LKS. FOR THE CORNER, THEY SET A BRASS CAP IN A CONCRETE MONUMENT "FOR THE CLOSING CORNER OF TP 30N., R 13 AND 14 E". ON 12/19/01, CHARLEY BRINKMEIER AND GERRY BAHAR FOUND THE BRASS CAP IN CONCRETE AT THE CORNER LOCATION, USED IT TO SET THE S 1/4 CORNER OF SECTION 34-31-13 TO THE EAST, AND TIED IT OUT.



SECTION 1 NORTH, RANGE 13 EAST
 TOWNSHIP 30 NORTH, RANGE 13 EAST
 TOWN OF _____
 MEMONIEE COUNTY, WISCONSIN

CORNER WAS: (CHECK ALL THAT APPLY)

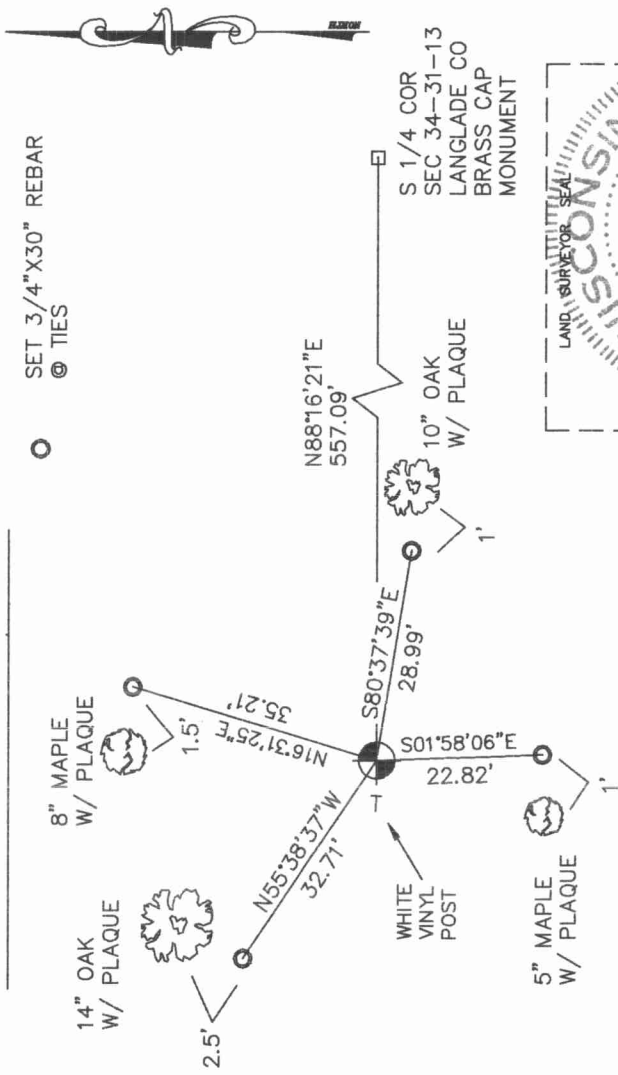
- RESTORED THROUGH ACCEPTANCE OF AN OBLITERATED EVIDENCE LOCATION
- RESTORED THROUGH ACCEPTANCE OF A FOUND PERPETUATED LOCATION
- CONSIDERED A LOST CORNER AND REESTABLISHED THROUGH LOST CORNER PROPORTIONATE METHODS (INCLUDE A PLAN VIEW DRAWING SHOWING DISTANCES AND DIRECTIONS TO OTHER PUBLIC LAND SURVEY CORNERS USED FOR PROPORTIONING AND DETERMINING THE CORNER LOCATION)
- RESTORED OR REESTABLISHED IN A LOCATION THAT DIFFERS FROM A PREVIOUS RESTORATION OR REESTABLISHMENT (INCLUDE A PLAN VIEW DRAWING AND INDICATE WHAT WAS SET AND/OR FOUND)
- CHECK IF THERE IS ADDITIONAL INFORMATION ON BACK

DESCRIBE THE MONUMENT AND ACCESSORIES USED TO PERPETUATE THE LOCATION OF THE CORNER. (INCLUDE A PLAN VIEW DRAWING AND INDICATE WHAT WAS SET AND/OR FOUND) ALSO INCLUDE FOUR TIES TO THE SECTION CORNER AND DESCRIPTION OF THE TIES.



FOUND BRASS CAP IN CONCRETE
 6" ABOVE GROUND UNDER FALLEN
 LOG (10" ASPEN) LABELED
 "U.S. GENERAL LAND OFFICE
 SURVEY 1933"

LOGGING ROAD 50' NORTH OF CORNER

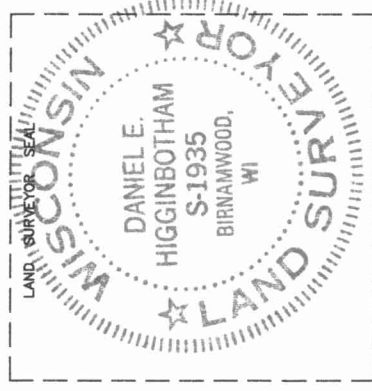


DANIEL E. HIGGINBOTHAM

(type or print name) CERTIFY THAT THE CORNER LOCATION SHOWN ON THIS RECORD WAS DETERMINED BY ME OR UNDER MY DIRECTION AND CONTROL AND THAT THIS U.S. PUBLIC LAND SURVEY MONUMENT RECORD IS CORRECT AND COMPLETE TO THE BEST OF MY KNOWLEDGE AND BELIEF.

Daniel E. Higginbotham
 SIGNATURE

3/19/02
 DATE



214-15 31-13 INDEX NO.

