

LANGLADE COUNTY U.S. PUBLIC LAND CORNER RESTORATION

The South Quarter corner of Section 36, T. 30 N., R. 12 E., Langlade County, WI.

Corner was: (check all that apply)

43012360020

- Restored through acceptance of an obliterated evidence location.
- Restored through acceptance of a found perpetuated location.
- Determined to be lost and re-established through proportionate methods.
- Show bearings and distances to PLSS corners used for proportioning, and show original distances).
- Restored/recovered/re-established in a location that differs from a previously established position.
- (Show difference in plan view below).
- Check here if additional information is shown on the reverse side of this form.

Describe record evidence, recovered physical evidence, occupational evidence, testimonial evidence and all other evidence considered in the recovery/restoration of the corner.

The original corner was established in 1853 by William J. Neely. Original bearing trees: birch, 20", N75°E, 12 links and a birch, 10", S67°W, 7 links. In 1896, Lawrence Deleglise surveyed in Section 1 but gave no distance along the North line. In 2002, I recovered a stone of record at the SW corner of Section 36 and a conc. mon. with brass cap at the SE corner of Section 36. I re-established this corner on a straight line between the SW and SE corners of Section 36 at a point in line with a long-standing fenceline to the North. Both adjoining neighbors to the north (Koeppels and Lenzner) said that this fence was always thought to be the line. The corner is in line with the center of an old town road to the West.

Physical description of the monument set:

For the corner, I set a new, 2" x 30" flared bottom, galvanized iron pipe with 3 1/4" brass cap, top of which is 0.6' below ground.

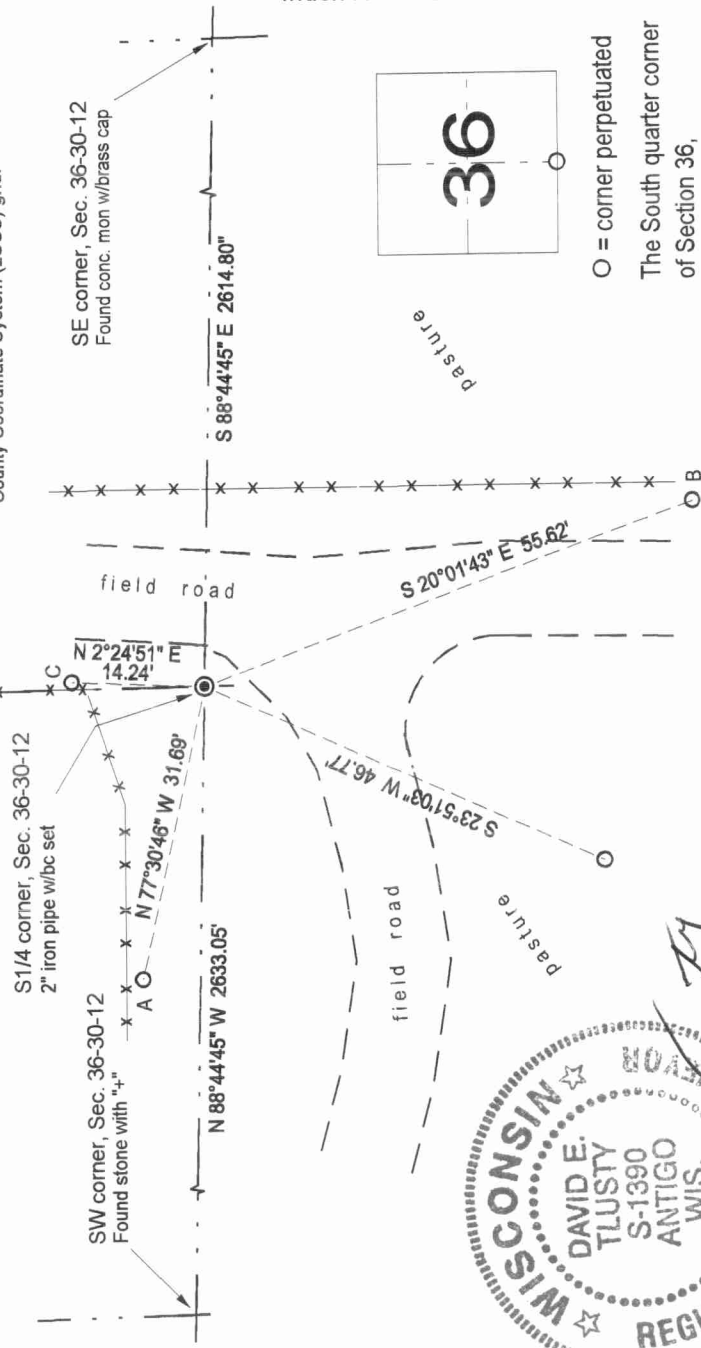
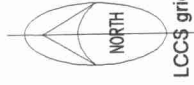
Describe the accessories used to perpetuate the corner. Include a plan view drawing and accessories found/set. Describe measuring point on bearing trees. Show any topographic features that would aid in future recovery of the corner.

- A - set 2.5' south of 2nd post west of gate.
- B - set 2.5' west of fence; 4.5' west of lone 4" cherry tree
- C - white vinyl sign post set 0.4' W of rebar

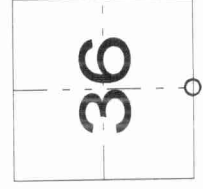
LEGEND

- 3/4" x 30" rebar set
- 2" iron pipe w/bc set
- utility pole
- Tie bearings magnetic with hand compass.
- Bearings referenced to the Langlade County Coordinate System (LCCS) grid.
- fenceline
- Bernitsen SN-1 nail set
- Set white vinyl sign post
- iron pipe found

Field book FB11-39



Index No. Z23 30-12



O = corner perpetuated
The South quarter corner of Section 36,
T. 30 N., R. 12 E.,
Langlade County, WI



I, David E. Tlusty, Registered Land Surveyor, as Langlade County Surveyor, certify that the corner location on this record was determined by me and that this U.S. Public Land Survey Monument Record is correct to the best of my knowledge and belief.