

LANGLADE COUNTY U.S. PUBLIC LAND CORNER RESTORATION

The Center of Section 35, T. 30 N., R. 12 E., Langlade County, WI.

Corner was: (check all that apply)

- Restored through acceptance of an obliterated evidence location.
- Restored through acceptance of a found perpetuated location.
- Determined to be lost and re-established through proportionate methods.
 - Show bearings and distances to PLSS corners used for proportioning, and show original distances).
- Restored/recovered/re-established in a location that differs from a previously established position.
 - (Show difference in plan view below).
- Check here if additional information is shown on the reverse side of this form.

4 3012352020

Describe record evidence, recovered physical evidence, occupational evidence, testimonial evidence and all other evidence considered in the recovery/restoration of the corner.

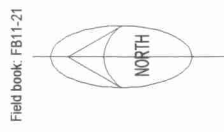
This corner was not monumented in the original government survey.
 In 1917, Hutchinson surveyed in Sec. 35 and said "S on 1/4 line from Deleglise ctr...", but didn't describe the corner.
 07/13/01 D. Tlusty, E. Tlusty. Dug at CL-CL. Down 2.6' found the top of what appears to be a piece of steel plow edge or grader blade, approx. 5" x 3/8" (length unknown) set on end and in good condition. After measuring to other points in Section 35 (see map filed), I accept this marker as the corner mentioned by Hutchinson.

Physical description of the monument set:

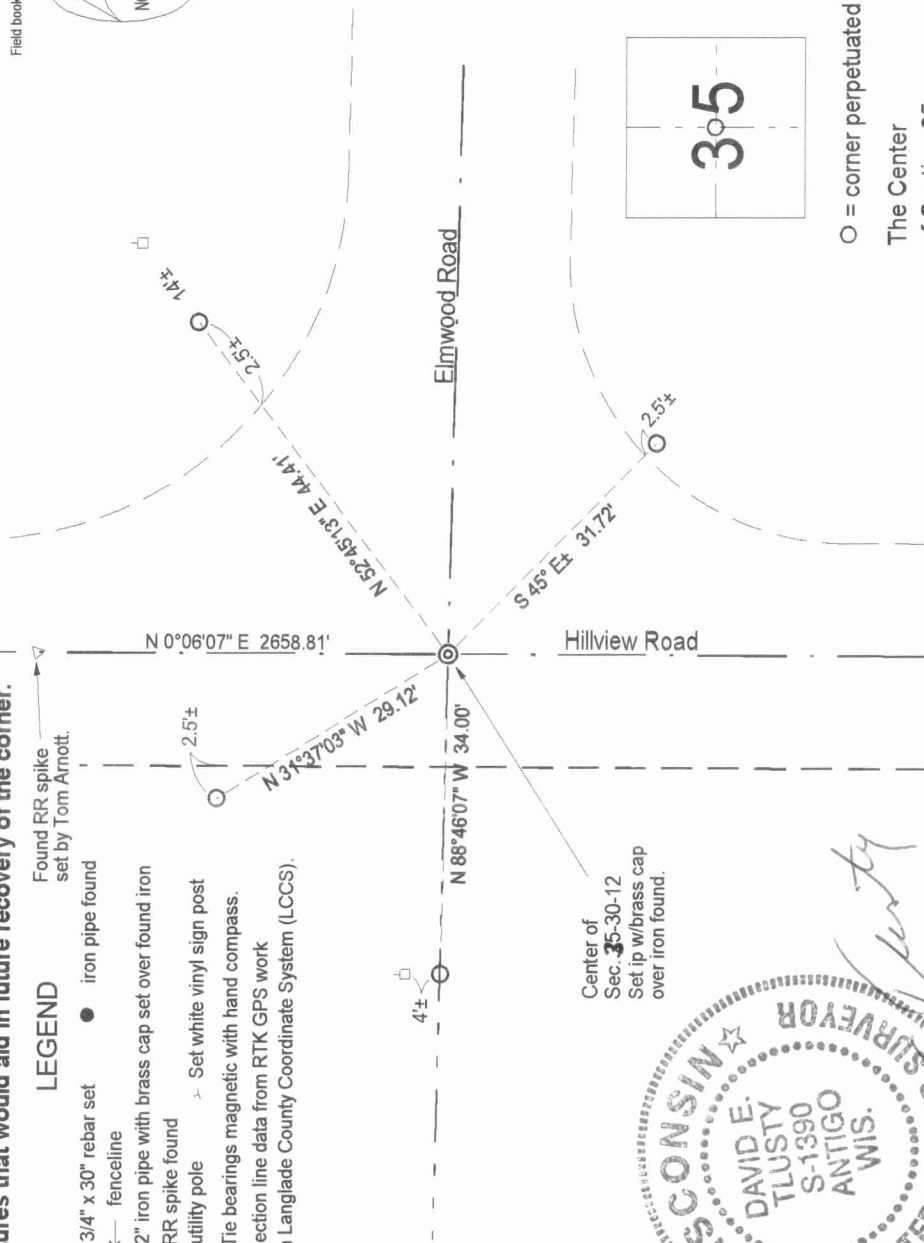
Topped the existing marker with a 2" x 30" galvanized, flared bottom iron pipe with stamped brass cap set just below the paved road surface.

Describe the accessories used to perpetuate the corner. Include a plan view drawing and accessories found/set. Describe measuring point on bearing trees. Show any topographic features that would aid in future recovery of the corner.

- LEGEND**
- 3/4" x 30" rebar set
 - fenceline
 - 2" iron pipe with brass cap set over found iron
 - RR spike found
 - utility pole
 - Set white vinyl sign post
 - Tie bearings magnetic with hand compass.
 - Section line data from RTK GPS work in Langlade County Coordinate System (LCCS).



Field book: FB11-21



Index No. X19 30-12



○ = corner perpetuated
 The Center
 of Section 35,
 T. 30 N., R. 12 E.,
 Langlade County, WI

I, David E. Tlusty, Registered Land Surveyor, as Langlade County Surveyor, certify that the corner location on this record was determined by me and that this U.S. Public Land Survey Monument Record is correct to the best of my knowledge and belief.