

LANGLADE COUNTY U.S. PUBLIC LAND CORNER RESTORATION

The South Quarter corner of Section 35, T. 30 N., R. 12 E., Langlade County, WI.

Corner was: (check all that apply)

43012350020

- Restored through acceptance of an obliterated evidence location.
- Restored through acceptance of a found perpetuated location.
- Determined to be lost and re-established through proportionate methods.
- Show bearings and distances to PLSS corners used for proportioning, and show original distances).
- Restored/recovered/re-established in a location that differs from a previously established position.
- (Show difference in plan view below).
- Check here if additional information is shown on the reverse side of this form.

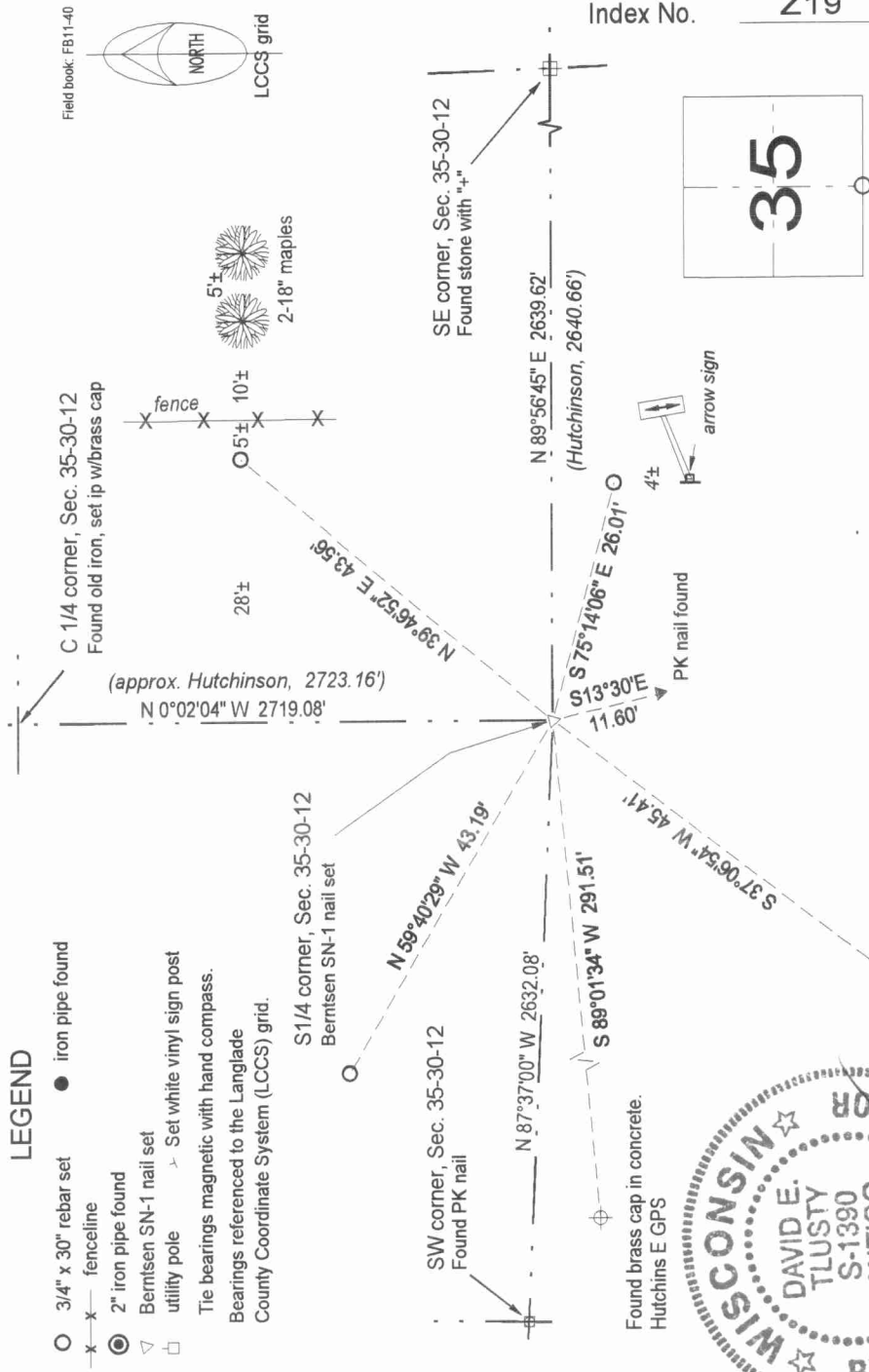
Describe record evidence, recovered physical evidence, occupational evidence, testimonial evidence and all other evidence considered in the recovery/restoration of the corner.

The original corner was established in 1853 by William J. Neely. Original bearing trees: maple, 14", N29°E, 34 links and a maple, 8", S48°W, 5 links. In June, 1918, Malcolm Hutchinson surveyed the SE 1/4 of Section 35. He ran "south on 1/4 line from Deleglise center" to south 1/4 post, stone set by L. Deleglise. Hutch. didn't measure this line, however, he measured the N-S 1/16th line (40.73 ch) in the SE 1/4 and also the East line (40.20 ch) of the SE 1/4 of Section 35. From his two given distances I extrapolated an approximate distance of 41.26 ch (2723.16') from the C1/4 to the S1/4. Hutchinson also gave a distance of 40.01 ch. from the S1/4 corner to the SE corner. To re-establish this corner: for N-S control I measured from the recovered center of Section 35, south, 1359.54' to an extension of a fenceline from the East. I then doubled this distance to the south. For E-W control, I measured 33 feet west of a north-south fenceline along the east side of Hillview Road. The resulting position appears to fit the road centerlines to the West, North and South; agrees well with Hutchinsons distance to the recovered SE corner of Section 35 and works as good to the 1/16th line fence north as Hutchinsons other distances work. I set a Berntsen SN-1 nail for the corner and measured ties as shown below.

Describe the accessories used to perpetuate the corner. Include a plan view drawing and accessories found/set. Describe measuring point on bearing trees. Show any topographic features that would aid in future recovery of the corner.

LEGEND

- 3/4" x 30" rebar set ● iron pipe found
 - x-x fenceline
 - ⊙ 2" iron pipe found
 - ▽ Berntsen SN-1 nail set
 - utility pole → Set white vinyl sign post
 - Tie bearings magnetic with hand compass.
- Bearings referenced to the Langlade County Coordinate System (LCCS) grid.

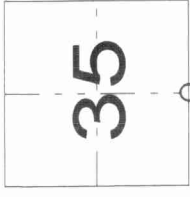


Found brass cap in concrete.
Hutchins E GPS



I, David E. Tlusty, Registered Land Surveyor, as Langlade County Surveyor, certify that the corner location on this record was determined by me and that this U.S. Public Land Survey Monument Record is correct to the best of my knowledge and belief.

Index No. Z19 30-12



○ = corner perpetuated
The South quarter corner of Section 35,
T. 30 N., R. 12 E.,
Langlade County, WI