

LANGLADE COUNTY U.S. PUBLIC LAND CORNER RESTORATION

The Southeast corner of Section 35, T. 30 N., R. 12 E., Langlade County, WI.

Corner was: (check all that apply)

43012350000

- Restored through acceptance of an obliterated evidence location.
- Restored through acceptance of a found perpetuated location.
- Determined to be lost and re-established through proportionate methods.
- Show bearings and distances to PLSS corners used for proportioning, and show original distances).
- Restored/recovered/re-established in a location that differs from a previously established position.
- (Show difference in plan view below).
- Check here if additional information is shown on the reverse side of this form.

Describe record evidence, recovered physical evidence, occupational evidence, testimonial evidence and all other evidence considered in the recovery/restoration of the corner.

The original corner was established in 1853 by William J. Neely. Original bearing trees: maple, 12", N60°W, 29 links; a maple, 14", S56°W, 14 links; an ironwood, 9", N31°E, 33 links and a lind, 14", S40°E, 16 links. In June, 1918, Malcolm Hutchinson found "one orig. B. T. and old stake set stone 8 x 12 x 20 + on top". From this corner, he measured distances of 2640.66' to the 1/4 corner West and 2653.2' to the 1/4 corner North. 11/08/02 D. Tlusty found 8" x 12" stone with chiseled "+" on top. Top portion with "+" is triangular shaped with approx. 6" sides. Top of stone is 0.2' below ground. Accepted stone found as the stone set by Hutchinson and as the best evidence of the original corner location. Corner is in the center of an old east-west roadbed and approximately in line with an old fence to the south.

Physical description of the monument set:

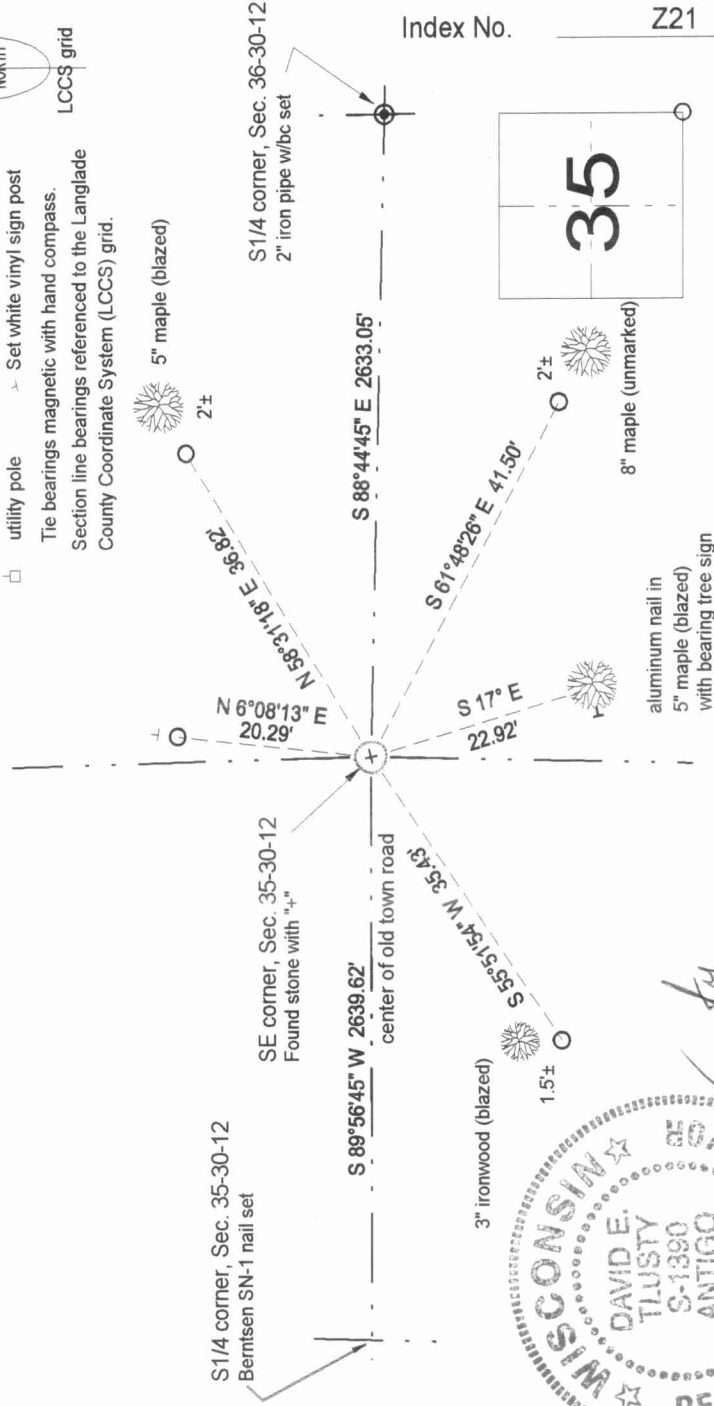
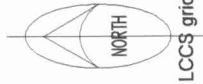
Left existing stone in place. To help find the stone in the future, I set a 1" x 14" iron pipe on the east edge of stone, 0.5' below top, and 0.18' East of + on the stone.

Describe the accessories used to perpetuate the corner. Include a plan view drawing and accessories found/set. Describe measuring point on bearing trees. Show any topographic features that would aid in future recovery of the corner.

LEGEND

- 3/4" x 30" rebar set
- 2" iron pipe w/bc set
- Berntsen SN-1 nail set
- utility pole
- Set white vinyl sign post
- Tie bearings magnetic with hand compass.
- Section line bearings referenced to the Langlade County Coordinate System (LCCS) grid.
- iron pipe found
- fenceline
- Berntsen SN-1 nail set
- Set white vinyl sign post
- Tie bearings magnetic with hand compass.
- Section line bearings referenced to the Langlade County Coordinate System (LCCS) grid.

Field book: FB11-38



Index No. Z21 30-12



I, David E. Tlusty, Registered Land Surveyor, as Langlade County Surveyor, certify that the corner location on this record was determined by me and that this U.S. Public Land Survey Monument Record is correct to the best of my knowledge and belief.

○ = corner perpetuated
The Southeast corner of Section 35,
T. 30 N., R. 12 E.,
Langlade County, WI