

4301234 2020 2014

U.S. PUBLIC LAND SURVEY MONUMENT RECORD

(Prepared and as required by S. A-E 7.08 WI Administrative Code)

The CENTER 1/4 corner of Section 34, T. 30 N., R. 12 E., Langlade County, WI
Corner was (check all that apply)

- Restored through acceptance of an obliterated evidence location.
- Restored through acceptance of a found perpetuated location.
- Determined to be lost and re-established through proportionate methods. (show bearings and distances to PLSS corners used for proportioning.)
- Restored/recovered/re-established in a location that differs from a previously established position. (Show difference in plan view below.)
- Check here if additional information is shown on the reverse side of this form.

Describe record evidence, recovered physical evidence, occupational evidence, testimonial evidence, and all other evidence considered in the recovery/restoration of the corner.

This corner was not set as part of the original GLO survey.

1969 - Poss calls "corner obliterated in road construction." He set corner at intersection of fences per resident witness Roland Jansen. Poss set two witness corners, and numerous ties, and prepared a tie sheet with Langlade County.

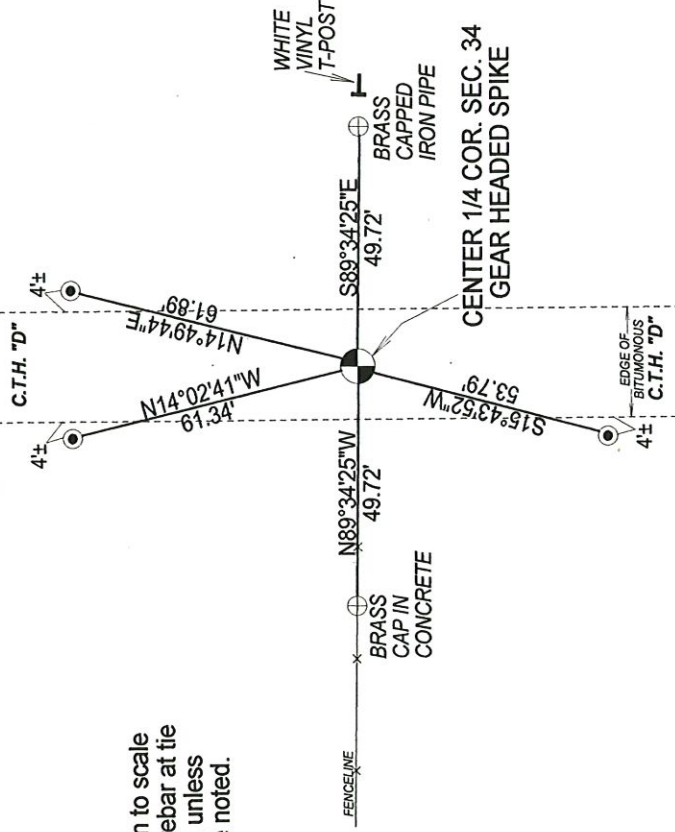
2014 - I found the two brass capped monuments referenced by Poss at the Center 1/4 corner location. I reset Center 1/4 corner from said ties. Corner location falls at intersection of fence from the west and centerline of C. T. H. "D".

Physical description of the monument set:

I set a gear headed spike as the corner location, and tied it out as follows.

Describe the accessories used to perpetuate the location of the corner. Include a plan view drawing and indicate accessories found/set. Describe measuring point on bearing trees. Show any topographic features that would aid in future recovery of the corner.

- Not drawn to scale
- Set 3/4" rebar at tie locations, unless otherwise noted.



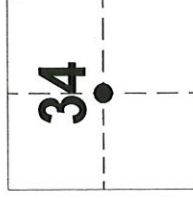
The CENTER 1/4
Corner of Section 34
T. 30 N., R. 12 E.
Langlade County, WI

SURVEYOR'S SEAL



I, Timothy J. Rusch, certify that the corner location shown on this record was determined by me or under my direction and control and that this U.S. Public Land Survey Monument Record is correct and complete to the best of my knowledge and belief.

Timothy J. Rusch 08/24/2014
Signature Date



● = Location of corner

CERTIFIED LAND CORNER RESTORATION

30-12
Index No. X-15

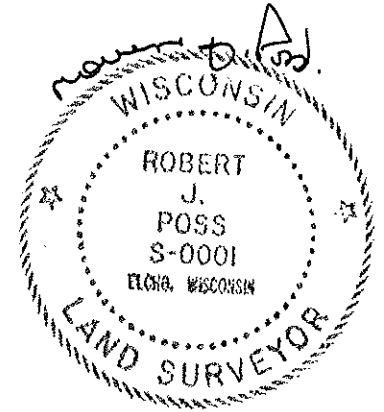
State of Wisconsin }
County of LANGLADE } ss.

History of original corner establishment:

I ROBERT J. POSS, do hereby certify that on the 28TH day of JUNE, 1969, I found evidence of the 1/4 POST - CENTER corner of SEC. 34 Township 30, North, Range 12 EAST, Fourth, Principal Meridian, as described hereon; and that from this evidence I established a new monument and accessories as described hereon to perpetuate the original location of this corner.

Description of corner evidence found:

CORNER OBLITERATED IN ROAD CONSTRUCTION
JANSEN (2ND GENERATION OWNER) STATES
FENCES WERE ON LINE.



Resident witnesses:

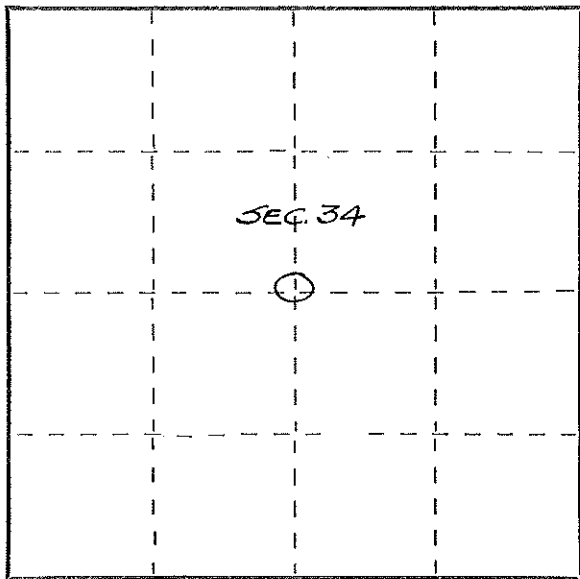
ROLAND JANSEN

Description of monument and accessories I established to perpetuate the original location of this corner.

SET \odot BRASS CAP IN CONCRETE MKD WIT. COR
CTR. SEC. 34
SET \odot 1/2" IRON PIPE MKD AS ABOVE 50 FT EAST TO COR
EXCEPT - 50 FT. WEST TO COR T30N R12E
FROM B: POWR POLE WPL Y
3= OLD MAPLE SCARS 30-12-34
ROTTING S0/2 E 25.8
4 TWIN ELMS 16' 18" 25/27 N21E 45.8 CULT
S24 1/2 W 62.0 7
5 Y. BIRCH S37 1/2 W 79.0 6
6 TRIPLE H. MAPLE 20" S52W 82.5 5 3 4 3
7. R. ELM. S74W 99.5 3
THESE TREES NOT BLAZED.

FROM A: TEL POLE N27 1/2 W 48.75
1. ROCK ELM 16" ON FENCE LINE S. S
2. TWIN MAPLES 20" S40E 14.6
TREES BLAZED & SCRIBED.

CTY TR. HWY D
A CULT
WOODED
FENCE DOWN HOLES STILL IN



Dated at ELONG, Wis., this 28TH day of JUNE, 1969.

Signature Robert J. Poss Title REG. LAND SURVEYOR Registration No. S-0001
(County Surveyor, Registered Land Surveyor, or other duly authorized official)

Office of Register of Deeds, County of _____, I hereby certify that the within instrument was filed in this office for record on the _____ day of _____, 19____ at _____ o'clock _____ M.

(Register of Deeds)

By _____ Deputy

\odot = Corner monument restored.

43012347000

FORM 985 H. C. MILLER CO., MILWAUKEE