

4 3012 34 0020

U.S. PUBLIC LAND SURVEY MONUMENT RECORD

(Prepared and as required by S. A-E 7.08 WI Administrative Code)

The SOUTH 1/4 corner of Section 34 T. 30 N., R. 12 E., Langlade County, WI
Corner was (check all that apply)

- Restored through acceptance of an obliterated evidence location.
- Restored through acceptance of a found perpetuated location.
- Determined to be lost and re-established through proportionate methods. (show bearings and distances to PLSS corners used for proportioning.)
- Restored/recovered/re-established in a location that differs from a previously established position. (Show difference in plan view below.)
- Check here if additional information is shown on the reverse side of this form.

Describe record evidence, recovered physical evidence, occupational evidence, testimonial evidence, and all other evidence considered in the recovery/restoration of the corner.

1853 - Original corner established by W.J. Neely - bearing trees: Ironwood, 8", N36°W, 19 links and a Maple, 10", S65°E, 31 links.

1990 - William Kelly set a PK nail over an existing iron under road.

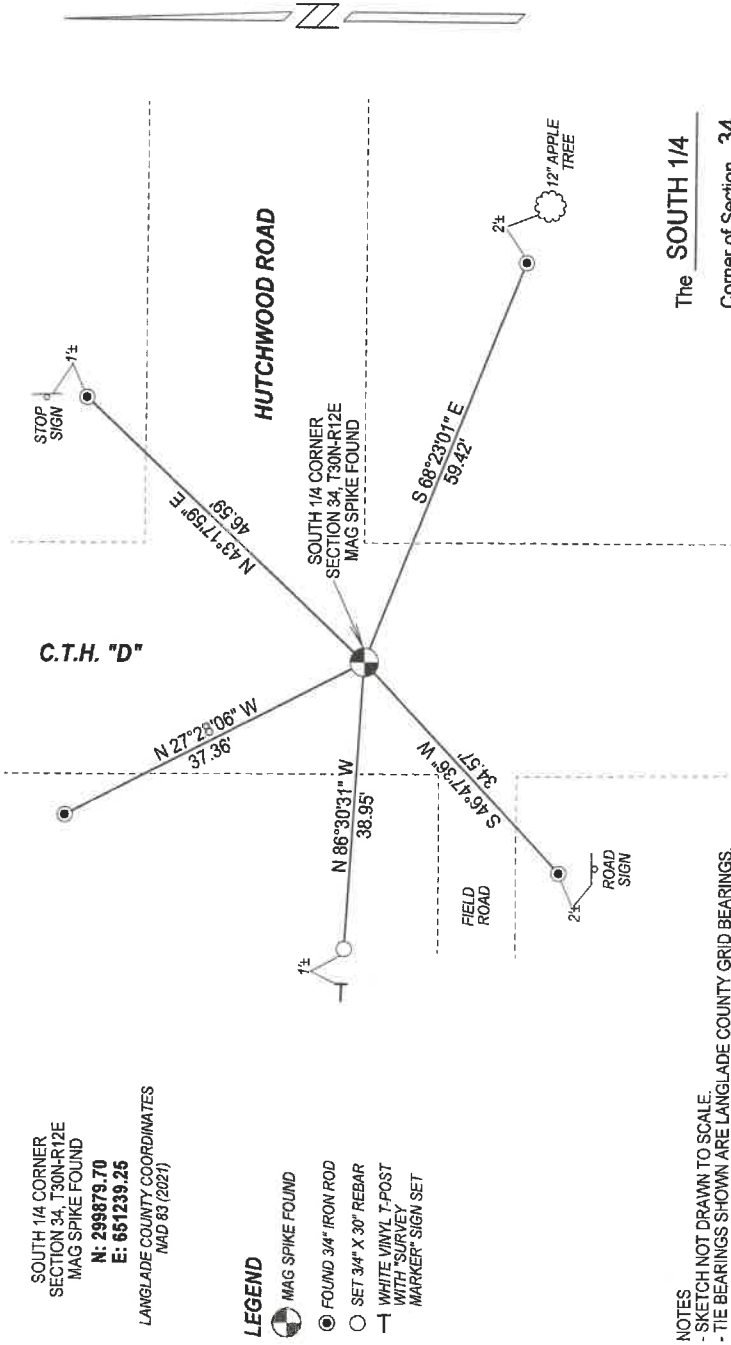
2018 - David Yurk set a 3" magnetic nail at corner location.

2022 - Found existing mag spike at corner location and ties set by Yurk.

Physical description of the monument set:

Found existing mag spike at corner location and tied out as shown below.

Describe the accessories used to perpetuate the location of the corner. Include a plan view drawing and indicate accessories found/set. Describe measuring point on bearing trees. Show any topographic features that would aid in future recovery of the corner.



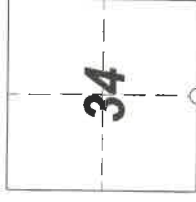
SOUTH 1/4 CORNER
SECTION 34, T30N-R12E
MAG SPIKE FOUND
N: 299879.70
E: 651239.25
LANGLADE COUNTY COORDINATES
NAD 83 (2011)

LEGEND

- MAG SPIKE FOUND
- FOUND 3/4" IRON ROD
- SET 3/4" X 30" REBAR
- WHITE VINYL T-POST WITH SURVEY MARKER SIGN SET

NOTES
- SKETCH NOT DRAWN TO SCALE.
- TIE BEARINGS SHOWN ARE LANGLADE COUNTY GRID BEARINGS.
- ALL TIES MEASURED ELECTRONICALLY WITH TOTAL STATION.

The SOUTH 1/4
Corner of Section 34
T. 30 N., R. 12 E.
Langlade County, WI



○ = Location of corner



I, Michael J. Hoffman, certify that the corner location shown on this record was determined by me or under my direction and control and that this U.S. Public Land Survey Monument Record is correct and complete to the best of my knowledge and belief.

Michael J. Hoffman 12/12/2022
Signature Date

INDEX No. Z - 15

4 30 12 34 00 20

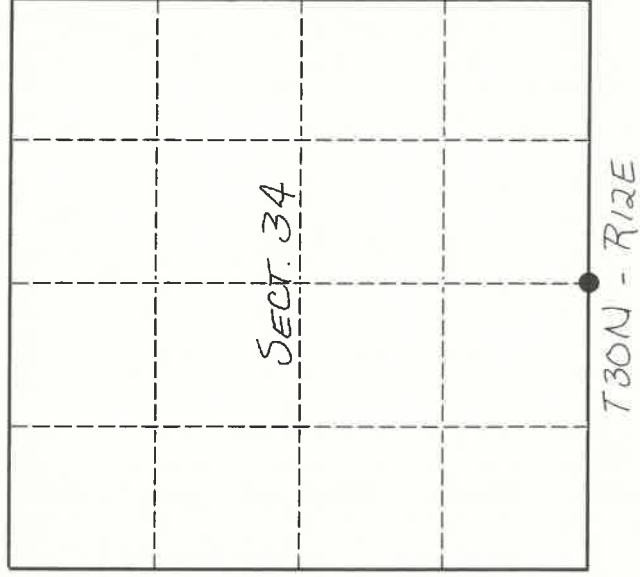
U. S. PUBLIC LAND SURVEY MONUMENT RECORD

INSTRUCTIONS:

This record shall show the location of the corner and shall include all of the following nine elements (a through i).

- (a) Identify the corner by reference to the U.S. public land survey system.
- = Corner monument restored.

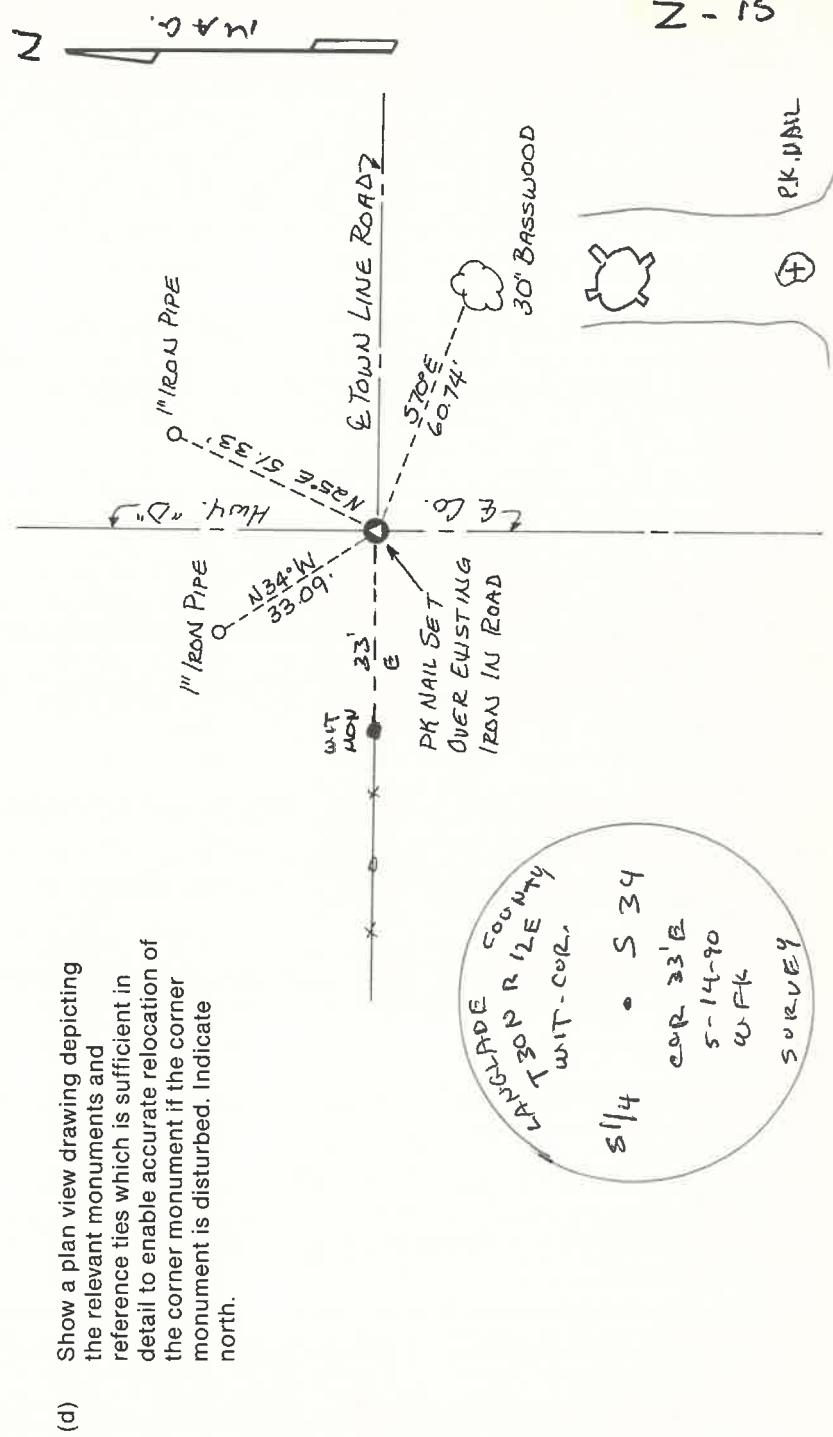
ORIGINAL CORNER ESTABLISHED BY JAMES WITHROW IN 1854.



- (b) Describe any record evidence, monument evidence, occupational evidence, testimonial evidence or any other material evidence you considered, and whether the monument was found or placed.

SET PK NAIL OVER EXISTING IRON UNDER ROAD SURFACE.

- (c) In the plan view drawing below, provide reference ties to at least 4 witness monuments, or, if the location is within a municipality, to at least 2 witness monuments. (Witness monuments shall be made of concrete, natural stone, iron or other equally durable material.) Describe witness monuments.



8/14 • S 34
 COR 33'E
 5-14-90
 WFK
 SURVEY

LARSHADE COUNTY
 T30N R12E
 WIT-COR.

43012340020

Describe any material discrepancy between the location of the corner as restored or reestablished and the location of that corner as previously restored or reestablished by distance and direction. Show the discrepancy on the plan view drawing under (d), above. Show the distances between the corner as previously restored or reestablished and (1) the corner as restored or reestablished, and (2) to at least 2 of the witness monuments shown on the drawing in (d), above.

NONE

(f) Was the corner restored through acceptance of (1) an obliterated evidence location, or, (2) a found perpetuated location?
(2)

(g & h) Was the corner reestablished through lost corner proportionate methods? If so, show the method, including the directions and distances to other public land survey corners used as evidence or used for proportioning in determining the corner location.
No

(i) I, WILLIAM F. KELLY (type or print name) R.L.S. 1098

certify that the corner location shown on this record was determined by me or under my direction and control and that this U.S. Public Land Survey Monument Record is correct and complete to the best of my knowledge and belief.

William F. Kelly
Signature

3-29-90
Date

