

LANGLADE COUNTY U.S. PUBLIC LAND CORNER RESTORATION

The East Quarter corner of Section 33, T. 30 N., R. 12 E., Langlade County, WI.

Corner was: (check all that apply)

43012332000

- Restored through acceptance of an obliterated evidence location.
- Restored through acceptance of a found perpetuated location.
- Determined to be lost and re-established through proportionate methods.
- Show bearings and distances to PLSS corners used for proportioning, and show original distances).
- Restored/recovered/re-established in a location that differs from a previously established position.
- (Show difference in plan view below).
- Check here if additional information is shown on the reverse side of this form.

Describe record evidence, recovered physical evidence, occupational evidence, testimonial evidence and all other evidence considered in the recovery/restoration of the corner.

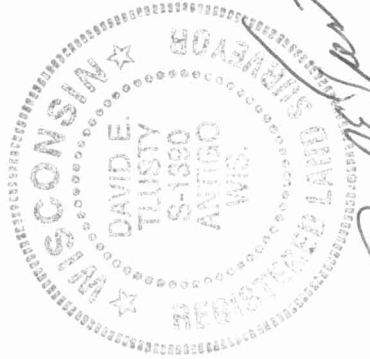
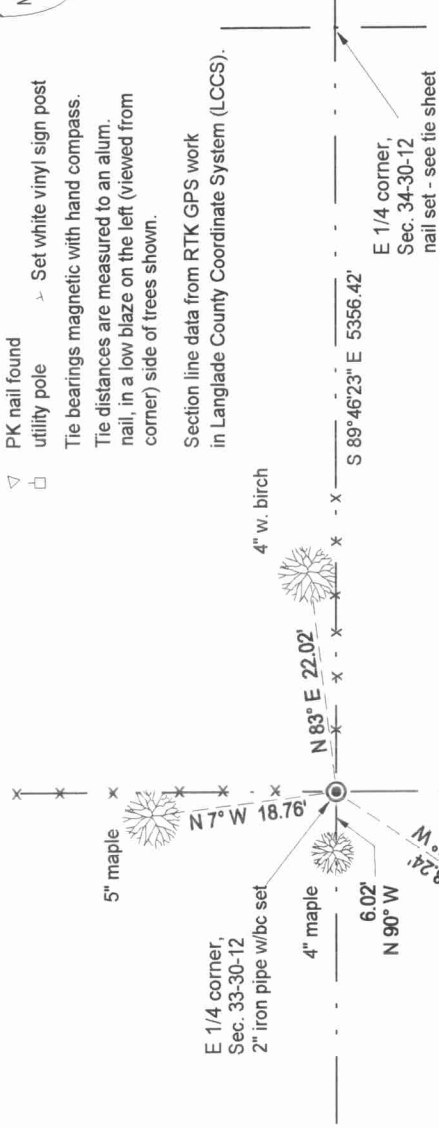
The original corner was established in 1854 by James Withrow. Original bearing trees: elm, 18", S72°E, 25 links and an ironwood, 10", S64.5°W, 23 links. Hutchinson (year unknown) surveyed in Section 33 and described this corner as " 1/4 post (Deleglise) elm, 20", S57°W, 43.5 links". He measured the E-W 1/4 line in Section 33 as 5381 feet. 08/14/01 D. Tlusty, E. Tlusty found old corner fence post hole (fences N and E) and found very rotten stump SW that would fit the one that Hutchinson described. I also measured 5384' to the center of the north-south town road near the W1/4 corner of Sec. 33. This distance works good with Hutch's. I accept the fence corner as the best evidence of the original corner location.

Physical description of the monument set:

I set a 2" x30" galvanized, flared bottom iron pipe with brass cap for the corner.
Set a white vinyl sign post 0.7' north of the corner monument.

Describe the accessories used to perpetuate the corner. Include a plan view drawing and accessories found/set. Describe measuring point on bearing trees. Show any topographic features that would aid in future recovery of the corner.

- Field book: FB11-34
- 3/4" x 30" rebar set
 - iron pipe found
 - x-x- fenceline
 - ⊙ 2" iron pipe w/bc set
 - ▽ PK nail found
 - ⊥ utility pole
 - Set white vinyl sign post
- Tie bearings magnetic with hand compass.
Tie distances are measured to an alum. nail, in a low blaze on the left (viewed from corner) side of trees shown.

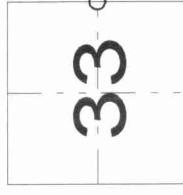


I, David E. Tlusty, Registered Land Surveyor, as Langlade County Surveyor, certify that the corner location on this record was determined by me and that this U.S. Public Land Survey Monument Record is correct to the best of my knowledge and belief.

David E. Tlusty
4/13/02

Index No. _____

X13 30-12



○ = corner perpetuated
The East Quarter corner of Section 33,
T. 30 N., R. 12 E.,
Langlade County, WI