

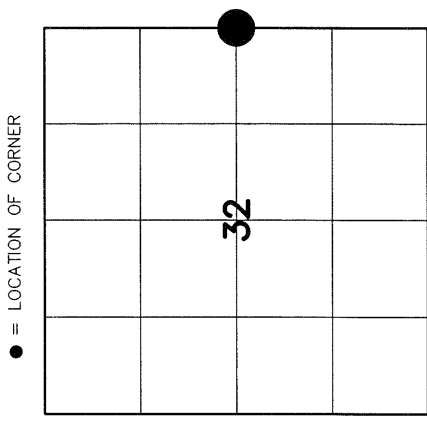
4301232 2000

U.S. PUBLIC LAND SURVEY MONUMENT RECORD

HISTORY OF ORIGINAL CORNER ESTABLISHMENT AND SUBSEQUENT RESTORATION AND DESCRIPTION OF ANY RECORD, MONUMENT OCCUPATIONAL, TESTIMONIAL OR OTHER EVIDENCE CONSIDERED:

THE ORIGINAL CORNER WAS SET BY J. WITHROW IN 1854.
 THE ORIGINAL BEARING TREES WERE:
 15" PINE S31.5°E - 44 LINKS
 12" PINE N69°W - 14 LINKS

BROOKS SURVEYED THE EAST - WEST 1/4 LINE IN 1906. HE HAD A DISTANCE OF 76.72 CHAINS (5063.52'). WE LOCATED THE FENCE AND THE CENTERLINE OF MAPLE ROAD. SEARCHING FOR ANY EVIDENCE WE FOUND A 60D NAIL SET BELOW THE PAVEMENT. OUR DISTANCE ON THE EAST - WEST 1/4 LINE WAS 5099.23'. WE ACCEPTED THIS LOCATION AS THE EAST 1/4 CORNER OF SECTION 32.

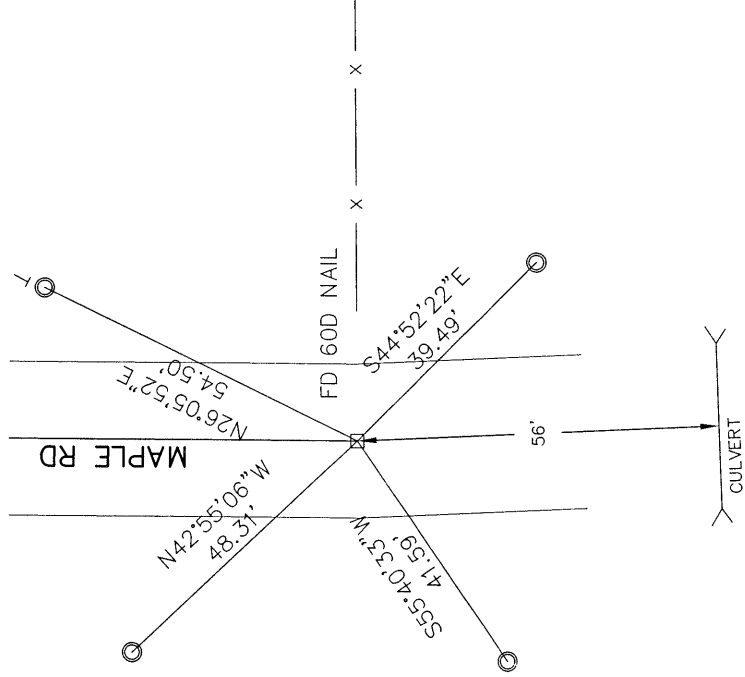


SECTION 32
 TOWNSHIP 30 NORTH, RANGE 12 EAST
 TOWN OF NORWOOD
LANGLADE COUNTY, WISCONSIN

CORNER WAS: (CHECK ALL THAT APPLY)

- RESTORED THROUGH ACCEPTANCE OF AN OBLITERATED EVIDENCE LOCATION
- RESTORED THROUGH ACCEPTANCE OF A FOUND PERPETUATED LOCATION
- CONSIDERED A LOST CORNER AND REESTABLISHED THROUGH LOST CORNER PROPORTIONATE METHODS (INCLUDE A PLAN VIEW DRAWING SHOWING DISTANCES AND DIRECTIONS TO OTHER PUBLIC LAND SURVEY CORNERS USED FOR PROPORTIONING AND DETERMINING THE CORNER LOCATION)
- RESTORED OR REESTABLISHED IN A LOCATION THAT DIFFERS FROM A PREVIOUS RESTORATION OR REESTABLISHMENT (INCLUDE A PLAN VIEW DRAWING AND INDICATE WHAT WAS SET AND/OR FOUND)
- CHECK IF THERE IS ADDITIONAL INFORMATION ON BACK

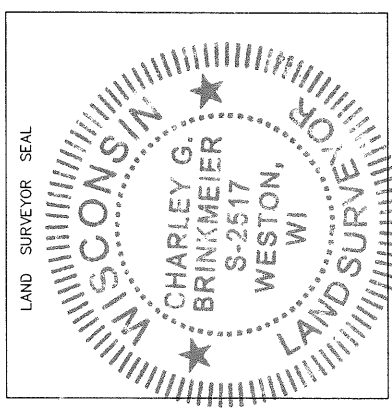
DESCRIBE THE MONUMENT AND ACCESSORIES USED TO PERPETUATE THE LOCATION OF THE CORNER (INCLUDE A PLAN VIEW DRAWING AND INDICATE WHAT WAS SET AND/OR FOUND) ALSO INCLUDE FOUR TIES TO THE SECTION CORNER AND DESCRIPTION OF THE TIES.



SET 3/4" x 24" I. PIPE
 AT ALL TIE LOCATIONS



BEARINGS ARE REFERENCED
 TO THE LANGLADE CO.
 COORDINATE SYSTEM



CHARLEY G. BRINKMEIER

(Type or print name) CERTIFY THAT THE CORNER LOCATION SHOWN ON THIS RECORD WAS DETERMINED BY ME OR UNDER MY DIRECTION AND CONTROL AND THAT THIS U.S. PUBLIC LAND SURVEY MONUMENT RECORD IS CORRECT AND COMPLETE TO THE BEST OF MY KNOWLEDGE AND BELIEF.

SIGNATURE Charley G. Brinkmeier DATE 4-12-10

INDEX NO. X9 30-12