

4301232 0000 2016

# SHAWANO COUNTY U.S. PUBLIC LAND SURVEY MONUMENT LOCATION RECORD

SECTION 5  
TOWNSHIP 29N  
RANGE 12E

5

NO.

LANDMARK       BENCHMARK \_\_\_\_\_  
CORNER IDENTITY: 3" Magnetic Nail

FOUND   
SET   
RESET   
RE-TIED

Hutchins  
CITY, VILLAGE, TOWN

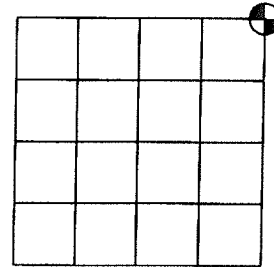
SHAWANO COUNTY COORDINATE: N: 362554.429  
E: 742731.079

ELEVATION-(FEET): \_\_\_\_\_ DATUM: NAD 83 (1991)

WEATHER: Sunny

DATE OF SURVEY: 6-1-2016 TEMPERATURE: 70 °F

SURVEY PARTY: David Yurk & Blake Schuebel



LOCATION



## BASIS FOR MONUMENT LOCATION:

(DESCRIBE METHOD OF SURVEY AND CORNER AUTHENTICATION)

On June 9, 1989, R.W. Nordin searched for a corner at this location and found nothing. Nordin set a Shawano County Monument at the intersection of the centerlines of Maple and Evergreen Roads. During inspection of this corner, no evidence of a corner or its ties were found. I verified the corner location to adjacent section corners and set a 3" magnetic nail at the corner and tied off as shown below.



CERTIFIED CORRECT:

*David A. Yurk*

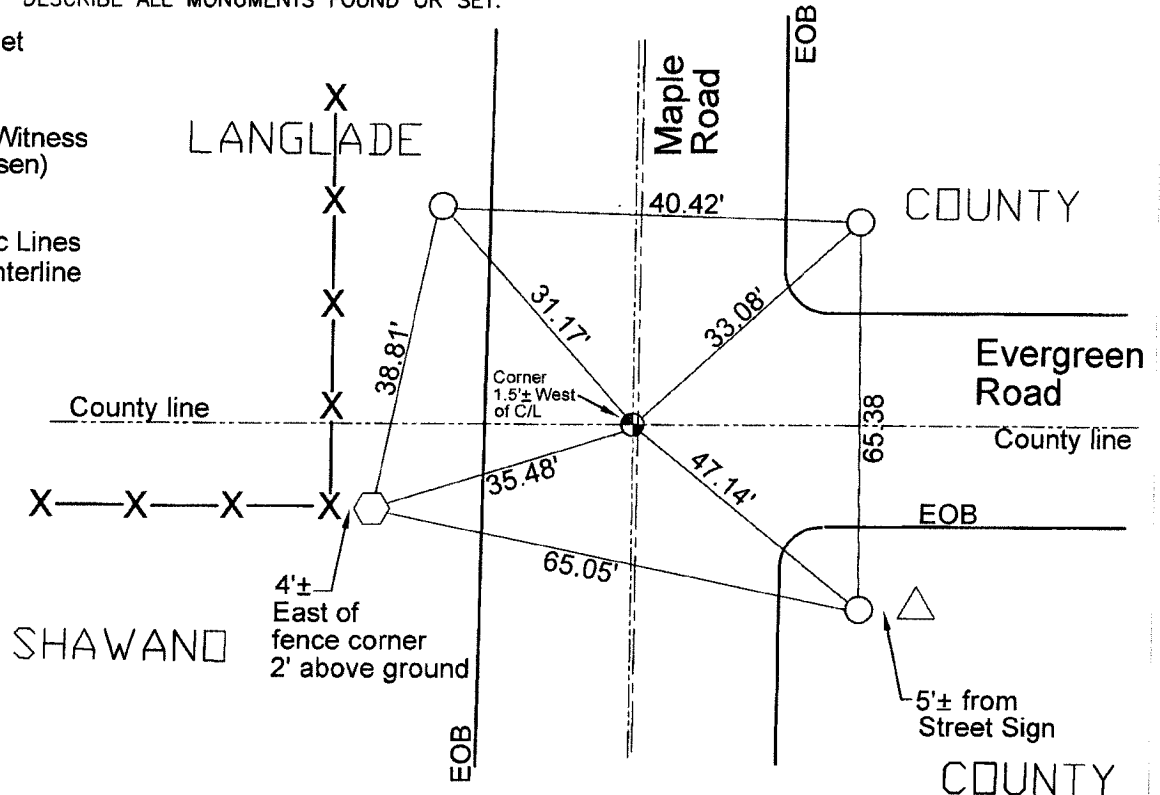
David A. Yurk PLS #2648

Professional Land Surveyor

DATE: 6-8-2016

## TIE SKETCH: SHOW MINIMUM OF FOUR (4) HORIZONTAL TIE DISTANCES TO FIXED WITNESS MONUMENTS. DESCRIBE ALL MONUMENTS FOUND OR SET.

- 3" Magnetic Nail Set
- 3/4" Rebar Set
- Langlade County Witness Monument (Berntsen)
- Street sign
- 1/4 & Sec Lines
- Road centerline
- EOB Edge of Bit



N.T.S.