

4301231 0020 2023

# U.S. PUBLIC LAND SURVEY MONUMENT RECORD

HISTORY OF ORIGINAL CORNER ESTABLISHMENT AND SUBSEQUENT RESTORATION AND DESCRIPTION OF ANY RECORD, MONUMENT OCCUPATIONAL, TESTIMONIAL OR OTHER EVIDENCE CONSIDERED:

THE ORIGINAL CORNER WAS SET BY W. J. NEELY IN 1853.  
THE ORIGINAL BEARING TREES WERE:

- 30" BIRCH N14°E 49 LINKS
- 14" HEMLOCK S83°W 35 LINKS

1980 ABENDROTH FOUND AN IRON PIPE AND REPLACED IT WITH A STANDARD MONUMENT

2003 REUTER FOUND LANGLADE COUNTY MONUMENT

2023 I FOUND A 2" PIPE WITH BRASS CAP AT THE FENCE INTERSECTION AND SET ADDITIONAL TIES

● = LOCATION OF CORNER

		31	

SECTION 31  
TOWNSHIP 30 NORTH, RANGE 12 EAST  
TOWN OF NORWOOD  
LANGLADE COUNTY, WISCONSIN

CORNER WAS: (CHECK ALL THAT APPLY)

- RESTORED THROUGH ACCEPTANCE OF AN OBLITERATED EVIDENCE LOCATION
- RESTORED THROUGH ACCEPTANCE OF A FOUND PERPETUATED LOCATION
- CONSIDERED A LOST CORNER AND REESTABLISHED THROUGH LOST CORNER PROPORTIONATE METHODS (INCLUDE A PLAN VIEW DRAWING SHOWING DISTANCES AND DIRECTIONS TO OTHER PUBLIC LAND SURVEY CORNERS USED FOR PROPORTIONING AND DETERMINING THE CORNER LOCATION)
- RESTORED OR REESTABLISHED IN A LOCATION THAT DIFFERS FROM A PREVIOUS RESTORATION OR REESTABLISHMENT (INCLUDE A PLAN VIEW DRAWING AND INDICATE WHAT WAS SET AND/OR FOUND)
- CHECK IF THERE IS ADDITIONAL INFORMATION ON BACK

DESCRIBE THE MONUMENT AND ACCESSORIES USED TO PERPETUATE THE LOCATION OF THE CORNER. (INCLUDE A PLAN VIEW DRAWING AND INDICATE WHAT WAS SET AND/OR FOUND) ALSO INCLUDE FOUR TIES TO THE SECTION CORNER AND DESCRIPTION OF THE TIES.

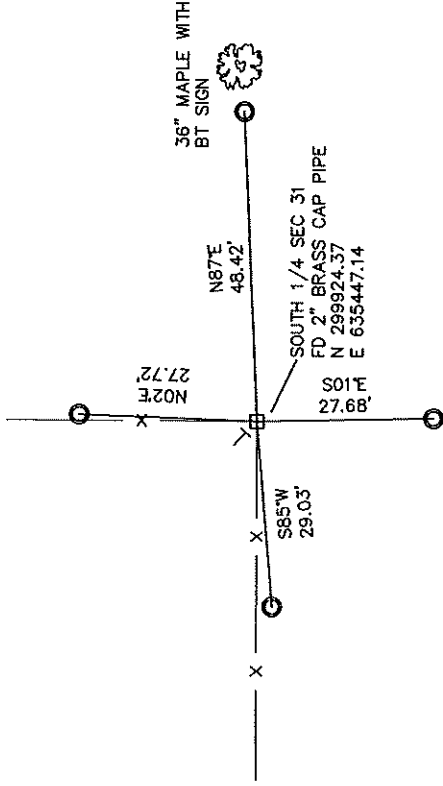
○ SET 3/4" X 30" RE-BAR WEIGHING 1.50 LBS/FT

⊙ FD 1" I. PIPE

● FD WITNESS MONUMENT

BEARINGS REFERENCED TO THE LANGLADE COUNTY COORDINATE SYSTEM

T SET 6 FOOT WHITE T-POST



CHARLEY G. BRINKMEIER

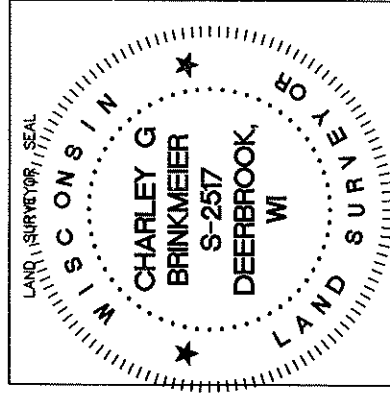
(Type or print name) CERTIFY THAT THE CORNER LOCATION SHOWN ON THIS RECORD WAS DETERMINED BY ME OR UNDER MY DIRECTION AND CONTROL AND THAT THIS U.S. PUBLIC LAND SURVEY MONUMENT RECORD IS CORRECT AND COMPLETE TO THE BEST OF MY KNOWLEDGE AND BELIEF.

*Charley G. Brinkmeier*

SIGNATURE

OCT 20 2023

DATE



INDEX NO.  
23 30-12

CERTIFIED LAND CORNER RESTORATION

Index No. 2-3

State of Wisconsin }  
County of Langlade } ss.

I Edwin R. Abendroth, do hereby certify that on the 10th day of July, 1980, I found evidence of the South 1/4 corner of Section 31 Township 30, North, Range 12 East, Fourth Principal Meridian, as described hereon; and that from this evidence I established a new monument and accessories as described hereon to perpetuate the original location of this corner.

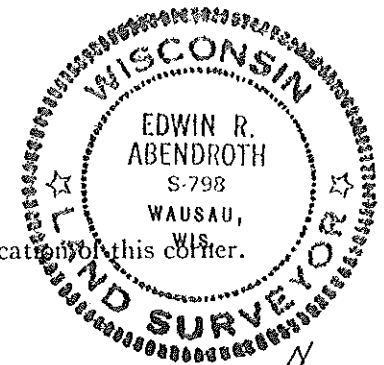
Resident witnesses:

.....  
.....  
.....

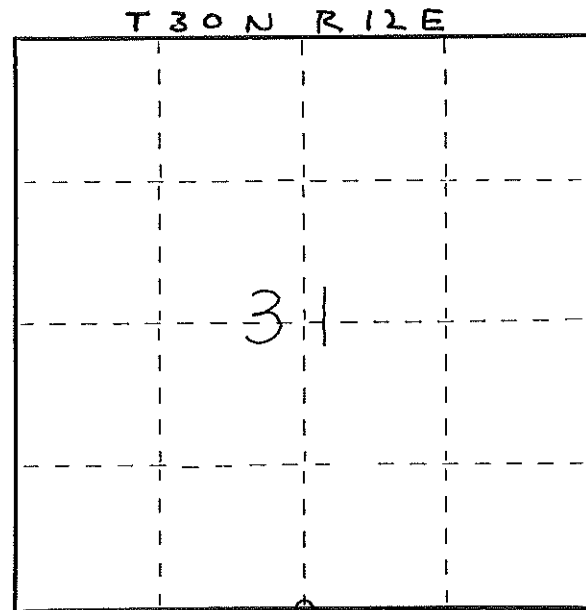
History of original corner establishment:  
Original survey conducted, started November, 1854, finished December, 1854, by James Withrow, deputy Surveyor, found no original evidence, as per original government notes.

Description of corner evidence found:  
Found 1 1/4" iron pipe over old axle shaft, replaced with standard monument after viewing Section measurements. Origin unknown.

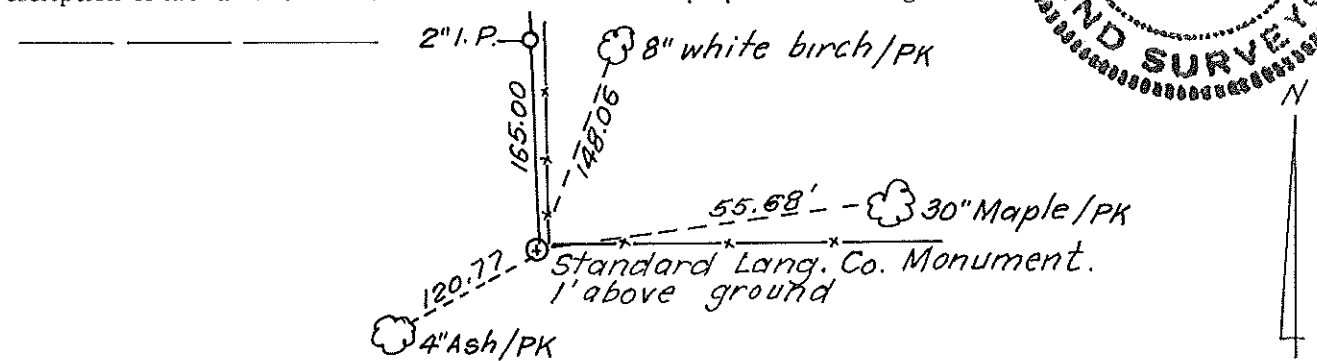
Description of monument and accessories I established to perpetuate the original location of this corner.



43012310020  
FORM 985 H. C. MILLER CO., MILWAUKEE



○ = Corner monument restored.



Dated at Wausau, Wis., this 12th day of August, 1980.

Signature Edwin R. Abendroth Title Registered Land Surveyor Registration No. S-798  
(County Surveyor, Registered Land Surveyor, or other duly authorized official)

Office of Register of Deeds, County of \_\_\_\_\_, I hereby certify that the within instrument was filed in this office for record on the \_\_\_\_\_ day of \_\_\_\_\_, 19\_\_\_\_ at \_\_\_\_\_ o'clock \_\_\_\_\_ M.

(Register of Deeds)

By \_\_\_\_\_ Deputy