

CERTIFIED LAND CORNER RESTORATION

Index No. V-3

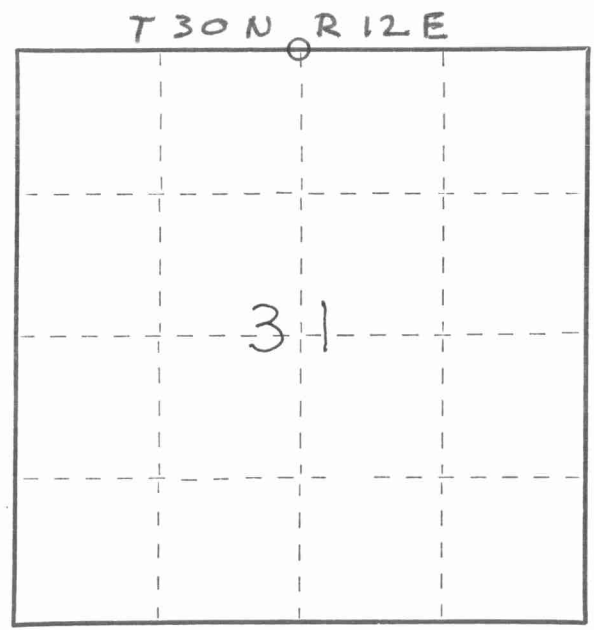
State of Wisconsin }  
County of Lanlade } ss.

I Edwin R. Abendroth, do hereby certify that on the 7th day of July, 1980, I found evidence of the North 1/4 corner of Section 31 Township 30, North, Range 12 East, Fourth Principal Meridian, as described hereon; and that from this evidence I established a new monument and accessories as described hereon to perpetuate the original location of this corner.

Resident witnesses:  
.....  
.....  
.....

4301230000

FORM 985 H. C. MILLER CO., MILWAUKEE



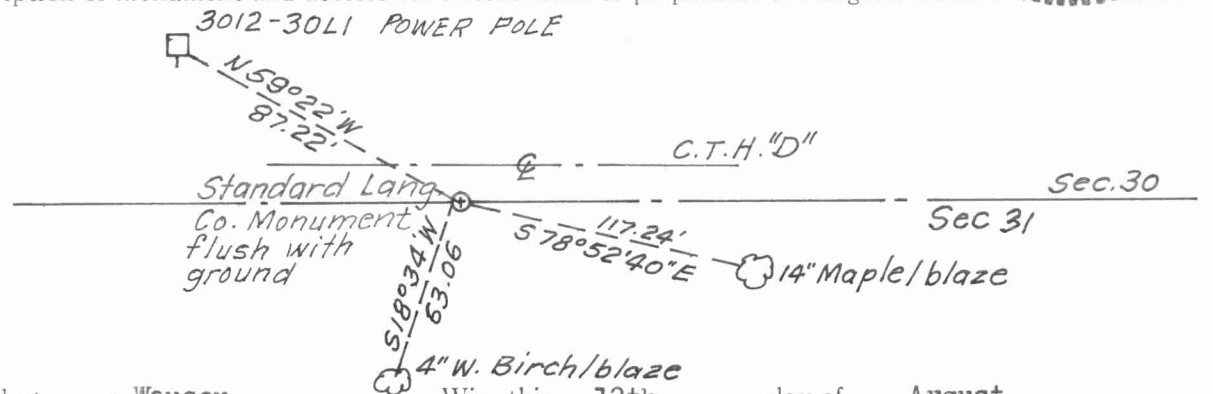
○ = Corner monument restored.

History of original corner establishment:  
Original survey conducted, started November, 1854, finished December, 1854, by James Withrow, deputy Surveyor, found no original evidence as per original government notes.

Description of corner evidence found:  
Fence lines to North and South, set corner at proportionate distance from NW and NE Section corners.



Description of monument and accessories I established to perpetuate the original location of this corner.



Dated at Wausau, Wis., this 12th day of August, 1980.

Signature Edwin R. Abendroth Title Registered Land Surveyor Registration No. S-798  
(County Surveyor, Registered Land Surveyor, or other duly authorized official)

Office of Register of Deeds, County of....., I hereby certify that the within instrument was filed in this office for record on the.....day of....., 19..... at.....o'clock..... M.

(Register of Deeds)

By.....Deputy