

CERTIFIED LAND CORNER RESTORATION

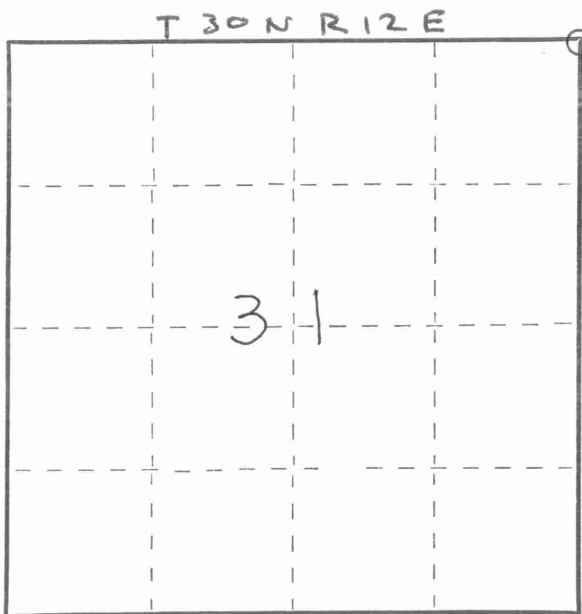
Index No. V-5

State of Wisconsin }
County of Langlade } ss.

I Edwin R. Abendroth, do hereby certify that on the 7th day of July, 1980, I found evidence of the Northeast Corner corner of Section 31 Township 30, North, Range 12 East, Fourth Principal Meridian, as described hereon; and that from this evidence I established a new monument and accessories as described hereon to perpetuate the original location of this corner.

Resident witnesses:

.....
.....
.....



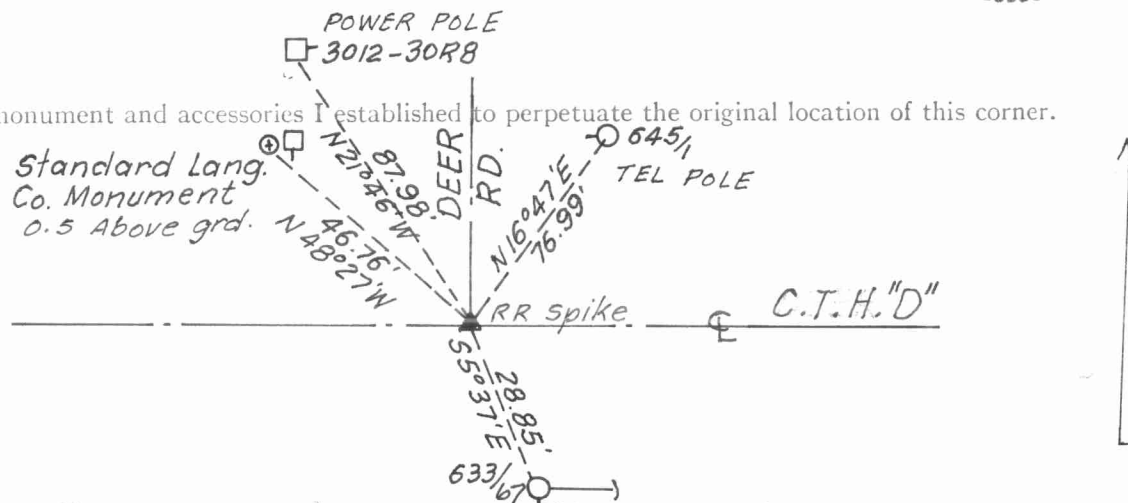
○ = Corner monument restored.

History of original corner establishment:
Original Survey conducted, started, November, 1854, finished, December 1854 by James Withrow, deputy Surveyor, found no original evidence as per original government notes.

Description of corner evidence found:
Intersecting road centerline and fence line.



Description of monument and accessories I established to perpetuate the original location of this corner.



Dated at Wausau, Wis., this 12th day of August, 1980

Signature Edwin R. Abendroth, Registered Land Surveyor, Registration No. S-798
(County Surveyor, Registered Land Surveyor, or other duly authorized official)

Office of Register of Deeds, County of....., I hereby certify that the within instrument was filed in this office for record on the..... day of....., 19..... at..... o'clock..... M.

(Register of Deeds)

By..... Deputy

4301230000

FORM 985 H. C. MILLER CO., MILWAUKEE