

4301229 0000 2023

U.S. PUBLIC LAND SURVEY MONUMENT RECORD

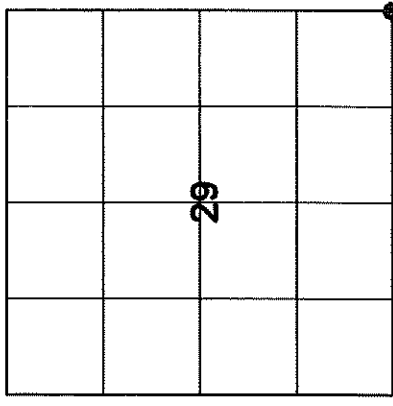
HISTORY OF ORIGINAL CORNER ESTABLISHMENT AND SUBSEQUENT RESTORATION AND DESCRIPTION OF ANY RECORD, MONUMENT OCCUPATIONAL, TESTIMONIAL OR OTHER EVIDENCE CONSIDERED:

THE ORIGINAL CORNER WAS SET BY WITHROW IN 1853. THE ORIGINAL BEARING TREES WERE:
 12" HEMLOCK N43°E 13.5 LINKS
 16" HEMLOCK S24°W 13 LINKS

1988 KELLY SET A PK NAIL OVER AN EXISTING IRON IN THE ROAD AND FENCE INTERSECTION

2023 I FOUND A MAG NAIL AND TIES AND SET ADDITIONAL TIES

● = LOCATION OF CORNER



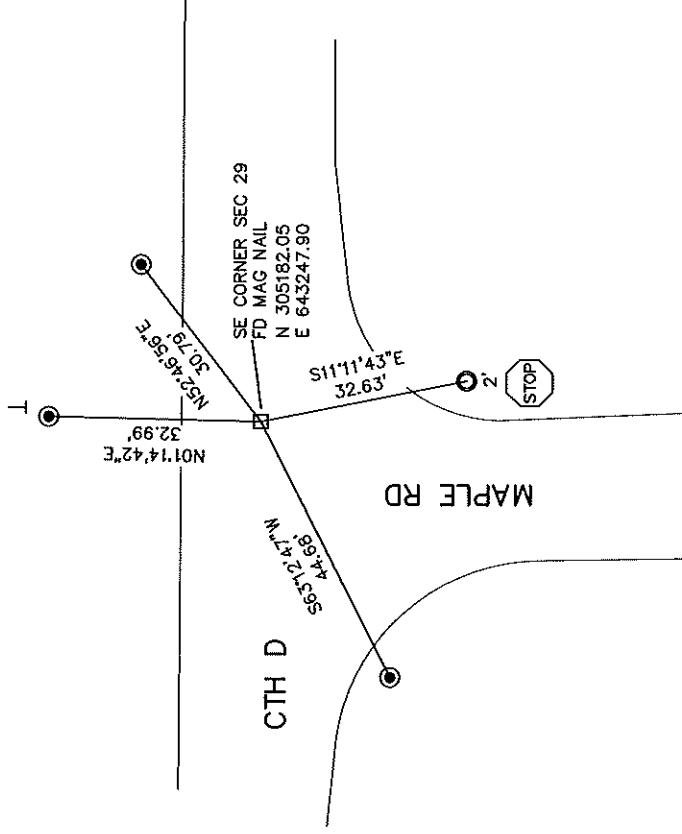
SECTION 29
 TOWNSHIP 30 NORTH, RANGE 12 EAST
 TOWN OF NORWOOD
 LANGLADE COUNTY, WISCONSIN

CORNER WAS: (CHECK ALL THAT APPLY)

- RESTORED THROUGH ACCEPTANCE OF AN OBLITERATED EVIDENCE LOCATION
- RESTORED THROUGH ACCEPTANCE OF A FOUND PERPETUATED LOCATION
- CONSIDERED A LOST CORNER AND REESTABLISHED THROUGH LOST CORNER PROPORTIONATE METHODS (INCLUDE A PLAN VIEW DRAWING SHOWING DISTANCES AND DIRECTIONS TO OTHER PUBLIC LAND SURVEY CORNERS USED FOR PROPORTIONING AND DETERMINING THE CORNER LOCATION)
- RESTORED OR REESTABLISHED IN A LOCATION THAT DIFFERS FROM A PREVIOUS RESTORATION OR REESTABLISHMENT (INCLUDE A PLAN VIEW DRAWING AND INDICATE WHAT WAS SET AND/OR FOUND)
- CHECK IF THERE IS ADDITIONAL INFORMATION ON BACK

DESCRIBE THE MONUMENT AND ACCESSORIES USED TO PERPETUATE THE LOCATION OF THE CORNER. (INCLUDE A PLAN VIEW DRAWING AND INDICATE WHAT WAS SET AND/OR FOUND) ALSO INCLUDE FOUR TIES TO THE SECTION CORNER AND DESCRIPTION OF THE TIES.

- SET 3/4" X 30" RE-BAR WEIGHING 1.50 LBS/FT
- FD 1" I. PIPE
- FD WITNESS MONUMENT
- BEARINGS REFERENCED TO THE LANGLADE COUNTY COORDINATE SYSTEM
- T SET 6 FOOT WHITE T-POST

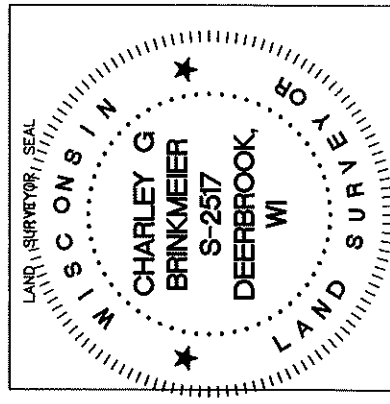


CHARLEY G. BRINKMEIER

(Type or print name) CERTIFY THAT THE CORNER LOCATION SHOWN ON THIS RECORD WAS DETERMINED BY ME OR UNDER MY DIRECTION AND CONTROL AND THAT THIS U.S. PUBLIC LAND SURVEY MONUMENT RECORD IS CORRECT AND COMPLETE TO THE BEST OF MY KNOWLEDGE AND BELIEF.

Charley G. Brinkmeier
 SIGNATURE

OCT 20 2023
 DATE



INDEX NO.

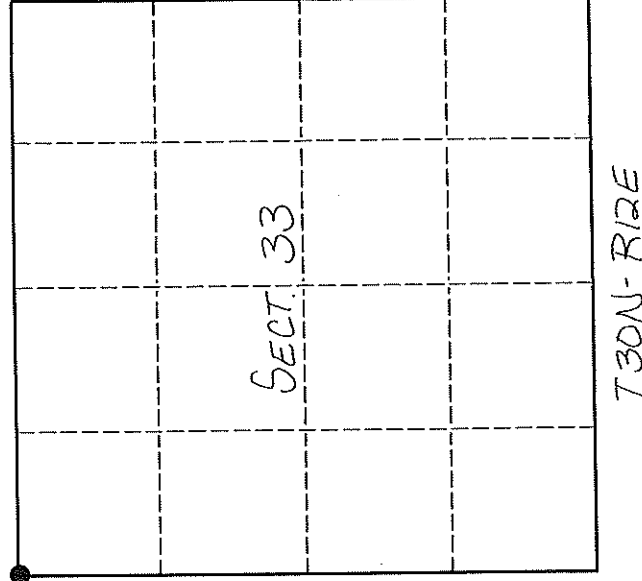
4301289000

U. S. PUBLIC LAND SURVEY MONUMENT RECORD

INSTRUCTIONS:

This record shall show the location of the corner and shall include all of the following nine elements (a through i).

- (a) Identify the corner by reference to the U.S. public land survey system.
- = Corner monument restored.

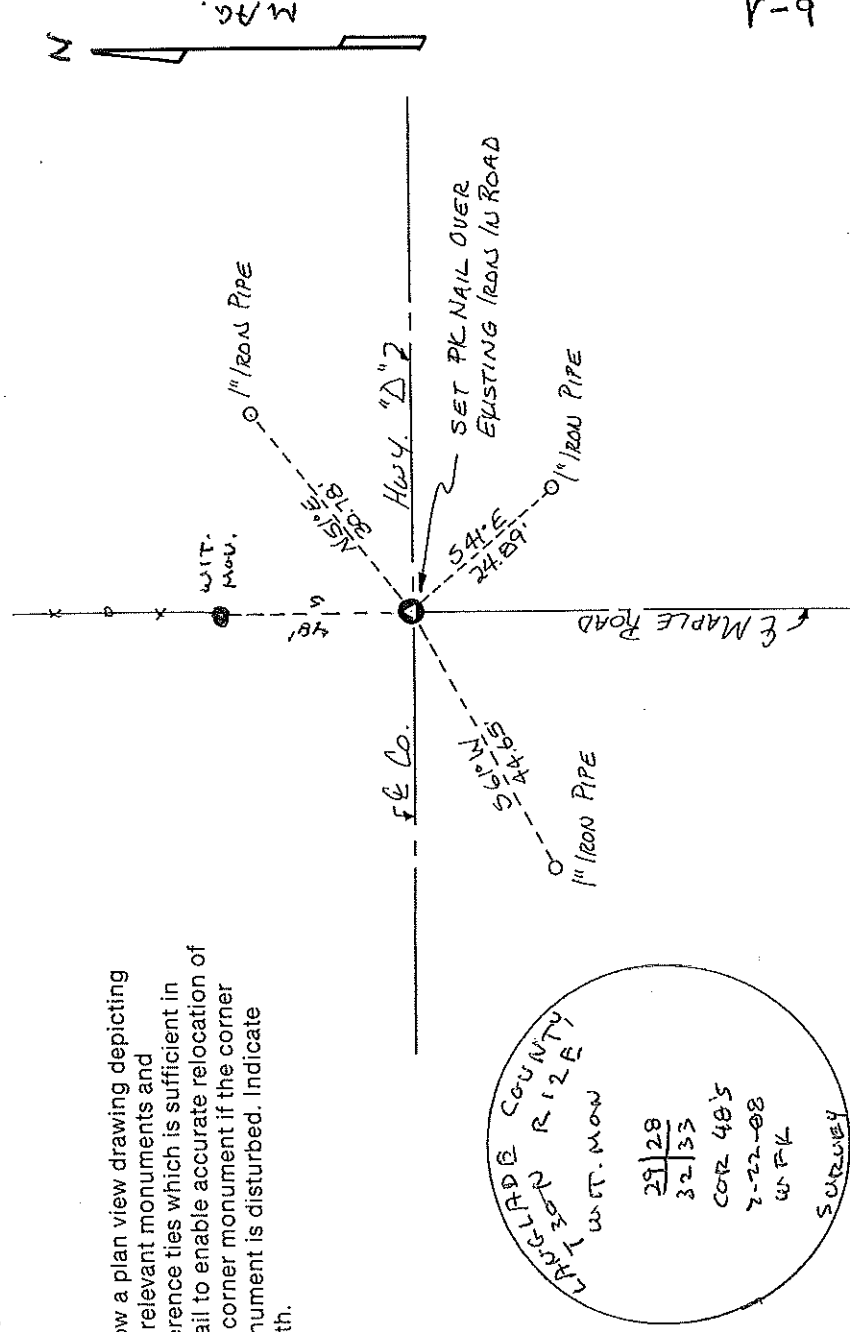


ORIGINAL CORNER ESTABLISHED
BY JAMES WITHROW IN 1854

- (b) Describe any record evidence, monument evidence, occupational evidence, testimonial evidence or any other material evidence you considered, and whether the monument was found or placed.

SET PK NAIL OVER EXISTING IRON IN ROAD
& AND FENCE LINE INTERSECTION

- (c) In the plan view drawing below, provide reference ties to at least 4 witness monuments, or, if the location is within a municipality, to at least 2 witness monuments. (Witness monuments shall be made of concrete, natural stone, iron or other equally durable material.) Describe witness monuments.



MAPLE COUNTY
R12E
T30N
COR 48'S
2-22-08
WPK
SURVEY

29 | 28
32 | 33
COR 48'S
2-22-08
WPK

43012290000

Describe any material discrepancy between the location of the corner as restored or reestablished and the location of that corner as previously restored or reestablished by distance and direction. Show the discrepancy on the plan view drawing under (d), above. Show the distances between the corner as previously restored or reestablished and (1) the corner as restored or reestablished, and (2) to at least 2 of the witness monuments shown on the drawing in (d), above.

NONE

(f) Was the corner restored through acceptance of (1) an obliterated evidence location, or, (2) a found perpetuated location?
(2)

(g & h) Was the corner reestablished through lost corner proportionate methods? If so, show the method, including the directions and distances to other public land survey corners used as evidence or used for proportioning in determining the corner location.

No

(i) I, WILLIAM F. KELLY, (type or print name) R.L.S. 1098

certify that the corner location shown on this record was determined by me or under my direction and control and that this U.S. Public Land Survey Monument Record is correct and complete to the best of my knowledge and belief.

William F. Kelly
Signature

3-29-90
Date

