

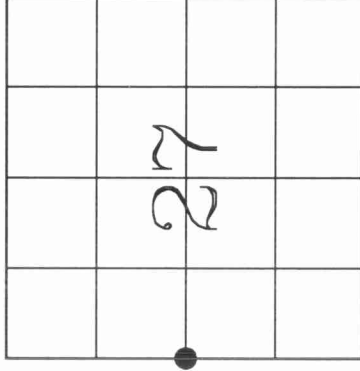
U.S. PUBLIC LAND SURVEY MONUMENT RECORD

4/30/12 28 2000

HISTORY OF ORIGINAL CORNER ESTABLISHMENT AND SUBSEQUENT RESTORATION AND DESCRIPTION OF ANY RECORD, MONUMENT OCCUPATIONAL, TESTIMONIAL OR OTHER EVIDENCE CONSIDERED:

The original corner was established in 1854 by James Withrow. Original Bearing Trees: Basswood 9" N69W 44lks., Fir 10" S80E 18lks. Weby, the County Surveyor, in the course of his Resurvey work in 1919, mentions a pump point at the Center of Section 28 and a pump point "1/8 E of Center". On 1/6/98, Kelly Jordan and Gerry Bahar located, with a metal locator, the Center of Sec 28 (Weby's pump point) and a 1 1/4" pipe at a fence corner 1300' to the East (Weby's pump point location @ the 40 corner). We doubted that distance over to the East and found a fence intersection to be 9' West and 6' North of our computed location. We accepted the fence intersection as a perpetuated location of the West 1/4 and set a 2 1/2" Langlade Co. Brass Capped Monument and tied it out.

● = LOCATION OF CORNER



SECTION 27

TOWNSHIP 30 NORTH, RANGE 12 EAST

TOWN OF NORWOOD

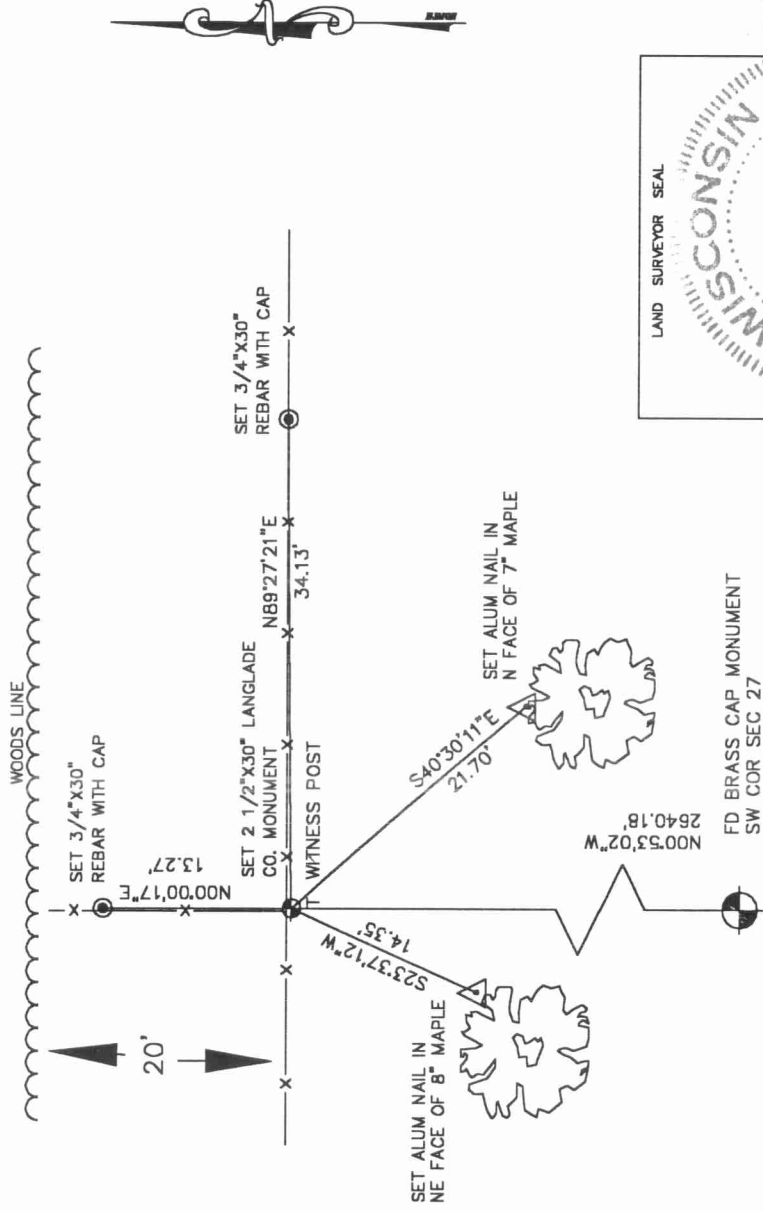
LANGLADE COUNTY, WISCONSIN

CORNER WAS: (CHECK ALL THAT APPLY)

- RESTORED THROUGH ACCEPTANCE OF AN OBLITERATED EVIDENCE LOCATION
- RESTORED THROUGH ACCEPTANCE OF A FOUND PERPETUATED LOCATION
- CONSIDERED A LOST CORNER AND REESTABLISHED THROUGH LOST CORNER PROPORTIONATE METHODS (INCLUDE A PLAN VIEW DRAWING SHOWING DISTANCES AND DIRECTIONS TO OTHER PUBLIC LAND SURVEY CORNERS USED FOR PROPORTIONING AND DETERMINING THE CORNER LOCATION)
- RESTORED OR REESTABLISHED IN A LOCATION THAT DIFFERS FROM A PREVIOUS RESTORATION OR REESTABLISHMENT (INCLUDE A PLAN VIEW DRAWING AND INDICATE WHAT WAS SET AND/OR FOUND)
- CHECK IF THERE IS ADDITIONAL INFORMATION ON BACK

DESCRIBE THE MONUMENT AND ACCESSORIES USED TO PERPETUATE THE LOCATION OF THE CORNER. (INCLUDE A PLAN VIEW DRAWING AND INDICATE WHAT WAS SET AND/OR FOUND) ALSO INCLUDE FOUR TIES TO THE SECTION CORNER AND DESCRIPTION OF THE TIES.

FIELD



DANIEL E. HIGGINBOTHAM

(Type or print name) CERTIFY THAT THE CORNER LOCATION SHOWN ON THIS RECORD WAS DETERMINED BY ME OR UNDER MY DIRECTION AND CONTROL AND THAT THIS U.S. PUBLIC LAND SURVEY MONUMENT RECORD IS CORRECT AND COMPLETE TO THE BEST OF MY KNOWLEDGE AND BELIEF.

SIGNATURE *Daniel E. Higginbotham*

DATE 5/23/00

T13
30-12

INDEX NO.

