

4301227 2000

U.S. PUBLIC LAND SURVEY MONUMENT RECORD

(Prepared and as required by S. A-E 7.08 WI Administrative Code)

The EAST 1/4 corner of Section 27, T. 30 N., R. 12 E., Langlade County, WI
Corner was (check all that apply)

- Restored through acceptance of an obliterated evidence location.
- Restored through acceptance of a found perpetuated location.
- Determined to be lost and re-established through proportionate methods. (show bearings and distances to PLSS corners used for proportioning.)
- Restored/recovered/re-established in a location that differs from a previously established position. (Show difference in plan view below.)
- Check here if additional information is shown on the reverse side of this form.

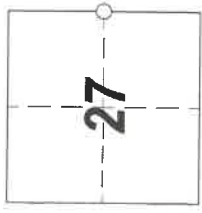
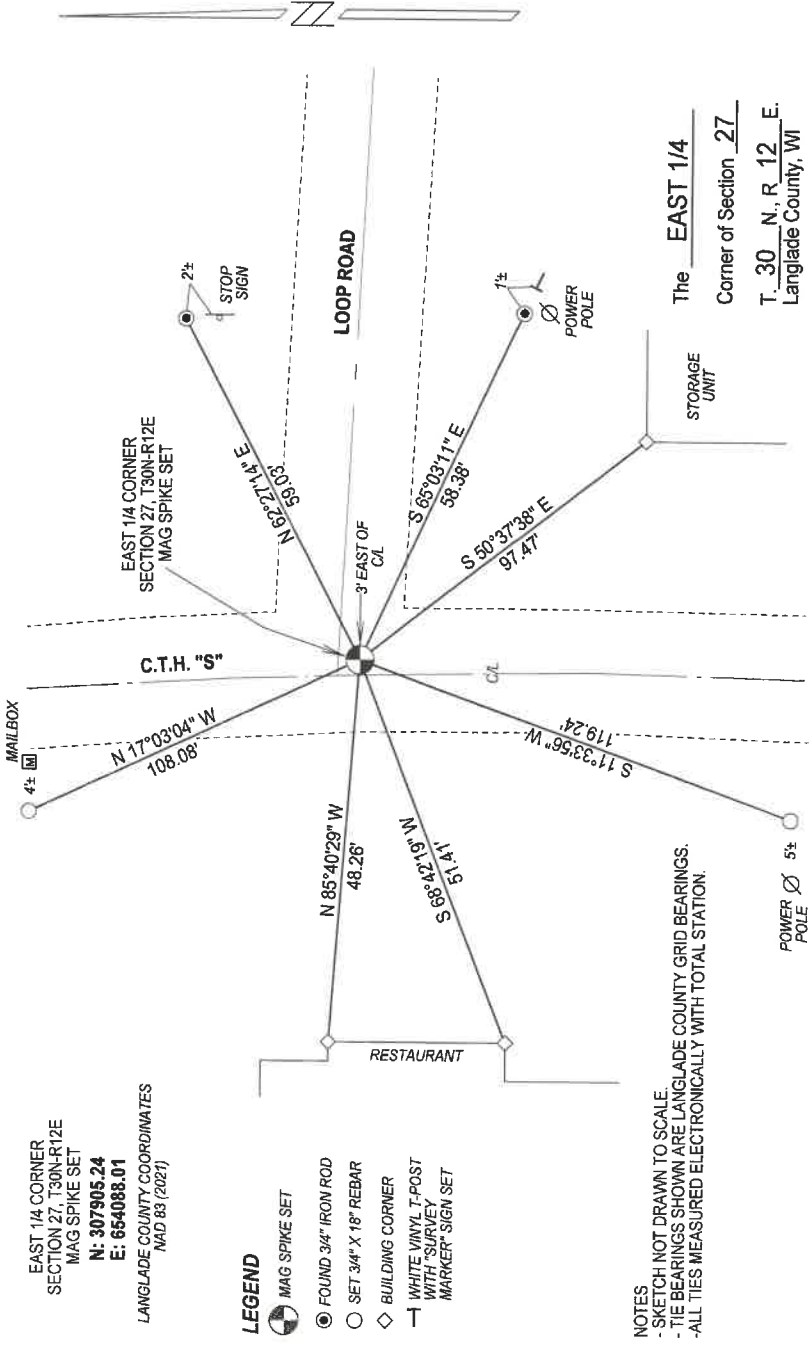
Describe record evidence, recovered physical evidence, occupational evidence, testimonial evidence, and all other evidence considered in the recovery/restoration of the corner.

- 1854 - Original corner established by J. Withdraw - bearing trees: Maple, 10", N81°W, 5 links and a Maple, 12", S50.5°E, 4 links.
- 1996 - Thomas Arnott found PK nail in centerline of north-south road (C.T.H. "S") and road leading east to S.T.H. "47". He removed the pk nail, set railroad spike, set ties and filed tie sheet.
- 1997 - Stephen Faulkes found existing railroad spike but only one tie. He made additional ties and filed tie sheet.
- 2022 - Road construction in summer of 2022 destroyed corner location. I found the railroad spike set by Arnott prior to road construction. I reset corner after construction, verified corner location with existing ties set by Arnott and Faulkes.

Physical description of the monument set:

Set mag spike at corner location and tied out as shown below.

Describe the accessories used to perpetuate the location of the corner. Include a plan view drawing and indicate accessories found/set. Describe measuring point on bearing trees. Show any topographic features that would aid in future recovery of the corner.



○ = Location of corner



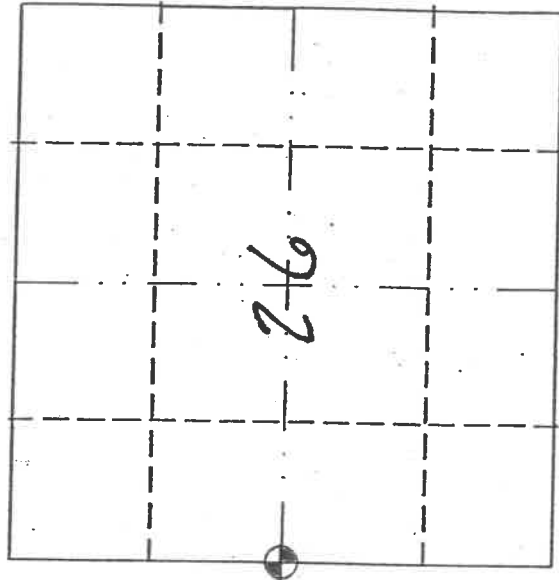
I, Michael J. Hoffman certify that the corner location shown on this record was determined by me or under my direction and control and that this U.S. Public Land Survey Monument Record is correct and complete to the best of my knowledge and belief.

Michael J. Hoffman Signature
12/12/2022 Date

4301aa7a000

U.S. PUBLIC LAND SURVEY MONUMENT RECORD

THIS RECORD SHALL SHOW THE LOCATION OF THE CORNER AND SHALL INCLUDE ALL OF THE FOLLOWING NINE ELEMENTS (A THROUGH I).



☉ corner monument restored.

(a) Identify the corner by reference to the U.S. public land survey system.

W 1/4 CORNER SECTION 26,
 T 30 N, R 12 E,
 TOWN OF NORWOOD,
 LANGLADE COUNTY, WIS.

(b) Describe any record evidence, monument evidence, occupational evidence, testimonial evidence or any other material evidence you considered, and whether the monument was found or placed.

FOUND RAILROAD SPIKE BUT ONLY ONE TIE EXISTING

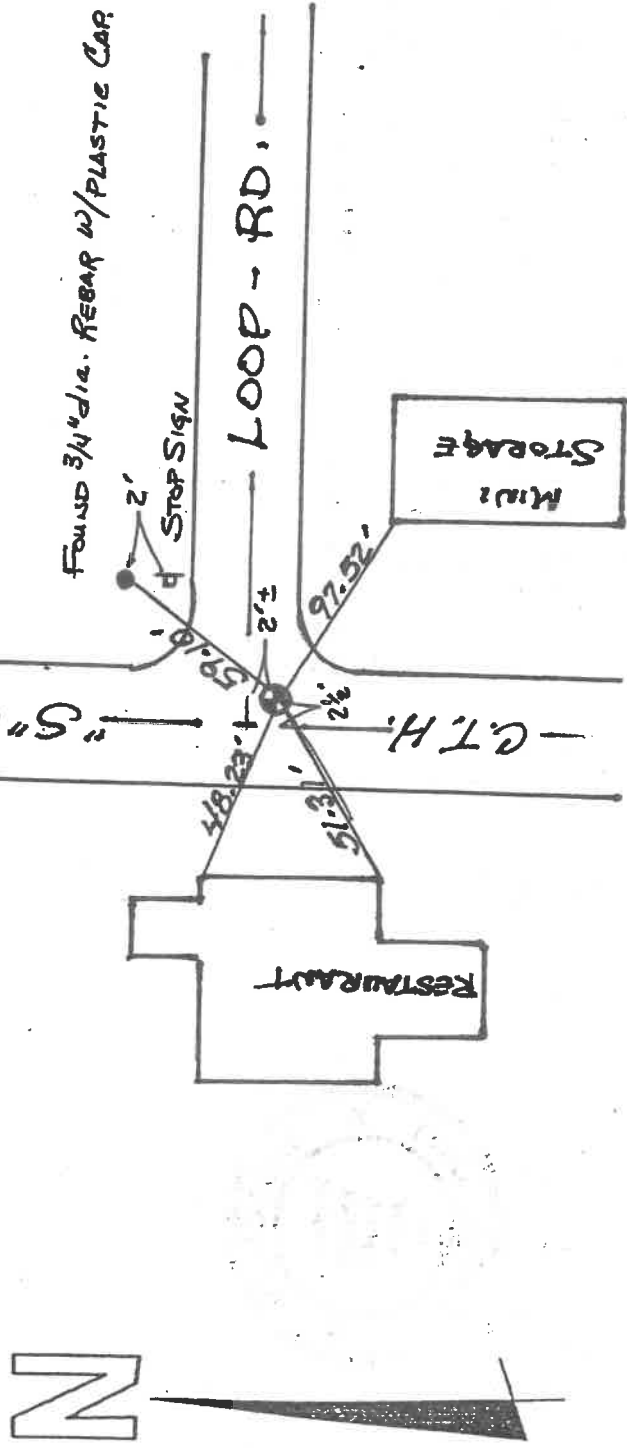
(c) In the plan view drawing below, provide reference ties to at least four witness monuments, or, if the location is within a municipality, to at least two witness monuments. (Witness monuments shall be made of concrete, natural stone, iron or other equally durable material.) Describe witness monuments.

(d) Show a plan view drawing depicting the relevant monuments and reference ties which is sufficient in detail to enable accurate relocation of the corner monument if the corner monument is disturbed. Indicate north.

DISTANCES MEASURED
W/ STEEL TAPE

LEGEND:

⊙ RR. SPIKE FOUND.



T 17

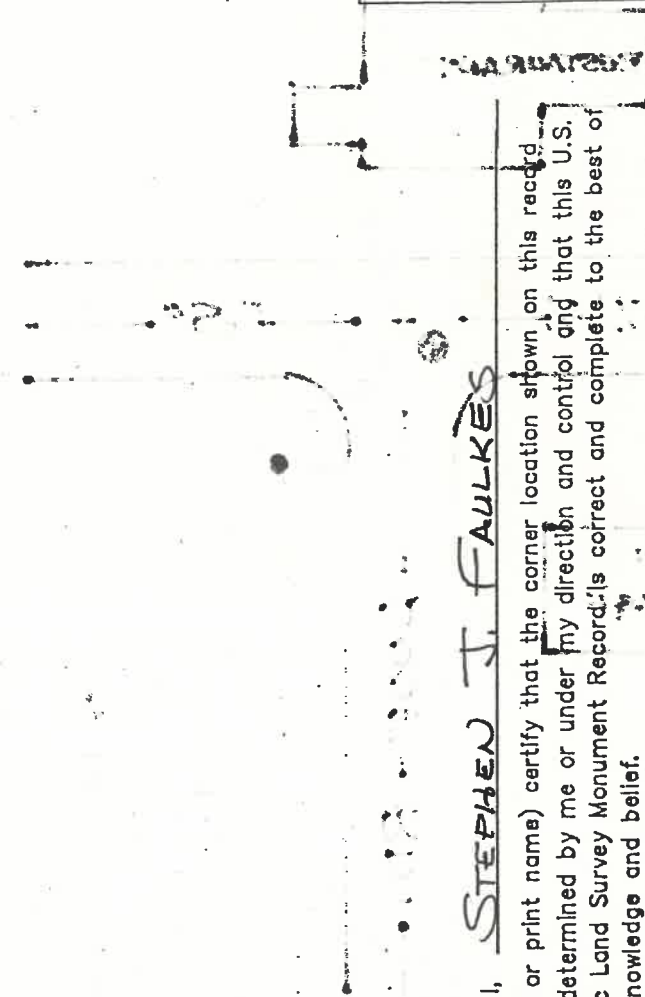
4301227a000

(e) Describe any material discrepancy between the location of the corner as restored or reestablished and the location of that corner as previously restored or reestablished by distance and direction. Show the discrepancy on the plan view drawing under (d), above. Show the distances between the corner as previously restored or reestablished and (1) the corner as restored or reestablished, and (2) to at least two of the witness monuments shown on the drawing in (d), above.

(f) Was the corner ~~restored~~ through acceptance of (1) an obliterated evidence location, or (2) a found perpetuated location?

THIS WAS A FOUND PERPETUATED LOCATION

(g) & (h) Was the corner reestablished through lost corner proportionate methods? If so, show the method, including the directions and distances to other public land survey corners used as evidence or used for proportioning in determining the corner location?



(1) I, STEPHEN J. FAULKES

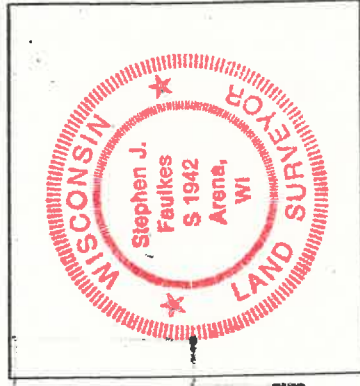
(type or print name) certify that the corner location shown on this record was determined by me or under my direction and control and that this U.S. Public Land Survey Monument Record is correct and complete to the best of my knowledge and belief.

Stephen J. Faulkes

Signature

10/18/97

Date



affix land surveyor seal

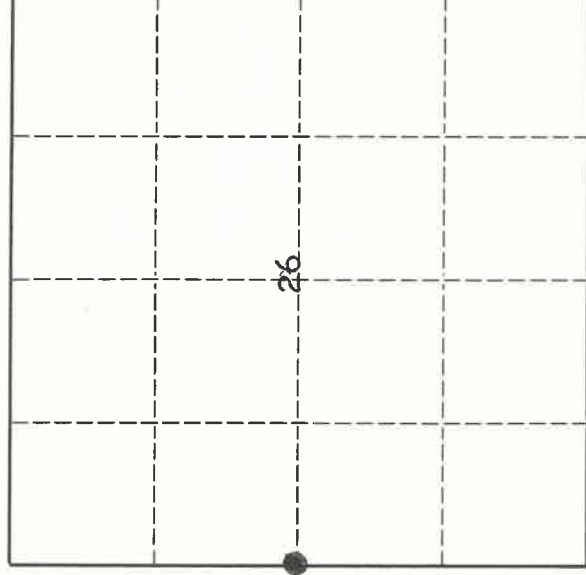
4301227000

U. S. PUBLIC LAND SURVEY MONUMENT RECORD

INSTRUCTIONS:

This record shall show the location of the corner and shall include all of the following nine elements (a through i).

- (a) Identify the corner by reference to the U.S. public land survey system.
- O = Corner monument restored.



1/4 corner sections 26 and 27

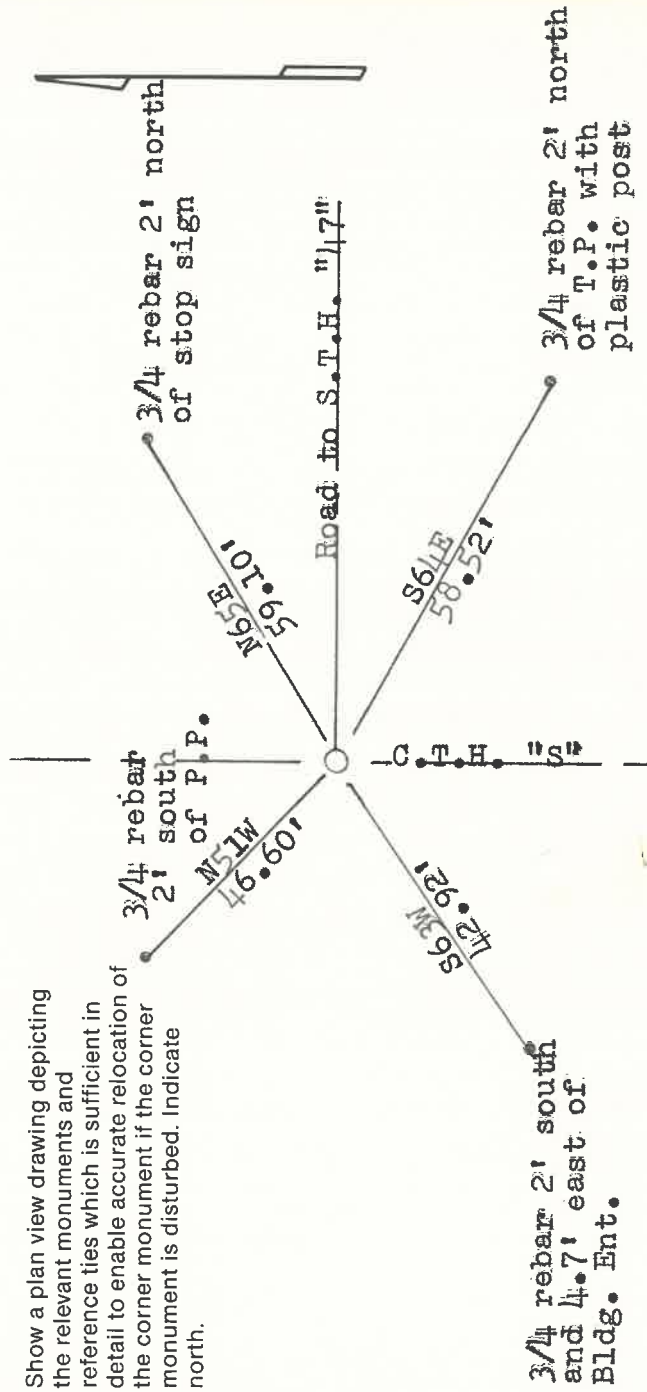
T30N, R12E

- (b) Describe any record evidence, monument evidence, occupational evidence, testimonial evidence or any other material evidence you considered, and whether the monument was found or placed.

Found P.K. nail in centerline of north-south road (C.T.H. "S") and a road leading east to S.T.H. "47". I removed the P.K. nail and set a railroad spike.

- (c) In the plan view drawing below, provide reference ties to at least 4 witness monuments, or, if the location is within a municipality, to at least 2 witness monuments. (Witness monuments shall be made of concrete, natural stone, iron or other equally durable material.) Describe witness monuments.

- (d) Show a plan view drawing depicting the relevant monuments and reference ties which is sufficient in detail to enable accurate relocation of the corner monument if the corner monument is disturbed. Indicate north.



43012272000

Describe any material discrepancy between the location of the corner as restored or reestablished and the location of that corner as previously restored or reestablished by distance and direction. Show the discrepancy on the plan view drawing under (d), above. Show the distances between the corner as previously restored or reestablished and (1) the corner as restored or reestablished, and (2) to at least 2 of the witness monuments shown on the drawing in (d), above.

N/A

(f) Was the corner restored through acceptance of (1) an obliterated evidence location, or, (2) a found perpetuated location?
No. 2

(g & h) Was the corner reestablished through lost corner proportionate methods? If so, show the method, including the directions and distances to other public land survey corners used as evidence or used for proportioning in determining the corner location.
No

(i) I, Thomas R. Arnott S-887
(type or print name)

certify that the corner location shown on this record was determined by me or under my direction and control and that this U.S. Public Land Survey Monument Record is correct and complete to the best of my knowledge and belief.

Thomas Arnott
Signature

9 Dec. 1992
Date

