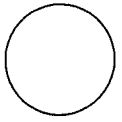


Rec'd 8/6/15

4301226 2020 2015

# LANGLADE COUNTY U.S. PUBLIC LAND SURVEY MONUMENT LOCATION RECORD

SECTION 26  
TOWNSHIP 30 N  
RANGE 12 E



LANDMARK       BENCHMARK \_\_\_\_\_

FOUND   
SET   
RESET   
RE-TIED

CORNER IDENTITY: NO MONUMENT SET

LANGLADE COUNTY COORDINATE: N: 307817.77  
E: 656444.94

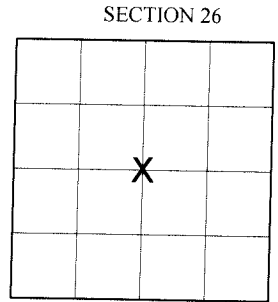
ELEVATION-(FEET): \_\_\_\_\_ DATUM: NAD 83/91

WEATHER: PARTLY SUNNY

DATE OF SURVEY: MAY 25, 2015 TEMPERATURE: 58 °F

SURVEY PARTY: KEITH WALKOWSKI / KYLE FISCHER

NORWOOD  
CITY, VILLAGE, TOWN



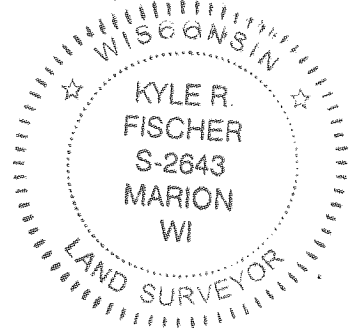
SECTION 26  
LOCATION  
(Indicated By X)



## BASIS FOR MONUMENT LOCATION:

(DESCRIBE METHOD OF SURVEY AND CORNER AUTHENTICATION)

This corner was set by Thomas R. Arnott on December 9th of 1992. According to the tie sheet of record the corner was set at a bearing-bearing intersection. In the spring of 2015 as part of a W.D.O.T construction project for the existing bridge over the Red River this corner was located and new witness monuments were set. Before the removal of the bridge and grading in the right-of-way an Berntsen Survey Marking nail was recovered. The location of the nail fit existing witness monuments in place before the construction. After the completion of the bridge new witness monuments were set. The corner however was not set due to the contract specifications. The corner location falls on the newly constructed bridge deck. The corner location can be identified from the new witness monuments as shown below.



CERTIFIED CORRECT:  
*Kyle R. Fischer*  
\_\_\_\_\_  
Kyle R. Fischer S-2643  
Professional Land Surveyor

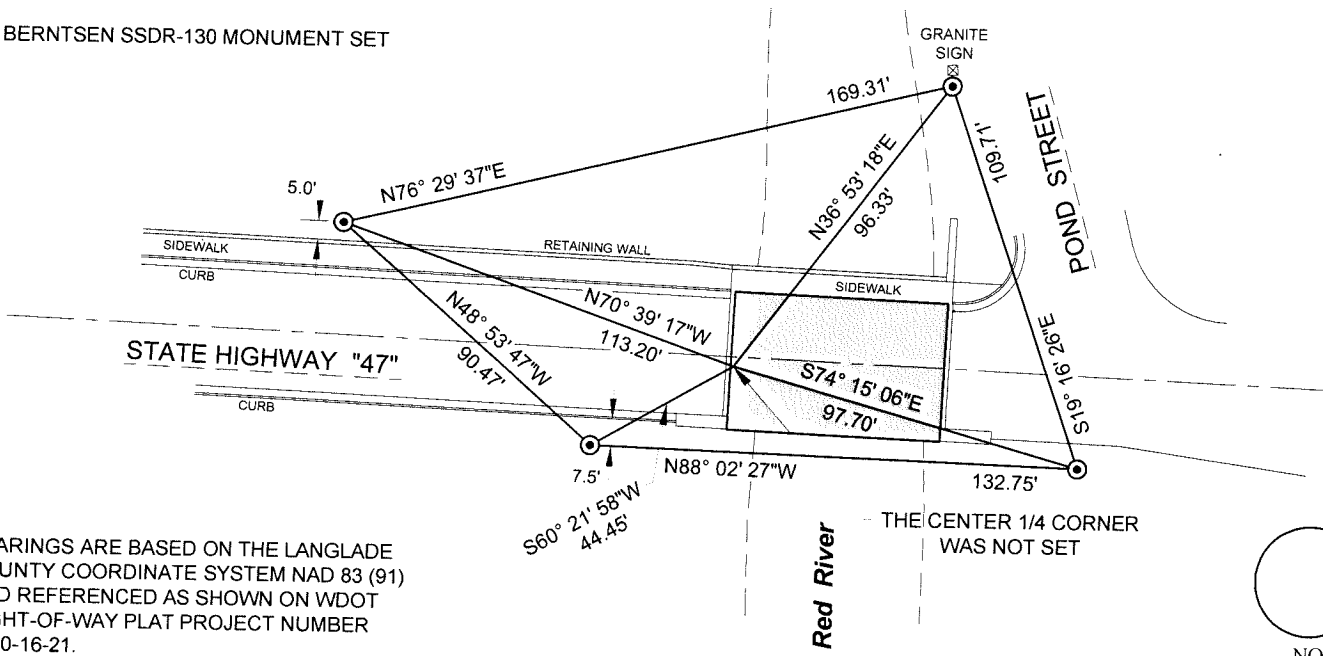
DATE: August 3rd, 2015

FIELD BOOK NO. NA PAGE NO. NA

COMPANY RIVERSIDE LAND SURVEYING LLC

## TIE SKETCH:

⊙ - BERNTSEN SDDR-130 MONUMENT SET



BEARINGS ARE BASED ON THE LANGLADE COUNTY COORDINATE SYSTEM NAD 83 (91) AND REFERENCED AS SHOWN ON WDOT RIGHT-OF-WAY PLAT PROJECT NUMBER 9650-16-21.

THIS DRAWING IS NOT TO SCALE

