

T-19

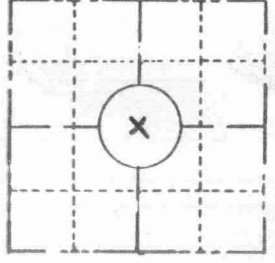
State of Wisconsin / Department of Transportation

FIELD SURVEY NOTES  
**PRESERVATION OF LANDMARKS**  
 (Pursuant to Section 59.635(7) Wisconsin Statutes  
 E-D-707-69

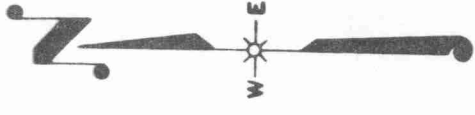
43012262000

COUNTY <b>Langlade</b>	
TOWN <b>Norwood</b>	
HIGHWAY <b>S.T.H. 47</b>	
SECTION <b>26</b>	RANGE <b>12 E</b>
TOWNSHIP <b>30 N</b>	
TYPE OF LANDMARK <b>Center of Section</b>	
<b>P.K. nail in pavement</b>	

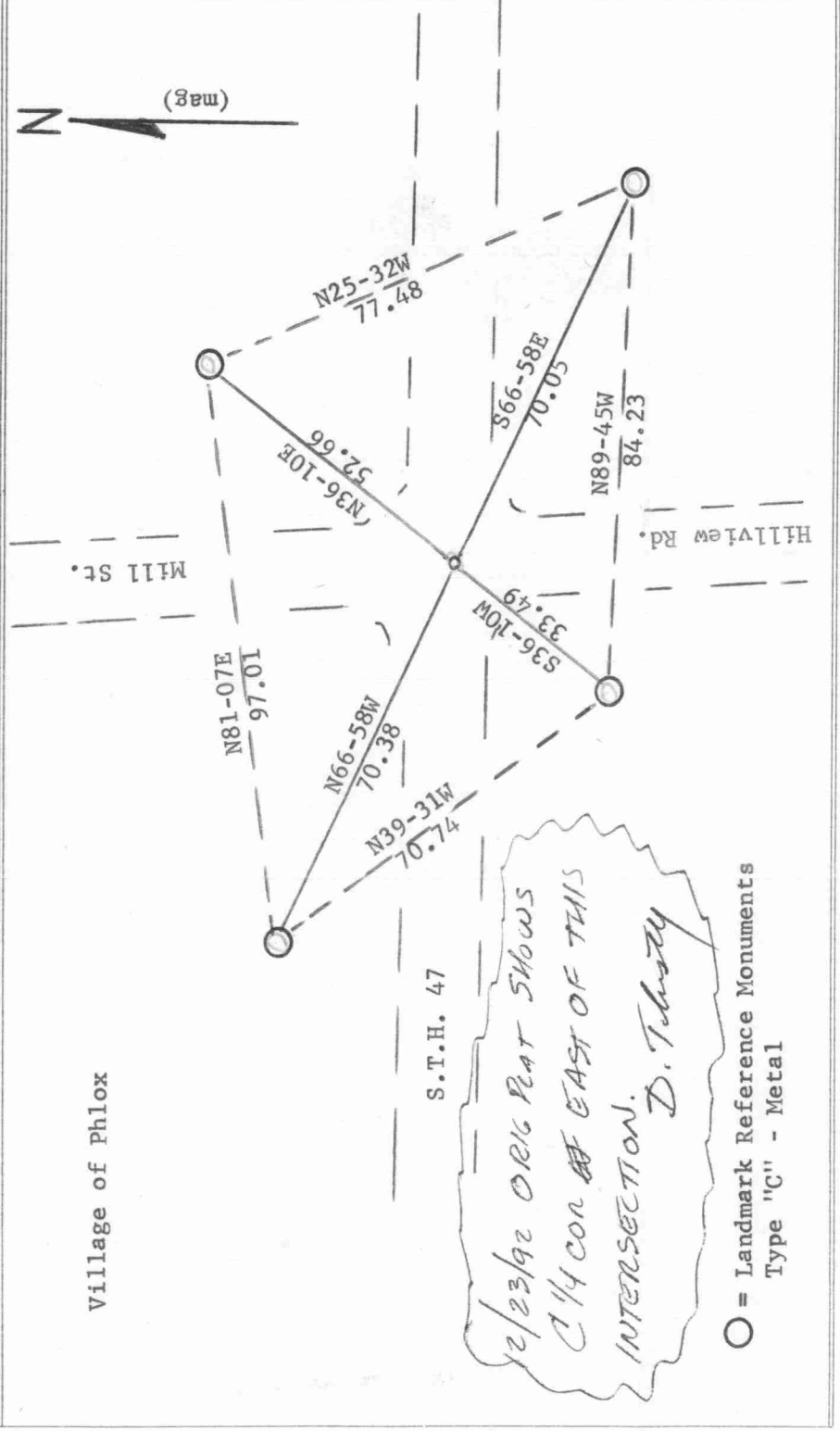
Sec. 26



**LOCATION SKETCH**  
 (Location of landmark indicated by "x")



This space for copy of field notes or ties to the above described landmarks



FILED UNDER PROJECT <b>9650-00-70</b>		COUNTY CLERK'S OFFICE COUNTY OF <b>Langlade</b> WISCONSIN
DISTRICT OFFICE NUMBER <b>Rhineland</b>	CITY <b>Oneida</b>	DATE RECEIVED FOR RECORD <b>12-27-78</b>
LOCATED OR ESTABLISHED BY <b>Am/Ved - 5666</b>		DATE COPY SENT TO COUNTY SURVEYOR <b>12-27-78</b>
NAME <b>Dist. Clk. Knowledge</b>		SIGNATURE OF COUNTY CLERK <i>Norman J. Cygan</i>
TITLE <b>Dist. Clk. Knowledge</b>		DATE <b>11/3/78</b>

