

LANGLADE COUNTY
U.S. PUBLIC LAND CORNER RESTORATION

4301226 0020 2021

The South quarter corner of Section 26, T. 30 N., R. 12 E., Langlade County, WI.

Corner was: (check all that apply)

- Restored through acceptance of an obliterated evidence location.
- Restored through acceptance of a found perpetuated location.
- Determined to be lost and re-established through proportionate methods.
 - Show bearings and distances to PLSS corners used for proportioning, and show original distances).
 - Restored/recovered/re-established in a location that differs from a previously established position. (Show difference in plan view below).
- Check here if additional information is shown on the reverse side of this form.

1854, Original Government Survey by James Withrow, marked two hemlock bearing trees.

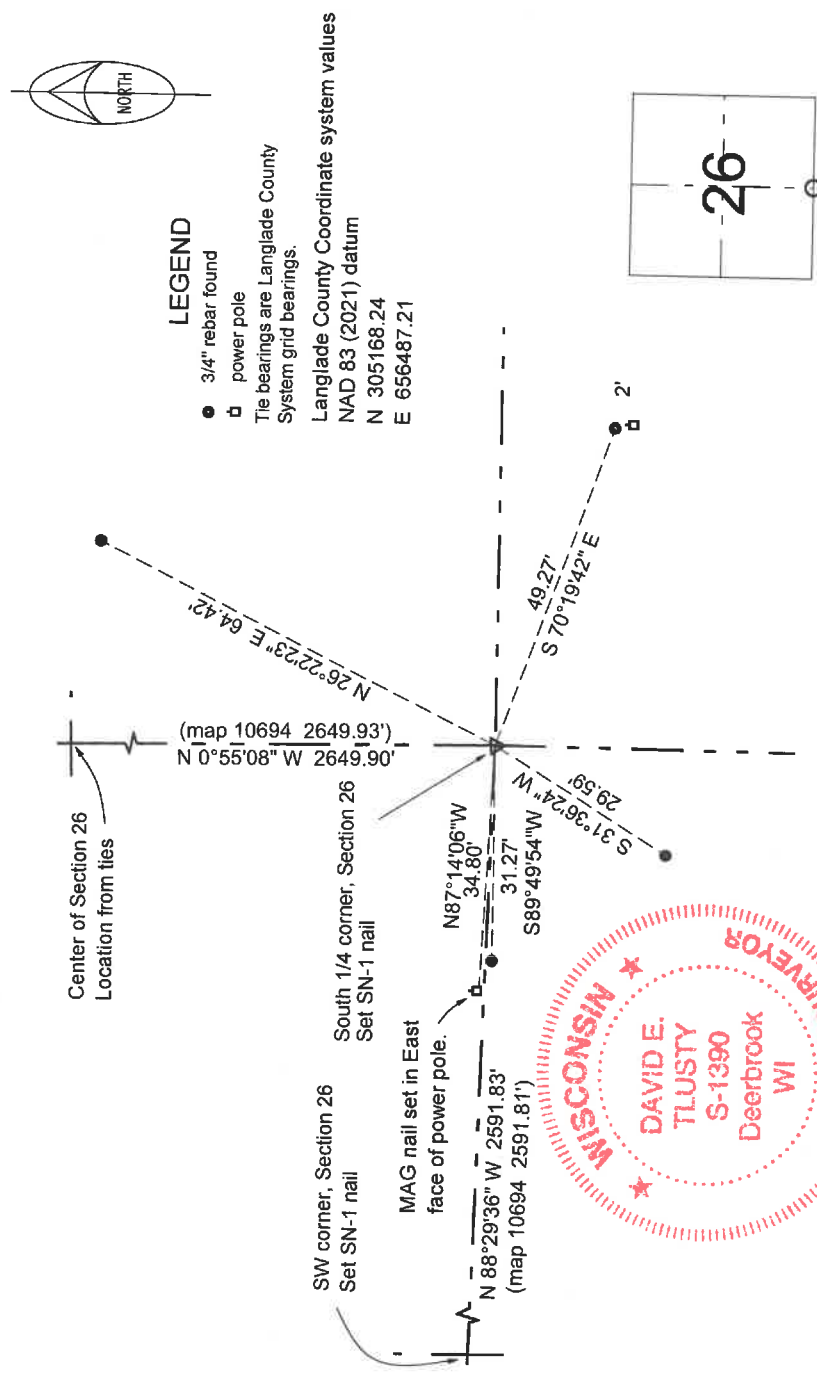
Nov. 1992 Thomas Arnott found no evidence of the corner. He "set R.R. spike off fence line going west and in the centerline of road". He set 4 rebar ties.

May, 2021. D. Tlusty found no marker in the road. The road has apparently been ground off and repaved since 1992. Pulling Arnotts ties don't work better than 0.6 feet. I obtained coordinates from Langlade County for this corner which was GPS observed by myself when I was County Surveyor. I set an SN-1 nail at the position of those coordinates and remeasured Arnotts ties as shown below. This position works very well with information on County map 10694, as shown below, to the SW corner and the Center of Section 26. Tie measurement show were measured with a total station.

Physical description of the monument set:

I set a Berntsen SN-1 "survey marker" nail for the corner.

Describe the accessories used to perpetuate the corner. Include a plan view drawing and accessories found/set. Describe measuring point on bearing trees. Show any topographic features that would aid in future recovery of the corner.



O = corner perpetuated
The South Quarter corner of Section 26, T. 30 N., R. 12 E., Langlade County, WI

David E. Tlusty
6/26/24

I, David E. Tlusty, Wisconsin Professional Land Surveyor S-1390, do hereby certify that the corner location and perpetuation shown on this record was made by me and that this U.S. Public Land Survey Monument Record as required by AE-8 of the Wisconsin Administrative Code is correct to the best of my knowledge and belief.

V19 30-12

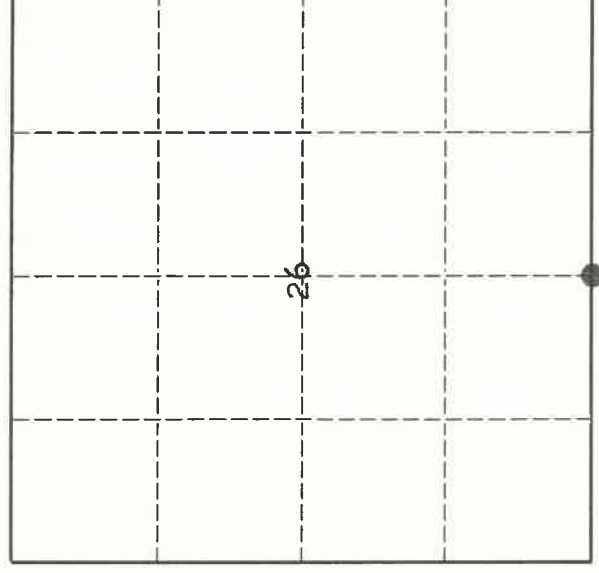
43012260020

U. S. PUBLIC LAND SURVEY MONUMENT RECORD

INSTRUCTIONS:

This record shall show the location of the corner and shall include all of the following nine elements (a through i).

- (a) Identify the corner by reference to the U.S. public land survey system.
- O = Corner monument restored.



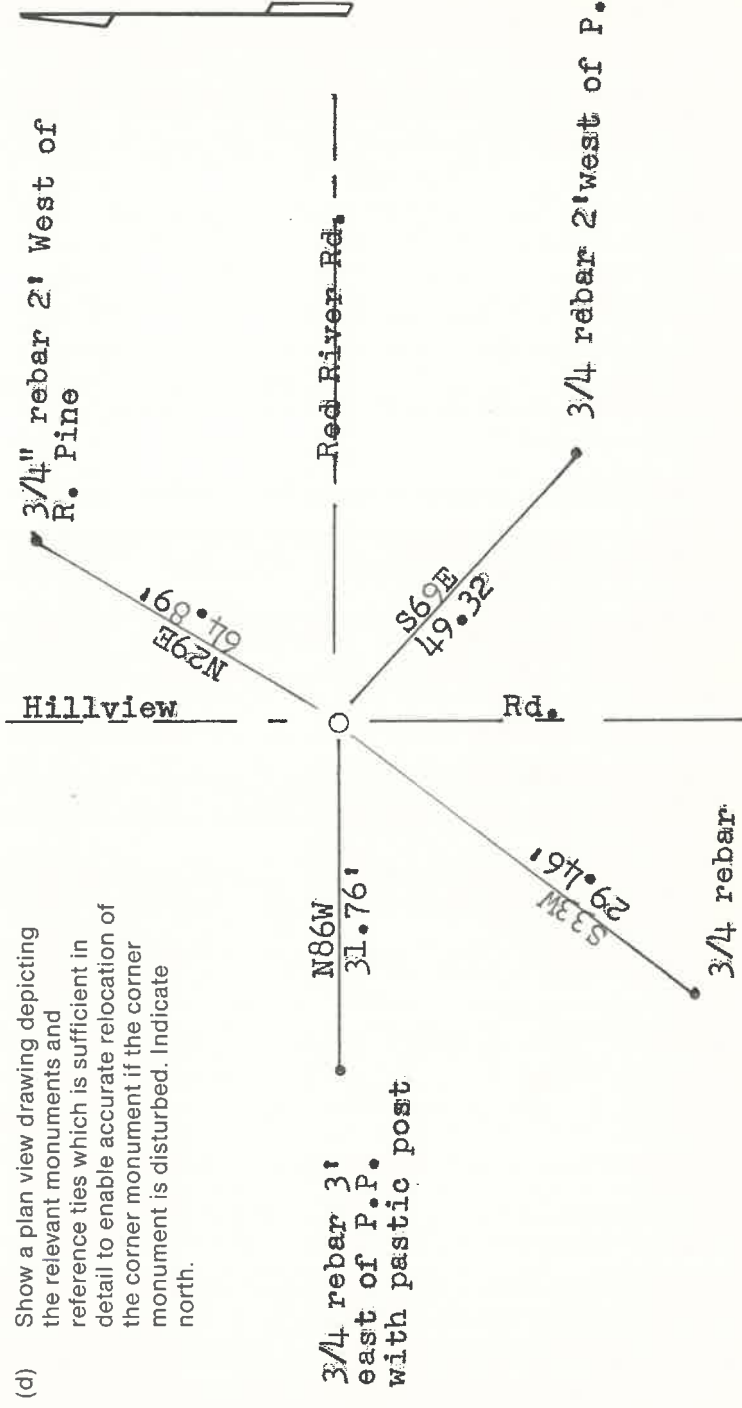
1/4 corner sections 26 and 35

T30N, R12E

- (b) Describe any record evidence, monument evidence, occupational evidence, testimonial evidence or any other material evidence you considered, and whether the monument was found or placed.

Nothing found. Set R.R. spike off fence line going west and in centerline of road.

- (c) In the plan view drawing below, provide reference ties to at least 4 witness monuments, or, if the location is within a municipality, to at least 2 witness monuments. (Witness monuments shall be made of concrete, natural stone, iron or other equally durable material.) Describe witness monuments.



43012260020

Describe any material discrepancy between the location of the corner as restored or reestablished and the location of that corner as previously restored or reestablished by distance and direction. Show the discrepancy on the plan view drawing under (d), above. Show the distances between the corner as previously restored or reestablished and (1) the corner as restored or reestablished, and (2) to at least 2 of the witness monuments shown on the drawing in (d), above.

N/A

(f) Was the corner restored through acceptance of (1) an obliterated evidence location, or, (2) a found perpetuated location. ?

No. 1

(g & h) Was the corner reestablished through lost corner proportionate methods? If so, show the method, including the directions and distances to other public land survey corners used as evidence or used for proportioning in determining the corner location.

No

(i) I, Thomas Arnott S-887
(type or print name)

certify that the corner location shown on this record was determined by me or under my direction and control and that this U.S. Public Land Survey Monument Record is correct and complete to the best of my knowledge and belief.



Signature

9 Nov 1997

Date

